

À des fins de recherche uniquement

Anticorps Polyclonal de lapin anti-DAAM1



Numéro de catalogue: 14876-1-AP

Phare

19 Publications

Informations de base

Numéro de catalogue:

14876-1-AP

Taille:

150ul, Concentration: 450 µg/ml by Nanodrop and 253 µg/ml by Bradford method using BSA as the standard;

Hôte:

Lapin

Isotype:

IgG

Immunogen Catalog Number:

AG6648

Numéro d'acquisition GenBank:

BC064999

Identification du gène (NCBI):

23002

Nom complet:

dishevelled associated activator of morphogenesis 1

MW calculé

123 kDa

MW observés:

123 kDa

Méthode de purification:

Purification par affinité contre l'antigène

Dilutions recommandées:

WB 1:1000-1:4000

IP 0.5-4.0 ug for IP and 1:500-1:1000 for WB

IHC 1:20-1:200

IF 1:20-1:200

Applications

Applications testées:

IF, IHC, IP, WB, ELISA

Demandes citées:

CoIP, IF, IHC, WB

Spécificité de l'espèce:

Humain, rat, souris

Espèces citées:

canin, Humain, souris, xénope

Remarque-IHC: il est suggéré de démasquer l'antigène avec un tampon de TE buffer pH 9,0; (*) A défaut, 'le démasquage de l'antigène peut être 'effectué avec un tampon citrate pH 6,0.

Contrôles positifs:

WB : tissu cérébral de souris, cellules HepG2, tissu cardiaque de souris, tissu cardiaque humain, tissu hépatique de souris

IP : tissu hépatique de souris,

IHC : tissu cérébral humain,

IF : cellules HepG2,

Informations générales

Dishevelled-associated activator of morphogenesis 1 (Daam1) is a member of the formin protein family that is implicated in actin assembly. Daam1 also plays a critical role in mediating Wnt/Fz signaling pathway and regulates cell polarity during development and tissue homeostasis. This antibody well recognizes the endogenous DAAM1 protein around 120 kDa.

Publications notables

| Autrice | Pubmed ID | Journal | Application |
|------------------|-----------|---------------------------|-------------|
| Qin Ju He | 31618077 | Am J Physiol Cell Physiol | WB |
| Tamako Nishimura | 27807130 | J Cell Biol | WB,IF |
| Jie Mei | 31757662 | Pathol Res Pract | WB,IHC |

Stockage

Stockage:

Stocker à -20°C. Stable pendant un an après l'expédition.

Tampon de stockage:

PBS avec azoture de sodium à 0,02 % et glycérol à 50 % pH 7,3

L'aliquotage n'est pas nécessaire pour le stockage à -20C

***** Les 20ul contiennent 0,1% de BSA.**

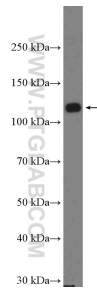
For technical support and original validation data for this product please contact:

T: 1 (888) 4PTGLAB (1-888-478-4522) (toll free in USA), or 1(312) 455-8498 (outside USA)

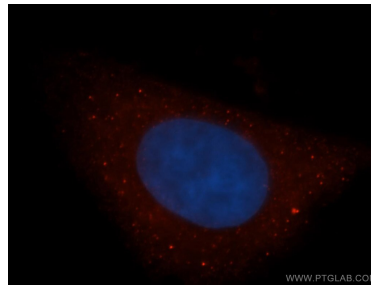
E: proteintech@ptglab.com
W: ptglab.com

This product is exclusively available under Proteintech Group brand and is not available to purchase from any other manufacturer.

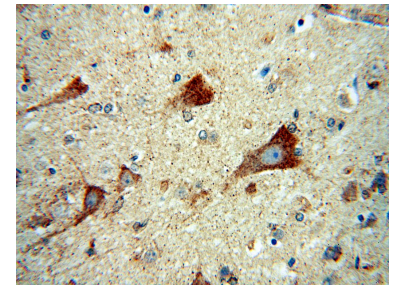
Données de validation sélectionnées



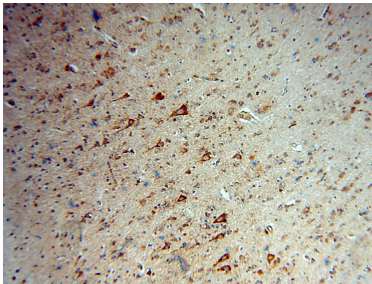
mouse brain tissue were subjected to SDS PAGE followed by western blot with 14876-1-AP (DAAM1 Antibody) at dilution of 1:2000 incubated at room temperature for 1.5 hours.



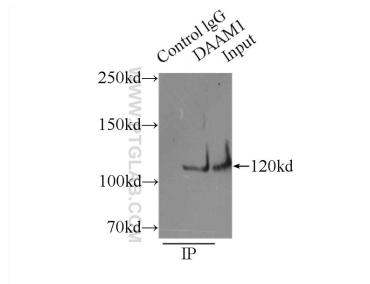
Immunofluorescent analysis of HepG2 cells, using DAAM1 antibody 14876-1-AP at 1:50 dilution and Rhodamine-labeled goat anti-rabbit IgG (red). Blue pseudocolor = DAPI (fluorescent DNA dye).



Immunohistochemical analysis of paraffin-embedded human brain using 14876-1-AP (DAAM1 antibody) at dilution of 1:100 (under 40x lens).



Immunohistochemical analysis of paraffin-embedded human brain using 14876-1-AP (DAAM1 antibody) at dilution of 1:100 (under 10x lens).



IP Result of anti-DAAM1 (IP:14876-1-AP, 3ug; Detection:14876-1-AP 1:500) with mouse liver tissue lysate 8000ug.