

À des fins de recherche uniquement

Anticorps Polyclonal de lapin anti-GOT1



Numéro de catalogue: 14886-1-AP

Phare

29 Publications

Informations de base

Numéro de catalogue:

14886-1-AP

Taille:

150ul, Concentration: 487 µg/ml by Bradford method using BSA as the standard;

Hôte:

Lapin

Isotype:

IgG

Immunogen Catalog Number:

AG6671

Numéro d'acquisition GenBank:

BC000498

Identification du gène (NCBI):

2805

Nom complet:

glutamic-oxaloacetic transaminase 1, soluble (aspartate aminotransferase 1)

MW calculé

46 kDa

MW observés:

43-46 kDa

Méthode de purification:

Purification par affinité contre l'antigène

Dilutions recommandées:

WB 1:500-1:2000

IP 0.5-4.0 ug for IP and 1:500-1:2000 for WB

IF 1:50-1:500

Applications

Applications testées:

IF, IP, WB, ELISA

Demandes citées:

WB

Spécificité de l'espèce:

Humain, rat, souris

Espèces citées:

Humain, rat, souris

Contrôles positifs:

WB : cellules HepG2, cellules L02, cerveau de rat, cerveau de souris

IP : tissu cérébral de souris,

IF : cellules L02,

Informations générales

Glutamate oxaloacetate transaminase 1 (GOT1) catalyzes the reversible reaction of L-aspartate and alpha-ketoglutarate into oxaloacetate and L-glutamate and plays a key role in carbon and nitrogen metabolism. GOT1 can potentially control the intracellular levels of reactive oxygen species (ROS) through NADPH synthesis and enhances tumor growth. GOT1 expression correlates with the growth of several tumors.

Publications notables

Autrice	Pubmed ID	Journal	Application
Florinda Meléndez-Rodríguez	30811976	Cell Rep	WB
Liping Yu	36272463	Biochim Biophys Acta Bioenerg	WB
Weiwei Dai	36256480	J Clin Invest	WB

Stockage

Stockage:

Stocker à -20°C. Stable pendant un an après l'expédition.

Tampon de stockage:

PBS avec azoture de sodium à 0,02 % et glycérol à 50 % pH 7,3

L'aliquotage n'est pas nécessaire pour le stockage à -20°C

*** Les 20ul contiennent 0,1% de BSA.

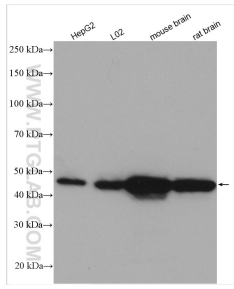
For technical support and original validation data for this product please contact:

T: 1 (888) 4PTGLAB (1-888-478-4522) (toll free in USA), or 1(312) 455-8498 (outside USA)

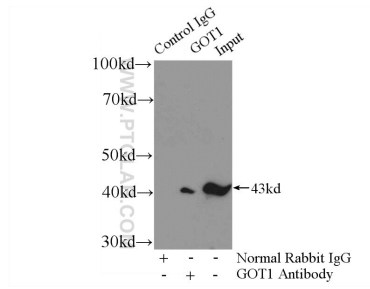
E: proteintech@ptglab.com
W: ptglab.com

This product is exclusively available under Proteintech Group brand and is not available to purchase from any other manufacturer.

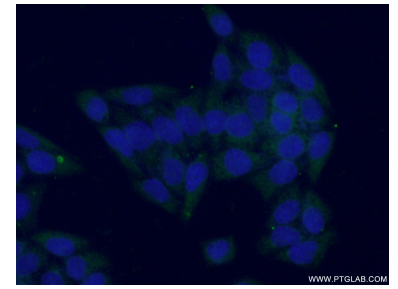
Données de validation sélectionnées



Various lysates were subjected to SDS PAGE followed by western blot with 14886-1-AP (GOT1 antibody) at dilution of 1:1000 incubated at room temperature for 1.5 hours.



IP Result of anti-GOT1 (IP:14886-1-AP, 4ug; Detection:14886-1-AP 1:1000) with mouse brain tissue lysate 4000ug.



Immunofluorescent analysis of (-20°C Ethanol) fixed L02 cells using 14886-1-AP (GOT1 antibody) at dilution of 1:50 and Alexa Fluor 488-conjugated AffiniPure Goat Anti-Rabbit IgG(H+L).