

À des fins de recherche uniquement

Anticorps Polyclonal de lapin anti-GRP75



Numéro de catalogue: 14887-1-AP

Phare

30 Publications

Informations de base

Numéro de catalogue: 14887-1-AP	Numéro d'acquisition GenBank: BC000478	Méthode de purification: Purification par affinité contre l'antigène
Taille: 150ul, Concentration: 400 µg/ml by Nanodrop;	Identification du gène (NCBI): 3313	Dilutions recommandées: WB 1:5000-1:50000
Hôte: Lapin	Nom complet: heat shock 70kDa protein 9 (mortalin)	IP 0.5-4.0 ug for IP and 1:1000-1:4000 for WB
Isotype: IgG	MW calculé: 74 kDa	IHC 1:1000-1:4000
Immunogen Catalog Number: AG6673	MW observés: 74-75 kDa	IF 1:200-1:800

Applications

Applications testées:
FC, IF, IHC, IP, WB, ELISA

Demandes citées:
IF, IP, WB

Spécificité de l'espèce:
Humain, rat, souris

Espèces citées:
Humain, rat, souris

Contrôles positifs:

WB : cellules HT-29, cellules A549, cellules Jurkat, cellules NIH/3T3, foie de souris, tissu testiculaire de souris

IP : tissu cérébral de souris, cellules NIH/3T3

IHC : tissu de cancer du sein humain,

IF : cellules HepG2,

Remarque-IHC: il est suggéré de démasquer l'antigène avec un tampon de TE buffer pH 9,0; (*) À défaut, le démasquage de l'antigène peut être effectué avec un tampon citrate pH 6,0.

Informations générales

GRP75 (also known as mortalin, HSPA9 or mt-Hsp70) is a constitutively expressed member of the HSPA (HSP70) family of heat-shock proteins. It is located in the mitochondrial matrix and anti-GRP75 is commonly used as the marker for mitochondria. It has been reported that GRP75 is enriched in cancer cells and contributes to carcinogenesis. In addition, decreased expression level of GRP75 has been found in neurodegenerative disorders like Parkinson's disease. This antibody recognized the endogenous GRP75 protein in NIH/3T3 cells. (PMID: 21640711, 22920904)

Publications notables

Autrice	Pubmed ID	Journal	Application
Olga Zurita Rendón	30061372	Mol Cell Biol	
Chih-Hao Wang	36158195	Front Cell Dev Biol	WB,IP
Jing Feng	29375708	Oncol Lett	WB,IF

Stockage

Stockage:

Stocker à -20°C. Stable pendant un an après l'expédition.

Tampon de stockage:

PBS avec azoture de sodium à 0,02 % et glycérol à 50 % pH 7,3

L'aliquotage n'est pas nécessaire pour le stockage à -20C

*** Les 20ul contiennent 0,1% de BSA.

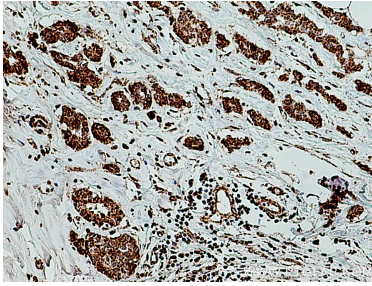
For technical support and original validation data for this product please contact:

T: 1 (888) 4PTGLAB (1-888-478-4522) (toll free in USA), or 1(312) 455-8498 (outside USA)

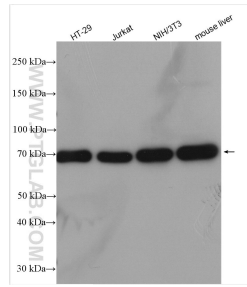
E: proteintech@ptglab.com
W: ptglab.com

This product is exclusively available under Proteintech Group brand and is not available to purchase from any other manufacturer.

Données de validation sélectionnées



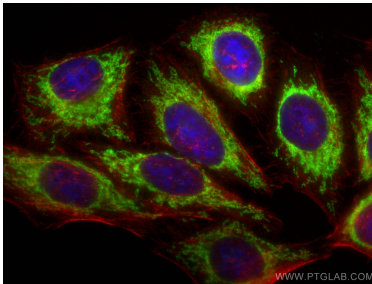
Immunohistochemical analysis of paraffin-embedded human breast cancer tissue slide using 14887-1-AP (GRP75 antibody) at dilution of 1:2000 (under 10x lens). Heat mediated antigen retrieval with Tris-EDTA buffer (pH 9.0).



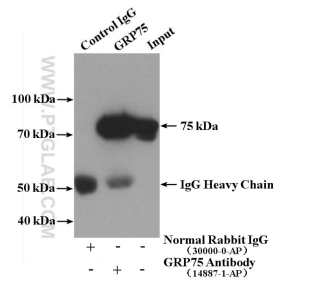
Various lysates were subjected to SDS PAGE followed by western blot with 14887-1-AP (GRP75 antibody) at dilution of 1:20000 incubated at room temperature for 1.5 hours.



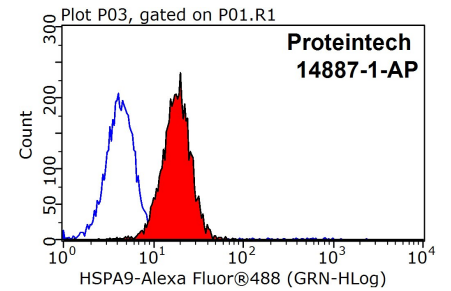
A549 cells (shcontrol and shRNA of GRP75) were subjected to SDS PAGE followed by western blot with 14887-1-AP (GRP75 antibody) at dilution of 1:500.



Immunofluorescent analysis of (-20°C Ethanol) fixed HepG2 cells using GRP75 antibody (14887-1-AP) at dilution of 1:400 and CoraLite@488-Conjugated AffiniPure Goat Anti-Rabbit IgG(H+L), CL594-Phalloidin (red).



IP Result of anti-GRP75 (IP:14887-1-AP, 4ug; Detection:14887-1-AP 1:2000) with mouse brain tissue lysate 3680ug.



1X10⁶ HepG2 cells were stained with 0.2ug GRP75 antibody (14887-1-AP, red) and control antibody (blue). Fixed with 90% MeOH blocked with 3% BSA (30 min). Alexa Fluor 488-conjugated AffiniPure Goat Anti-Rabbit IgG(H+L) with dilution 1:1500.