

À des fins de recherche uniquement

Anticorps Polyclonal de lapin anti-PSMD4



Numéro de catalogue: 14899-1-AP

Phare

13 Publications

Informations de base

Numéro de catalogue: 14899-1-AP	Numéro d'acquisition GenBank: BC002365	Méthode de purification: Purification par affinité contre l'antigène
Taille: 150ul , Concentration: 500 µg/ml by Nanodrop;	Identification du gène (NCBI): 5710	Dilutions recommandées: WB 1:2000-1:12000 IHC 1:50-1:500 IF 1:20-1:200
Hôte: Lapin	Nom complet: proteasome (prosome, macropain) 26S subunit, non-ATPase, 4	
Isotype: IgG	MW calculé 41 kDa	
Immunogen Catalog Number: AG6691	MW observés: 50 kDa	

Applications

Applications testées:
FC, IF, IHC, WB, ELISA

Demandes citées:
IF, IHC, WB

Spécificité de l'espèce:
Humain, rat, souris

Espèces citées:
Humain, souris

Contrôles positifs:

WB : cellules Jurkat, cellules HeLa, cellules K-562, cellules NIH/3T3, cellules Raji, cellules RAW 264.7, tissu splénique de rat

IHC : tissu de cancer du poumon humain, tissu testiculaire humain

IF : cellules HepG2,

Remarque-IHC: il est suggéré de démasquer l'antigène avec un tampon de TE buffer pH 9,0; (*) À défaut, le démasquage de l'antigène peut être effectué avec un tampon citrate pH 6,0.

Informations générales

PSMD4, also named as MCB1, AF or ASF, belongs to the proteasome subunit 55A family. PSMD4 is a 50-kD subunit of the regulatory complex of the 26S proteasome. It binds and presumably selects ubiquitin-conjugates for destruction. PSMD4 displays selectivity for longer polyubiquitin chains. It modulates intestinal fluid secretion. PSMD4 is exposed on the sperm acrosomal surface, a notion that was further supported by the binding of non-cell permeant, biotinylated proteasomal inhibitor ZL3V5 to the sperm acrosome. It is involved in the sperm-ZP penetration during fertilization. (PMID: 20526895) This antibody is specific to PSMD4.

Publications notables

Autrice	Pubmed ID	Journal	Application
Monica Benvenuto	34561494	Sci Rep	IHC
Rossella Avagliano Trezza	31235931	Nat Neurosci	WB, IF
Alison Sparks	35735670	FEBS Lett	WB

Stockage

Stockage:

Stocker à -20°C. Stable pendant un an après l'expédition.

Tampon de stockage:

PBS avec azoture de sodium à 0,02 % et glycérol à 50 % pH 7,3

L'aliquotage n'est pas nécessaire pour le stockage à -20C

***** Les 20ul contiennent 0,1% de BSA.**

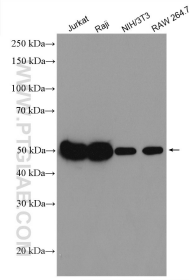
For technical support and original validation data for this product please contact:

T: 1 (888) 4PTGLAB (1-888-478-4522) (toll free in USA), or 1(312) 455-8498 (outside USA)

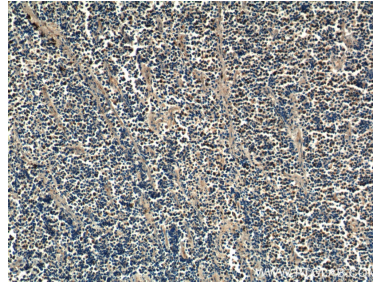
E: proteintech@ptglab.com
W: ptglab.com

This product is exclusively available under Proteintech Group brand and is not available to purchase from any other manufacturer.

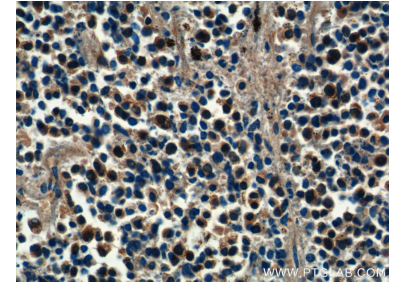
Données de validation sélectionnées



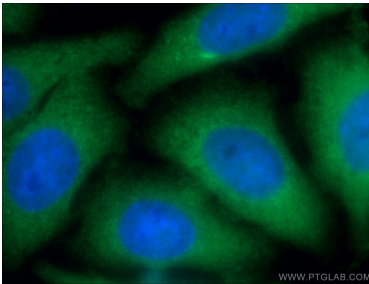
Various lysates were subjected to SDS PAGE followed by western blot with 14899-1-AP (PSMD4 antibody) at dilution of 1:6000 incubated at room temperature for 1.5 hours.



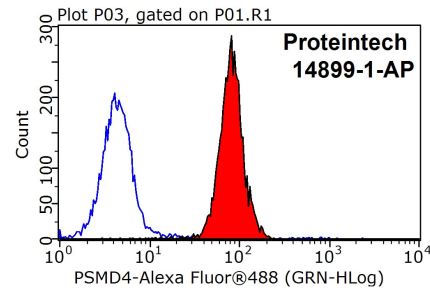
Immunohistochemical analysis of paraffin-embedded human lung cancer tissue slide using 14899-1-AP (PSMD4 Antibody) at dilution of 1:200 (under 10x lens).



Immunohistochemical analysis of paraffin-embedded human lung cancer tissue slide using 14899-1-AP (PSMD4 Antibody) at dilution of 1:200 (under 40x lens).



Immunofluorescent analysis of (-20°C Ethanol) fixed HepG2 cells using 14899-1-AP (PSMD4 antibody) at dilution of 1:50 and Alexa Fluor 488-conjugated AffiniPure Goat Anti-Rabbit IgG(H+L).



1x10⁶ HepG2 cells were stained with 0.2ug PSMD4 antibody (14899-1-AP, red) and control antibody (blue). Fixed with 90% MeOH blocked with 3% BSA (30 min). Alexa Fluor 488-conjugated AffiniPure Goat Anti-Rabbit IgG(H+L) with dilution 1:1500.