

À des fins de recherche uniquement

Anticorps Polyclonal de lapin anti-HKR1



Numéro de catalogue: 14902-1-AP

Informations de base

Numéro de catalogue: 14902-1-AP	Numéro d'acquisition GenBank: BC053845	Méthode de purification: Purification par affinité contre l'antigène
Taille: 150ul , Concentration: 500 µg/ml by Nanodrop and 333 µg/ml by Bradford method using BSA as the standard;	Identification du gène (NCBI): 284459	Dilutions recommandées: WB 1:200-1:1000
Hôte: Lapin	Nom complet: GLI-Kruppel family member HKR1	
Isotype: IgG	MW calculé: 73 kDa, 75 kDa	
Immunogen Catalog Number: AG6694	MW observés: 70-75 kDa	

Applications

Applications testées: WB, ELISA	Contrôles positifs: WB : cellules COLO 320, cellules HEK-293, cellules HeLa
Spécificité de l'espèce: Humain	

Informations générales

HKR1, also named as ZNF875, belongs to the krueppel C2H2-type zinc-finger protein family. HRK1 is a modular protein that comprises a photosensory rhodopsin, a histidine kinase, a response regulator and a putative guanylyl cyclase domain. HKR1 is related to the protonation state of the Schiff base function that provides the linkage of the retinal chromophore with a Lys side chain of the protein (PMID: 25836735). HRK1 has 2 isoforms with the molecular mass of 73-75 kDa.

Stockage

Stockage:
Stocker à -20°C. Stable pendant un an après l'expédition.
Tampon de stockage:
PBS avec azoture de sodium à 0,02 % et glycérol à 50 % pH 7,3
L'aliquotage n'est pas nécessaire pour le stockage à -20C

*** Les 20ul contiennent 0,1% de BSA.

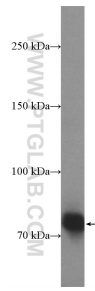
For technical support and original validation data for this product please contact:

T: 1 (888) 4PTGLAB (1-888-478-4522) (toll free in USA), or 1(312) 455-8498 (outside USA)

E: proteintech@ptglab.com
W: ptglab.com

This product is exclusively available under Proteintech Group brand and is not available to purchase from any other manufacturer.

Données de validation sélectionnées



COLO 320 cells were subjected to SDS PAGE followed by western blot with 14902-1-AP (HKR1 Antibody) at dilution of 1:300 incubated at 4 degree celsius over night.