

À des fins de recherche uniquement

Anticorps Polyclonal de lapin anti-RPS26



Numéro de catalogue: 14909-1-AP

Phare

9 Publications

Informations de base

Numéro de catalogue:

14909-1-AP

Taille:

150ul, Concentration: 300 µg/ml by Nanodrop and 153 µg/ml by Bradford method using BSA as the standard;

Hôte:

Lapin

Isotype:

IgG

Immunogen Catalog Number:

AG6706

Numéro d'acquisition GenBank:

BC002604

Identification du gène (NCBI):

6231

Nom complet:

ribosomal protein S26

MW calculé

13 kDa

MW observés:

18-21 kDa

Méthode de purification:

Purification par affinité contre l'antigène

Dilutions recommandées:

WB 1:500-1:2000

IP 0.5-4.0 ug for IP and 1:500-1:1000 for WB

IHC 1:20-1:200

IF 1:20-1:200

Applications

Applications testées:

IF, IHC, IP, WB, ELISA

Demandes citées:

IHC, IP, PLA, WB

Spécificité de l'espèce:

Humain, rat, souris

Espèces citées:

Humain, souris

Remarque-IHC: il est suggéré de démasquer l'antigène avec un tampon de TE buffer pH 9,0; (*) A défaut, 'le démasquage de l'antigène peut être effectué avec un tampon citrate pH 6,0.

Contrôles positifs:

WB : tissu ovarien de souris, tissu pulmonaire de souris

IP : tissu pulmonaire de souris,

IHC : tissu de cancer du sein humain, tissu rénal humain

IF : cellules MCF-7,

Informations générales

Diamond-Blackfan anemia (DBA) is a congenital red cell aplasia that is usually diagnosed during early infancy, and strikingly, in addition to defects in red cell maturation the disorder is associated with various physical anomalies in about 40% of patients. To date, heterozygous mutations in nine RP genes have been conclusively associated with DBA, and RPS26 is one of them. There are nine mutation found in RPS26 from DBA patients.

Publications notables

Autrice	Pubmed ID	Journal	Application
Max Koppers	31746735	Elife	WB, PLA
Xiao-Man Liu	30451825	Cell Death Dis	WB
Yanqin Yu	28232668	Nat Commun	

Stockage

Stockage:

Stocker à -20°C. Stable pendant un an après l'expédition.

Tampon de stockage:

PBS avec azoture de sodium à 0,02 % et glycérol à 50 % pH 7,3

L'aliquotage n'est pas nécessaire pour le stockage à -20C

*** Les 20ul contiennent 0,1% de BSA.

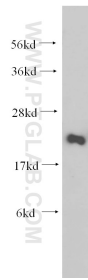
For technical support and original validation data for this product please contact:

T: 1 (888) 4PTGLAB (1-888-478-4522) (toll free in USA), or 1(312) 455-8498 (outside USA)

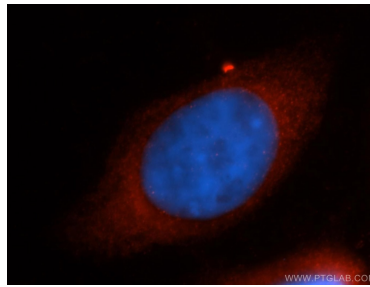
E: proteintech@ptglab.com
W: ptglab.com

This product is exclusively available under Proteintech Group brand and is not available to purchase from any other manufacturer.

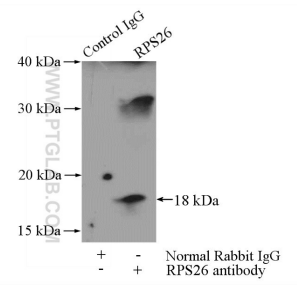
Données de validation sélectionnées



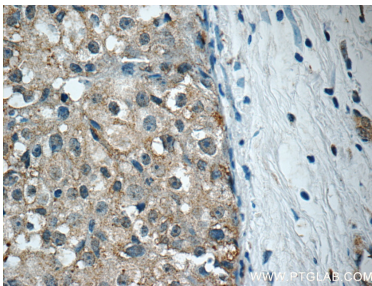
mouse ovary tissue were subjected to SDS PAGE followed by western blot with 14909-1-AP (RPS26 antibody) at dilution of 1:200 incubated at room temperature for 1.5 hours.



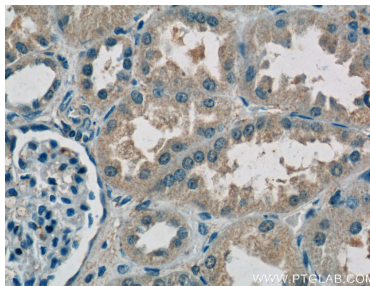
Immunofluorescent analysis of MCF-7 cells, using RPS26 antibody 14909-1-AP at 1:50 dilution and Rhodamine-labeled goat anti-rabbit IgG (red). Blue pseudocolor = DAPI (fluorescent DNA dye).



IP Result of anti-RPS26 (IP:14909-1-AP, 4ug; Detection:14909-1-AP 1:500) with mouse lung tissue lysate 4000ug.



Immunohistochemical analysis of paraffin-embedded human breast cancer tissue slide using 14909-1-AP (RPS26 Antibody) at dilution of 1:50 (under 40x lens).



Immunohistochemical analysis of paraffin-embedded human kidney tissue slide using 14909-1-AP (RPS26 Antibody) at dilution of 1:50 (under 40x lens).