

À des fins de recherche uniquement

# Anticorps Polyclonal de lapin anti-HN1



Numéro de catalogue: 14914-1-AP

Phare

2 Publications

## Informations de base

Numéro de catalogue:

14914-1-AP

Taille:

150ul, Concentration: 600 µg/ml by Nanodrop and 433 µg/ml by Bradford method using BSA as the standard;

Hôte:

Lapin

Isotype:

IgG

Immunogen Catalog Number:

AG6712

Numéro d'acquisition GenBank:

BC001420

Identification du gène (NCBI):

51155

Nom complet:

hematological and neurological expressed 1

MW calculé

11 kDa, 16 kDa, 19 kDa

MW observés:

23-30 kDa

Méthode de purification:

Purification par affinité contre l'antigène

Dilutions recommandées:

WB 1:500-1:1000

IP 0.5-4.0 ug for IP and 1:500-1:2000 for WB

IHC 1:50-1:500

## Applications

Applications testées:

IHC, IP, WB, ELISA

Demandes citées:

ColP, IHC, WB

Spécificité de l'espèce:

Humain, rat, souris

Espèces citées:

Humain

**Remarque-IHC: il est suggéré de démasquer l'antigène avec un tampon de TE buffer pH 9,0; (\*) A défaut, 'le démasquage de l'antigène peut être 'effectué avec un tampon citrate pH 6,0.**

Contrôles positifs:

WB : cellules HeLa, cellules A431, cellules HepG2, cellules LNCaP, tissu cérébral humain, tissu de côlon de souris, tissu testiculaire de souris, tissu testiculaire humain

IP : cellules MCF-7,

IHC : tissu de tumeur ovarienne humain, tissu de cancer du sein humain

## Informations générales

HN1 (hematopoietic- and neurologic-expressed sequence 1) is a highly conserved protein that is expressed in developing and regenerating tissues. Overexpression of HN1 has been reported in various tumors like glioma and breast cancer. Hn1 has also been reported as a marker for human ovarian carcinoma and can distinguish epithelial ovarian carcinoma cells from normal ovarian surface epithelial cells. This collective information suggests that HN1 is involved in processes associated with cell proliferation, repair and/or growth.

## Publications notables

Autrice	Pubmed ID	Journal	Application
Jia-Jie Chen	31749294	Kaohsiung J Med Sci	WB, IHC
Zongfu Pan	33359451	Cancer Lett	WB, ColP

## Stockage

Stockage:

Stocker à -20°C. Stable pendant un an après l'expédition.

Tampon de stockage:

PBS avec azoture de sodium à 0,02 % et glycérol à 50 % pH 7,3

L'aliquotage n'est pas nécessaire pour le stockage à -20C

\*\*\* Les 20ul contiennent 0,1% de BSA.

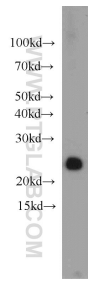
For technical support and original validation data for this product please contact:

T: 1 (888) 4PTGLAB (1-888-478-4522) (toll free in USA), or 1(312) 455-8498 (outside USA)

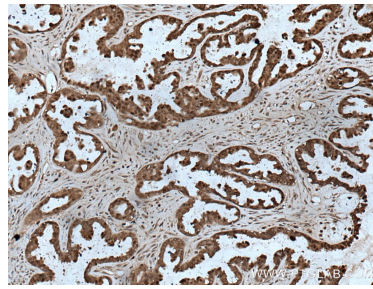
E: proteintech@ptglab.com  
W: ptglab.com

This product is exclusively available under Proteintech Group brand and is not available to purchase from any other manufacturer.

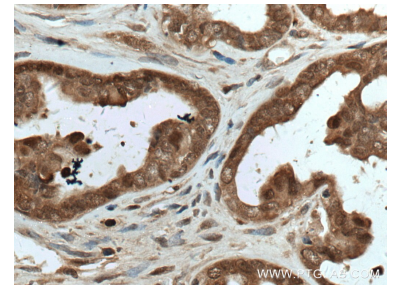
## Données de validation sélectionnées



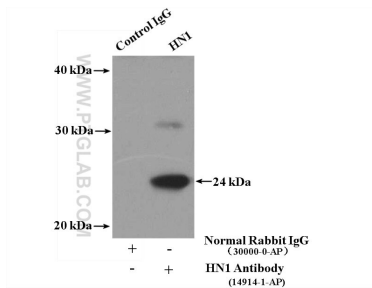
HeLa cells were subjected to SDS PAGE followed by western blot with 14914-1-AP (HN1 antibody) at dilution of 1:1000 incubated at room temperature for 1.5 hours.



Immunohistochemical analysis of paraffin-embedded human ovary tumor tissue slide using 14914-1-AP (HN1 antibody) at dilution of 1:200 (under 10x lens. Heat mediated antigen retrieval with Tris-EDTA buffer (pH 9.0).



Immunohistochemical analysis of paraffin-embedded human ovary tumor tissue slide using 14914-1-AP (HN1 antibody) at dilution of 1:200 (under 40x lens. Heat mediated antigen retrieval with Tris-EDTA buffer (pH 9.0).



IP Result of anti-HN1 (IP:14914-1-AP, 4ug; Detection:14914-1-AP 1:1000) with MCF-7 cells lysate 3200ug.