

À des fins de recherche uniquement

# Anticorps Polyclonal de lapin anti-TOB1



Numéro de catalogue: 14915-1-AP

8 Publications

## Informations de base

Numéro de catalogue:  
14915-1-AP

Taille:  
150ul, Concentration: 600 µg/ml by Nanodrop and 367 µg/ml by Bradford method using BSA as the standard;

Hôte:  
Lapin

Isotype:  
IgG

Immunogen Catalog Number:  
AG6714

Numéro d'acquisition GenBank:  
BC031406

Identification du gène (NCBI):  
10140

Nom complet:  
transducer of ERBB2, 1

MW calculé  
38 kDa

MW observés:  
38-45 kDa

Méthode de purification:  
Purification par affinité contre l'antigène

Dilutions recommandées:  
WB 1:500-1:1000  
IP 0.5-4.0 ug for IP and 1:500-1:2000 for WB  
IHC 1:50-1:500  
IF 1:10-1:100

## Applications

Applications testées:  
IF, IHC, IP, WB, ELISA

Demandes citées:  
IF, IHC, IP, WB

Spécificité de l'espèce:  
Humain, rat, souris

Espèces citées:  
Humain, souris

**Remarque-IHC: il est suggéré de démasquer l'antigène avec un tampon de TE buffer pH 9,0; (\*) A défaut, 'le démasquage de l'antigène peut être 'effectué avec un tampon citrate pH 6,0.**

Contrôles positifs:

WB : cellules HeLa,

IP : cellules HeLa,

IHC : tissu de cancer de l'estomac humain,

IF : cellules HeLa,

## Informations générales

TOB1, also known as APRO6 or TROB1, is a member of the transducer of erbB-2/B-cell translocation gene protein family. Members of this family are anti-proliferative factors that have the potential to regulate cell growth. The TOB1 protein has a large additional C-terminal region, which contains PAM2 motifs that mediate interactions with poly(A)-binding proteins. The predicted MW of this protein is 38 kDa. Catalog# 14915-1-AP recognises 38 and 45 kDa band, and the additional 45 kDa band may be due to phosphorylation.

## Publications notables

Autrice	Pubmed ID	Journal	Application
Fabian Poetz	36096941	Genome Biol	WB
Zhongxia Yu	36085336	Commun Biol	WB, IF, IP
Jin Zhu	26540468	Oncotarget	WB

## Stockage

Stockage:

Stocker à -20°C. Stable pendant un an après l'expédition.

Tampon de stockage:

PBS avec azoture de sodium à 0,02 % et glycérol à 50 % pH 7,3

L'aliquotage n'est pas nécessaire pour le stockage à -20C

\*\*\* Les 20ul contiennent 0,1% de BSA.

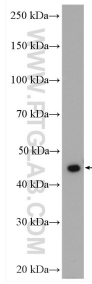
For technical support and original validation data for this product please contact:

T: 1 (888) 4PTGLAB (1-888-478-4522) (toll free in USA), or 1(312) 455-8498 (outside USA)

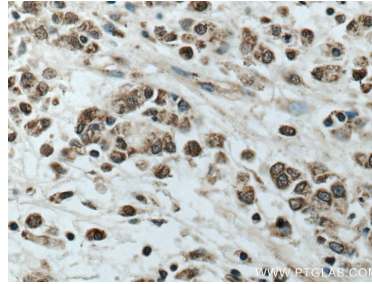
E: proteintech@ptglab.com  
W: ptglab.com

This product is exclusively available under Proteintech Group brand and is not available to purchase from any other manufacturer.

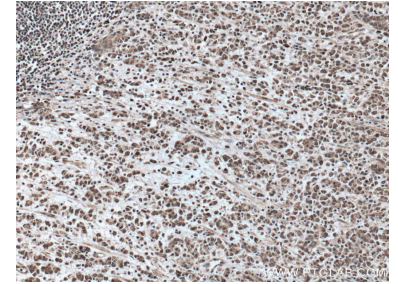
## Données de validation sélectionnées



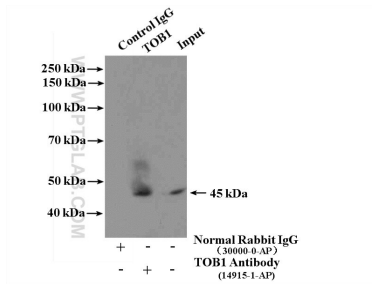
HeLa cells were subjected to SDS PAGE followed by western blot with 14915-1-AP (TOB1 antibody) at dilution of 1:500 incubated at room temperature for 1.5 hours.



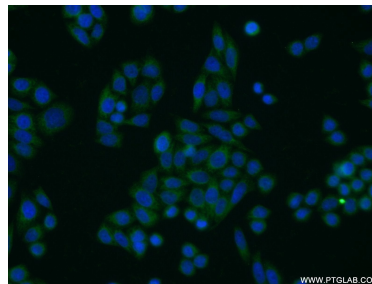
Immunohistochemical analysis of paraffin-embedded human stomach cancer tissue slide using 14915-1-AP (TOB1 antibody) at dilution of 1:100 (under 0x lens. Heat mediated antigen retrieval with Tris-EDTA buffer (pH 9.0).



Immunohistochemical analysis of paraffin-embedded human stomach cancer tissue slide using 14915-1-AP (TOB1 antibody) at dilution of 1:100 (under 0x lens. Heat mediated antigen retrieval with Tris-EDTA buffer (pH 9.0).



IP Result of anti-TOB1 (IP:14915-1-AP, 4ug; Detection:14915-1-AP 1:1000) with HeLa cells lysate 1600ug.



Immunofluorescent analysis of HeLa cells using 14915-1-AP (TOB1 antibody) at dilution of 1:25 and Alexa Fluor 488-conjugated AffiniPure Goat Anti-Rabbit IgG(H+L).