

À des fins de recherche uniquement

Anticorps Polyclonal de lapin anti-LMOD3



Numéro de catalogue: 14948-1-AP

Phare

16 Publications

Informations de base

Numéro de catalogue:
14948-1-AP

Taille:
150ul, Concentration: 700 µg/ml by Nanodrop and 387 µg/ml by Bradford method using BSA as the standard;

Hôte:
Lapin

Isotype:
IgG

Immunogen Catalog Number:
AG6758

Numéro d'acquisition GenBank:
BC039202

Identification du gène (NCBI):
56203

Nom complet:
leiomodrin 3 (fetal)

MW calculé
65 kDa

MW observés:
65-70 kDa

Méthode de purification:
Purification par affinité contre l'antigène

Dilutions recommandées:
WB 1:2000-1:10000
IP 0.5-4.0 ug for IP and 1:500-1:1000 for WB
IHC 1:20-1:200

Applications

Applications testées:
IHC, IP, WB, ELISA

Demandes citées:
IF, IHC, WB

Spécificité de l'espèce:
Humain, rat, souris

Espèces citées:
Humain, poisson-zèbre, souris, xénope

Remarque-IHC: il est suggéré de démasquer l'antigène avec un tampon de TE buffer pH 9.0; (*) A défaut, le démasquage de l'antigène peut être effectué avec un tampon citrate pH 6,0.

Contrôles positifs:

WB : tissu de muscle squelettique de souris, tissu cardiaque de souris, tissu de muscle squelettique de rat

IP : tissu de muscle squelettique de souris,

IHC : tissu cardiaque humain, tissu de muscle squelettique humain

Informations générales

The gene encoding LMOD3 has not been characterized so far and very limited information of its function has been reported. Nanda et al. found that the expression of mouse LMOD3 mRNA is restricted largely to cardiac and skeletal muscle through RT-PCR analysis (PMID: 22157009). Two isoforms of LMOD3 may exist due to the alternative splicing, whose molecular weights are predicted as 65 kDa and 40 kDa, respectively (Uniprot). This antibody was raised against the N-terminal region of human LMOD3. It detects a double bands around 80 kDa and 65 kDa in heart and skeletal muscle lysates. The reason causing the discrepancy between the predicted and observed molecular weight is not clear.

Publications notables

Autrice	Pubmed ID	Journal	Application
Michaela Yuen	25250574	J Clin Invest	WB, IF
Tongbin Wu	29078393	Proc Natl Acad Sci U S A	WB
Christopher T Pappas	26487682	Proc Natl Acad Sci U S A	WB

Stockage

Stockage:

Stocker à -20°C. Stable pendant un an après l'expédition.

Tampon de stockage:

PBS avec azoture de sodium à 0,02 % et glycérol à 50 % pH 7,3

L'aliquoteage n'est pas nécessaire pour le stockage à -20C

*** Les 20ul contiennent 0,1% de BSA.

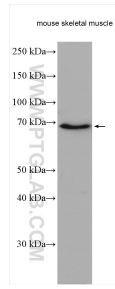
For technical support and original validation data for this product please contact:

T: 1 (888) 4PTGLAB (1-888-478-4522) (toll free in USA), or 1(312) 455-8498 (outside USA)

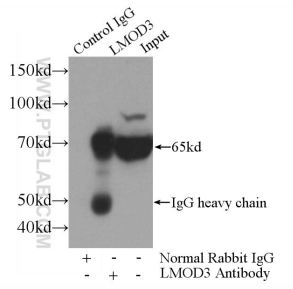
E: proteintech@ptglab.com
W: ptglab.com

This product is exclusively available under Proteintech Group brand and is not available to purchase from any other manufacturer.

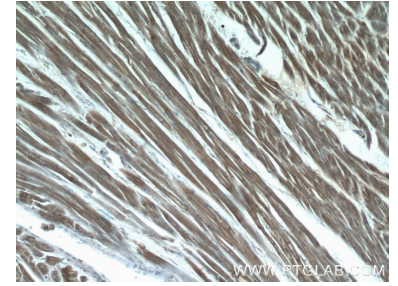
Données de validation sélectionnées



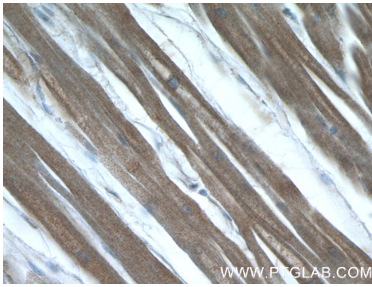
Mouse skeletal muscle lysates were subjected to SDS PAGE followed by western blot with 14948-1-AP (LMOD3 antibody) at dilution of 1:5000 incubated at room temperature for 1.5 hours.



IP Result of anti-LMOD3 (IP:14948-1-AP, 4ug; Detection:14948-1-AP 1:700) with mouse skeletal muscle tissue lysate 3600ug.



Immunohistochemical analysis of paraffin-embedded human heart tissue slide using 14948-1-AP (LMOD3 Antibody) at dilution of 1:50 (under 10x lens).



Immunohistochemical analysis of paraffin-embedded human heart tissue slide using 14948-1-AP (LMOD3 Antibody) at dilution of 1:50 (under 40x lens).