

À des fins de recherche uniquement

Anticorps Polyclonal de lapin anti-IGBP1



Numéro de catalogue: 14952-1-AP **Phare**

Informations de base

Numéro de catalogue:
14952-1-AP

Taille:
150ul, Concentration: 133 µg/ml by
Nanodrop and 133 µg/ml by Bradford
method using BSA as the standard;

Hôte:
Lapin

Isotype:
IgG

Immunogen Catalog Number:
AG6782

Numéro d'acquisition GenBank:
BC004137

Identification du gène (NCBI):
3476

Nom complet:
immunoglobulin (CD79A) binding
protein 1

MW calculé
39 kDa

MW observés:
40-45 kDa

Méthode de purification:
Purification par affinité contre
l'antigène

Dilutions recommandées:
WB 1:500-1:2000
IP 0.5-4.0 ug for IP and 1:200-1:1000
for WB

Applications

Applications testées:
IP, WB, ELISA

Spécificité de l'espèce:
Humain, rat, souris

Contrôles positifs:

WB : cellules Raji, Jurkat

IP : cellules Jurkat,

Informations générales

Immunoglobulin-binding protein 1 (IGBP1), also known as ALPHA-4, was originally identified as a signal transduction molecule coprecipitating with MB1 (CD79a) protein of the B-cell antigen receptor (BCR) complex. IGBP1 has been characterized as an essential regulator of the catalytic activity of protein phosphatase 2A (PP2A), which is a ubiquitous phosphatase with broad substrate specificity and diverse cellular functions.

Stockage

Stockage:

Stocker à -20°C. Stable pendant un an après l'expédition.

Tampon de stockage:

PBS avec azoture de sodium à 0,02 % et glycérol à 50 % pH 7,3

L'aliquotage n'est pas nécessaire pour le stockage à -20C

*** Les 20ul contiennent 0,1% de BSA.

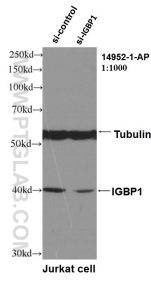
For technical support and original validation data for this product please contact:

T: 1 (888) 4PTGLAB (1-888-478-4522) (toll free
in USA), or 1(312) 455-8498 (outside USA)

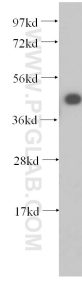
E: proteintech@ptglab.com
W: ptglab.com

This product is exclusively available under Proteintech Group brand and is not available to purchase from any other manufacturer.

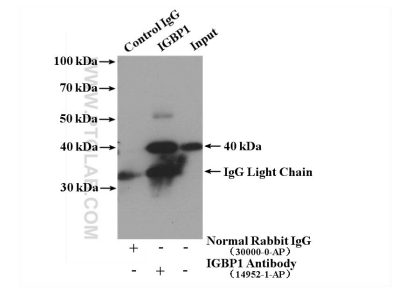
Données de validation sélectionnées



WB result of IGBP1 antibody (14952-1-AP, 1:1000) with si-control and si-IGBP1 transfected Jurkat cells.



Raji cells were subjected to SDS PAGE followed by western blot with 14952-1-AP (IGBP1 antibody) at dilution of 1:400 incubated at room temperature for 1.5 hours.



IP result of anti-IGBP1 (IP:14952-1-AP, 4ug; Detection:14952-1-AP 1:300) with Jurkat cells lysate 4000 ug.