

À des fins de recherche uniquement

Anticorps Polyclonal de lapin anti-Cytokeratin 19



Numéro de catalogue: 14965-1-AP

Phare

10 Publications

Informations de base

Numéro de catalogue:
14965-1-AP

Taille:
150ul, Concentration: 1000 µg/ml by Nanodrop and 427 µg/ml by Bradford method using BSA as the standard;

Hôte:
Lapin

Isotype:
IgG

Immunogen Catalog Number:
AG6830

Numéro d'acquisition GenBank:
BC002539

Identification du gène (NCBI):

Nom complet:
keratin 19

MW calculé
44 kDa

MW observés:
40 kDa, 46 kDa

Méthode de purification:
Purification par affinité contre l'antigène

Dilutions recommandées:
WB 1:500-1:3000
IHC 1:1000-1:6400
IF 1:200-1:800

Applications

Applications testées:
FC, IF, IHC, WB, ELISA

Demandes citées:
IF, IHC, WB

Spécificité de l'espèce:
Humain, rat, souris

Espèces citées:
Humain, rat, singe, souris

Remarque-IHC: il est suggéré de démasquer l'antigène avec un tampon de TE buffer pH 9,0; (*) A défaut, le démasquage de l'antigène peut être effectué avec un tampon citrate pH 6,0.

Contrôles positifs:

WB : cellules MCF7, cellules BxPC-3, cellules HeLa, cellules HepG2

IHC : tissu de côlon humain, tissu de cancer du col de l'utérus humain, tissu de cancer du foie humain, tissu de cancer du poumon humain, tissu de côlon de rat, tissu de côlon de souris

IF : cellules HeLa, cellules A431

Informations générales

Keratins are a large family of proteins that form the intermediate filament cytoskeleton of epithelial cells, which are classified into two major sequence types. Type I keratins are a group of acidic intermediate filament proteins, including K9-K23, and the hair keratins Ha1-Ha8. Type II keratins are the basic or neutral counterparts to the acidic type I keratins, including K1-K8, and the hair keratins, Hb1-Hb6. KRT19, one of type I keratins, is specifically expressed in the periderm, the transiently superficial layer that envelopes the developing epidermis. Due to its high sensitivity, KRT19 is the most used marker for detection of tumor cells disseminated in lymph nodes, peripheral blood, and bone marrow of breast cancer patients. This antibody, generated against full length KRT19 protein, also recognizes KRT17, another type I keratin homologous to KRT19.

Publications notables

Autrice	Pubmed ID	Journal	Application
Masahiko Itoh	33184034	Biochim Biophys Acta Mol Basis Dis	IF
Nachiket Vartak	26610202	Hepatology	IF
Zhiqiang Tian	36403057	Cancer Cell Int	IHC

Stockage

Stockage:

Stocker à -20°C. Stable pendant un an après l'expédition.

Tampon de stockage:

PBS avec azoture de sodium à 0,02 % et glycérol à 50 % pH 7,3

L'aliquotage n'est pas nécessaire pour le stockage à -20C

*** Les 20ul contiennent 0,1% de BSA.

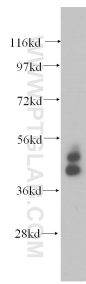
For technical support and original validation data for this product please contact:

T: 1 (888) 4PTGLAB (1-888-478-4522) (toll free in USA), or 1(312) 455-8498 (outside USA)

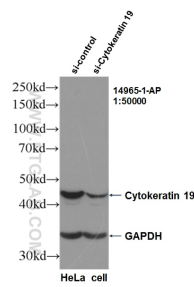
E: proteintech@ptglab.com
W: ptglab.com

This product is exclusively available under Proteintech Group brand and is not available to purchase from any other manufacturer.

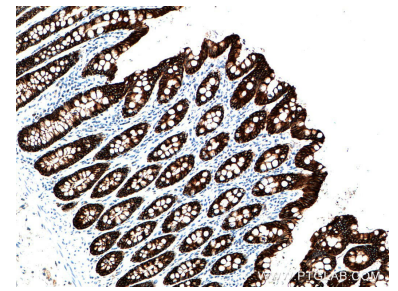
Données de validation sélectionnées



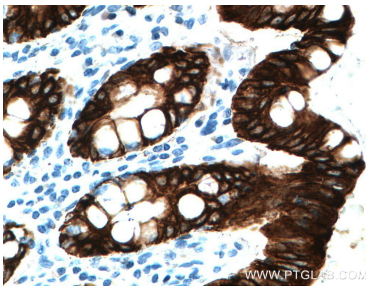
MCF7 cells were subjected to SDS PAGE followed by western blot with 14965-1-AP (Cytokeratin 19 antibody) at dilution of 1:500 incubated at room temperature for 1.5 hours.



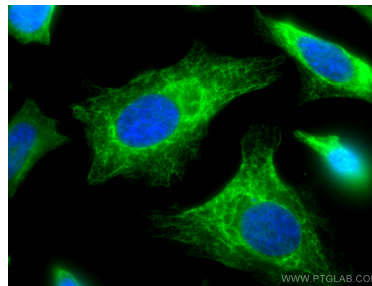
WB result of KRT19 antibody (14965-1-AP, 1:50,000) with si-Control and si-KRT19 transfected HeLa cells.



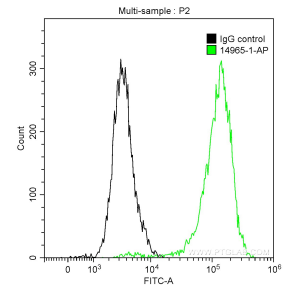
Immunohistochemical analysis of paraffin-embedded human colon tissue slide using 14965-1-AP (Cytokeratin 19 antibody) at dilution of 1:6400 (under 10x lens. Heat mediated antigen retrieval with Tris-EDTA buffer (pH 9.0).



Immunohistochemical analysis of paraffin-embedded human colon tissue slide using 14965-1-AP (Cytokeratin 19 antibody) at dilution of 1:6400 (under 40x lens. Heat mediated antigen retrieval with Tris-EDTA buffer (pH 9.0).



Immunofluorescent analysis of (4% PFA) fixed HeLa cells using Cytokeratin 19 antibody (14965-1-AP) at dilution of 1:400 and CoraLite®488-Conjugated AffiniPure Goat Anti-Rabbit IgG(H+L).



1X10⁶ MCF-7 cells were stained with 0.2 ug Anti-Human Cytokeratin 19 (14965-1-AP) and CoraLite®488-Conjugated AffiniPure Goat Anti-Rabbit IgG(H+L) at dilution 1:1000 (green), and 0.2 ug Control Antibody. Cells were fixed with 90% MeOH.