

À des fins de recherche uniquement

Anticorps Polyclonal de lapin anti-DDAH2



Numéro de catalogue: 14966-1-AP

6 Publications

Informations de base

Numéro de catalogue:
14966-1-AP

Taille:
150ul, Concentration: 400 µg/ml by Nanodrop and 233 µg/ml by Bradford method using BSA as the standard;

Hôte:
Lapin

IsoType:
IgG

Immunogen Catalog Number:
AG6831

Numéro d'acquisition GenBank:
BC001435

Identification du gène (NCBI):
23564

Nom complet:
dimethylarginine
dimethylaminohydrolase 2

MW calculé:
29 kDa

MW observés:
30 kDa

Méthode de purification:
Purification par affinité contre
l'antigène

Dilutions recommandées:
WB 1:1000-1:5000
IP 0.5-4.0 ug for IP and 1:500-1:1000
for WB
IHC 1:20-1:200

Applications

Applications testées:
IHC, IP, WB, ELISA

Demandes citées:
IHC, WB

Spécificité de l'espèce:
Humain, rat, souris

Espèces citées:
Humain, rat, souris

Remarque-IHC: il est suggéré de démasquer l'antigène avec un tampon de TE buffer pH 9,0; (*) A défaut, le démasquage de l'antigène peut être effectué avec un tampon citrate pH 6,0.

Contrôles positifs:

WB: cellules COLO 320, tissu de côlon de rat, tissu de côlon de souris

IP: cellules COLO 320,

IHC: tissu de cancer du côlon humain,

Informations générales

The DDAH family of proteins is formed by two isoforms, DDAH-1 and DDAH-2, both of which utilize ADMA as their substrate and increase NOS activity. DDAH-2, also named as DDAH, G6A, NG30, is the most prevalent isoform in blood vessels and endothelium and is important for embryonic development. It has also been linked to other diseases, such as hypertension, cerebral hemorrhage, cardiac disease, and diabetes. In cultured human endothelial cells, DDAH-2 had been found only in the cytosol, but in the nuclei of rat vascular smooth muscle cells. (PMID:21898353).

Publications notables

Autrice	Pubmed ID	Journal	Application
Ying Wang	34703990	iScience	WB
Kai Cui	28103290	PLoS One	WB, IHC
Ying Wang	30118322	FASEB J	WB

Stockage

Stockage:

Stocker à -20°C. Stable pendant un an après l'expédition.

Tampon de stockage:

PBS avec azoture de sodium à 0,02 % et glycérol à 50 % pH 7,3

L'aliquotage n'est pas nécessaire pour le stockage à -20C

*** Les 20ul contiennent 0,1% de BSA.

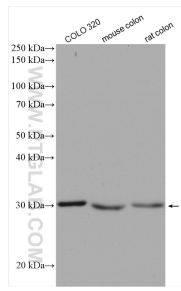
For technical support and original validation data for this product please contact:

T: 1 (888) 4PTGLAB (1-888-478-4522) (toll free in USA), or 1(312) 455-8498 (outside USA)

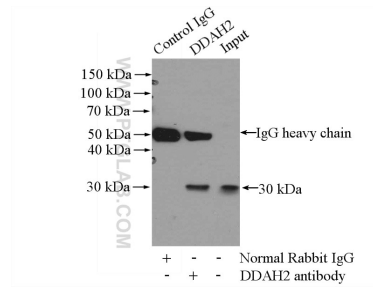
E: proteintech@ptglab.com
W: ptglab.com

This product is exclusively available under Proteintech Group brand and is not available to purchase from any other manufacturer.

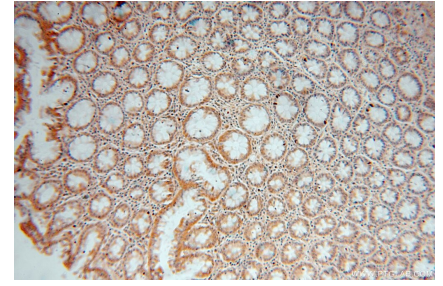
Données de validation sélectionnées



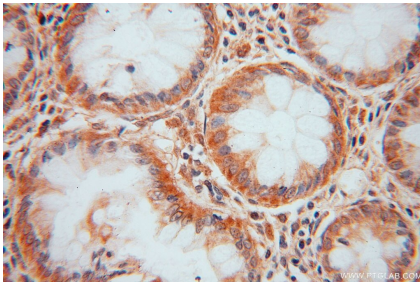
Various lysates were subjected to SDS PAGE followed by western blot with 14966-1-AP (DDAH2 antibody) at dilution of 1:4000 incubated at room temperature for 1.5 hours.



IP Result of anti-DDAH2 (IP:14966-1-AP, 3ug; Detection:14966-1-AP 1:500) with COLO 320 cells lysate 2000ug.



Immunohistochemical analysis of paraffin-embedded human colon cancer using 14966-1-AP (DDAH2 antibody) at dilution of 1:50 (under 10x lens).



Immunohistochemical analysis of paraffin-embedded human colon cancer using 14966-1-AP (DDAH2 antibody) at dilution of 1:50 (under 40x lens).