

À des fins de recherche uniquement

Anticorps Polyclonal de lapin anti-KATNB1



Numéro de catalogue: 14969-1-AP

Phare

10 Publications

Informations de base

Numéro de catalogue:
14969-1-AP

Taille:
150ul, Concentration: 450 µg/ml by Nanodrop and 300 µg/ml by Bradford method using BSA as the standard;

Hôte:
Lapin

Isotype:
IgG

Immunogen Catalog Number:
AG6836

Numéro d'acquisition GenBank:
BC001353

Identification du gène (NCBI):
10300

Nom complet:
katanin p80 (WD repeat containing) subunit B 1

MW calculé:
72 kDa

MW observés:
72-80 kDa

Méthode de purification:
Purification par affinité contre l'antigène

Dilutions recommandées:
WB 1:1000-1:6000
IP 0.5-4.0 ug for IP and 1:500-1:1000 for WB
IF 1:50-1:500

Applications

Applications testées:
IF, IP, WB, ELISA

Demandes citées:
IF, WB

Spécificité de l'espèce:
Humain, rat, souris

Espèces citées:
Humain, souris

Contrôles positifs:

WB : cellules A431, cellules HepG2, tissu de muscle squelettique de souris

IP : cellules HeLa,

IF : cellules HeLa,

Informations générales

Katanin p80 WD40-containing subunit B1 is a protein that in humans is encoded by the KATNB1 gene. Microtubules, polymers of alpha and beta tubulin subunits, form the mitotic spindle of a dividing cell and help to organize membranous organelles during interphase. Katanin is a heterodimer that consists of a 60 kDa ATPase (p60 subunit A 1) and an 80 kDa accessory protein (p80 subunit B 1). The p60 subunit acts to sever and disassemble microtubules, while the p80 subunit targets the enzyme to the centrosome. Katanin is a member of the AAA family of ATPases.

Publications notables

Autrice	Pubmed ID	Journal	Application
Michael D Chua	31595676	Anat Rec (Hoboken)	
Michael Dominic Chua	30415487	Cell Microbiol	IF
Feng Gao	31185410	Eur J Med Chem	WB

Stockage

Stockage:

Stocker à -20°C. Stable pendant un an après l'expédition.

Tampon de stockage:

PBS avec azoture de sodium à 0,02 % et glycérol à 50 % pH 7,3

L'aliquotage n'est pas nécessaire pour le stockage à -20C

*** Les 20ul contiennent 0,1% de BSA.

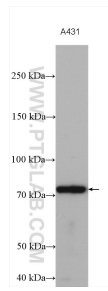
For technical support and original validation data for this product please contact:

T: 1 (888) 4PTGLAB (1-888-478-4522) (toll free in USA), or 1(312) 455-8498 (outside USA)

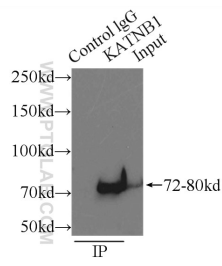
E: proteintech@ptglab.com
W: ptglab.com

This product is exclusively available under Proteintech Group brand and is not available to purchase from any other manufacturer.

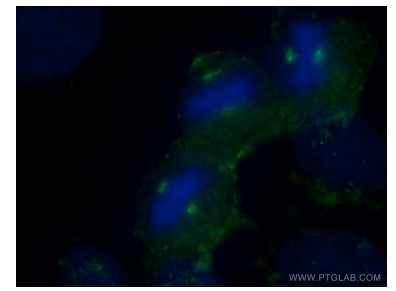
Données de validation sélectionnées



A431 cells were subjected to SDS PAGE followed by western blot with 14969-1-AP (KATNB1 antibody) at dilution of 1:3000 incubated at room temperature for 1.5 hours.



IP Result of anti-KATNB1 (IP:14969-1-AP, 3ug; Detection:14969-1-AP 1:500) with HeLa cells lysate 3000ug.



Immunofluorescent analysis of (-20°C Ethanol) fixed HeLa cells using 14969-1-AP (KATNB1 antibody) at dilution of 1:50 and Alexa Fluor 488-conjugated AffiniPure Goat Anti-Rabbit IgG(H+L).