

À des fins de recherche uniquement

Anticorps Polyclonal de lapin anti-MGLL



Numéro de catalogue: 14986-1-AP

Phare

5 Publications

Informations de base

Numéro de catalogue:
14986-1-AP

Taille:
150ul, Concentration: 450 µg/ml by
Nanodrop;

Hôte:
Lapin

Isotype:
IgG

Immunogen Catalog Number:
AG6970

Numéro d'acquisition GenBank:
BC000551

Identification du gène (NCBI):
11343

Nom complet:
monoglyceride lipase

MW calculé
33 kDa

Méthode de purification:
Purification par affinité contre
l'antigène

Dilutions recommandées:
WB 1:300-1:600
IP 0.5-4.0 ug for IP and 1:200-1:1000
for WB
IHC 1:50-1:500

Applications

Applications testées:
IHC, IP, WB, ELISA

Demandes citées:
IHC, WB

Spécificité de l'espèce:
Humain, rat, souris

Espèces citées:
Humain, rat, souris

Remarque-IHC: il est suggéré de démasquer l'antigène avec un tampon de TE buffer pH 9,0; (*) À défaut, le démasquage de l'antigène peut être effectué avec un tampon citrate pH 6,0.

Contrôles positifs:

WB : cellules HepG2, cellules L02, cellules SMMC-7721

IP : tissu hépatique de souris,

IHC : tissu de cancer du foie humain,

Informations générales

MGLL (monoglyceride lipase) is also named as MAGL, HU-K5 and belongs to the monoacylglycerol lipase family. It converts monoacylglycerides to free fatty acids and glycerol and functions together with hormone-sensitive lipase (HSL) in the mobilization of fatty acids from the triglyceride stores of adipocytes. MGL protein is ubiquitously expressed in kidney, spleen, heart, liver, stomach, brain, lung, adrenal gland, adipose tissue and in brain, there are two bands of 33 kDa and 35 kDa can be detected. The single protein species expressed in muscle is larger (around 40 kDa) (PMID:11470505). This protein can exist as a homodimer (PMID:19957260).

Publications notables

Autrice	Pubmed ID	Journal	Application
Jinming Zhang	32198011	Neuroscience	WB
Shuting Xia	27296803	Elife	WB
Xintian Chen	36694250	J Exp Clin Cancer Res	WB,IHC

Stockage

Stockage:

Stocker à -20°C. Stable pendant un an après l'expédition.

Tampon de stockage:

PBS avec azoture de sodium à 0,02 % et glycérol à 50 % pH 7,3

L'aliquotage n'est pas nécessaire pour le stockage à -20C

*** Les 20ul contiennent 0,1% de BSA.

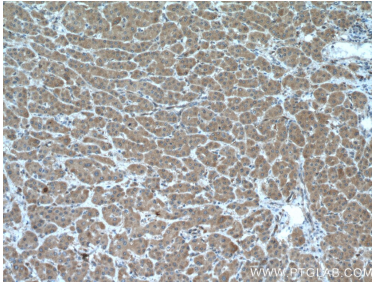
For technical support and original validation data for this product please contact:

T: 1 (888) 4PTGLAB (1-888-478-4522) (toll free in USA), or 1(312) 455-8498 (outside USA)

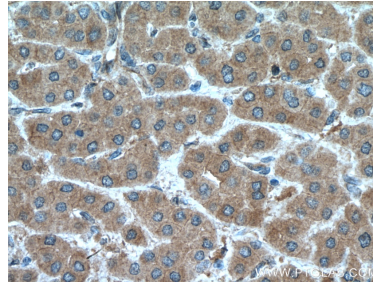
E: proteintech@ptglab.com
W: ptglab.com

This product is exclusively available under Proteintech Group brand and is not available to purchase from any other manufacturer.

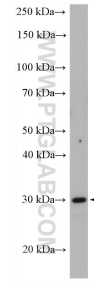
Données de validation sélectionnées



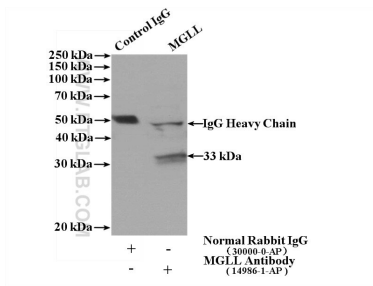
Immunohistochemical analysis of paraffin-embedded human liver cancer tissue slide using 14986-1-AP (MGLL antibody) at dilution of 1:200 (under 10x lens. Heat mediated antigen retrieval with Tris-EDTA buffer (pH 9.0)).



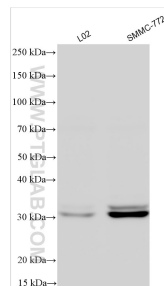
Immunohistochemical analysis of paraffin-embedded human liver cancer tissue slide using 14986-1-AP (MGLL antibody) at dilution of 1:200 (under 40x lens. Heat mediated antigen retrieval with Tris-EDTA buffer (pH 9.0)).



HepG2 cells were subjected to SDS PAGE followed by western blot with 14986-1-AP (MGLL antibody) at dilution of 1:600 incubated at room temperature for 1.5 hours.



IP Result of anti-MGLL (IP:14986-1-AP, 4ug; Detection:14986-1-AP 1:300) with mouse liver tissue lysate 4000ug.



Various lysates were subjected to SDS PAGE followed by western blot with 14986-1-AP (MGLL antibody) at dilution of 1:800 incubated at room temperature for 1.5 hours.