

À des fins de recherche uniquement

Anticorps Polyclonal de lapin anti-TCTN1



Numéro de catalogue: 15004-1-AP

27 Publications

Informations de base

| | | |
|--|---|---|
| Numéro de catalogue: 15004-1-AP | Numéro d'acquisition GenBank: BC062611 | Méthode de purification: Purification par affinité contre l'antigène |
| Taille: 150ul, Concentration: 400 µg/ml by Nanodrop and 233 µg/ml by Bradford method using BSA as the standard; | Identification du gène (NCBI): 79600 | Dilutions recommandées: WB 1:500-1:1000 IHC 1:20-1:200 IF 1:50-1:500 |
| Hôte: Lapin | Nom complet: tectonic family member 1 | |
| Isotype: IgG | MW calculé: 64 kDa | |
| Immunogen Catalog Number: AG6099 | MW observés: 55-64 kDa | |

Applications

Applications testées:

IF, IHC, WB, ELISA

Demandes citées:

IF, WB

Spécificité de l'espèce:

Humain, rat, souris

Espèces citées:

Humain, poisson-zèbre, souris

Remarque-IHC: il est suggéré de démasquer l'antigène avec un tampon de TE buffer pH 9,0; (*) A défaut, le démasquage de l'antigène peut être effectué avec un tampon citrate pH 6,0.

Contrôles positifs:

WB : tissu cérébral humain fœtal, tissu cérébral de rat, tissu cérébral de souris

IHC : tissu rénal humain,

IF : tissu rénal humain,

Informations générales

Tectonic-1, encoded by TCTN1 (TECT1) gene, belongs to the tectonic family of secreted and transmembrane proteins. Tectonic-1 is a component of the tectonic-like complex, a complex localized at the transition zone of primary cilia and acting as a barrier that prevents diffusion of transmembrane proteins between the cilia and plasma membranes. Multiple transcript variants encoding different isoforms have been found for this gene. Defects in TCTN1 are the cause of Joubert syndrome type 13 (JBTS13), a disorder presenting with cerebellar ataxia, oculomotor apraxia, hypotonia, neonatal breathing abnormalities and psychomotor delay. During neural tube development, mouse Tectonic is required for formation of the most ventral cell types and for full Hedgehog (Hh) pathway activation. Epistasis analyses reveal that Tectonic modulates Hh signal transduction downstream of Smoothened (Smo) and Rab23.

Publications notables

| Autrice | Pubmed ID | Journal | Application |
|--------------------|-----------|------------|-------------|
| Philipp P Prosseda | 28871046 | J Cell Sci | IF |
| Laura Vuolo | 30320547 | Elife | IF |
| Eunji Jung | 31914703 | FASEB J | IF |

Stockage

Stockage:

Stocker à -20°C. Stable pendant un an après l'expédition.

Tampon de stockage:

PBS avec azoture de sodium à 0,02 % et glycérol à 50 % pH 7,3

L'aliquotage n'est pas nécessaire pour le stockage à -20C

*** Les 20ul contiennent 0,1% de BSA.

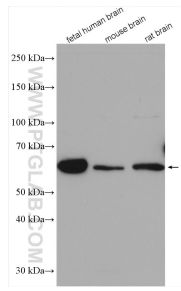
For technical support and original validation data for this product please contact:

T: 1 (888) 4PTGLAB (1-888-478-4522) (toll free in USA), or 1(312) 455-8498 (outside USA)

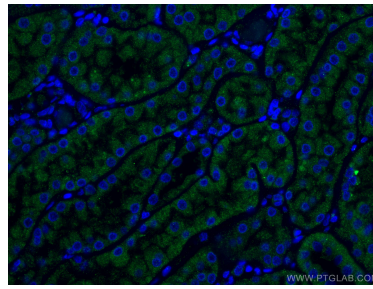
E: proteintech@ptglab.com
W: ptglab.com

This product is exclusively available under Proteintech Group brand and is not available to purchase from any other manufacturer.

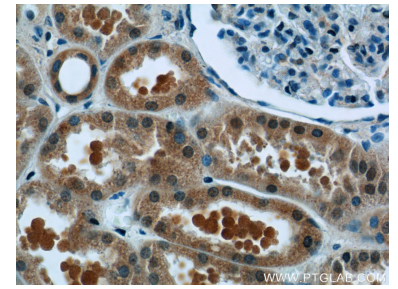
Données de validation sélectionnées



Various lysates were subjected to SDS PAGE followed by western blot with 15004-1-AP (TCTN1 antibody) at dilution of 1:800 incubated at room temperature for 1.5 hours.



Immunofluorescent analysis of (4% PFA) fixed human kidney tissue using TCTN1 antibody (15004-1-AP) at dilution of 1:200 and CoraLite®488-Conjugated AffiniPure Goat Anti-Rabbit IgG(H+L).



Immunohistochemical analysis of paraffin-embedded human kidney tissue slide using 15004-1-AP (TCTN1 Antibody) at dilution of 1:50 (under 40x lens).