

À des fins de recherche uniquement

Anticorps Polyclonal de lapin anti-HLA-E



Numéro de catalogue: 15008-1-AP **Phare**

Informations de base

Numéro de catalogue: 15008-1-AP	Numéro d'acquisition GenBank: BC002578	Méthode de purification: Purification par affinité contre l'antigène
Taille: 150ul , Concentration: 500 µg/ml by Nanodrop and 273 µg/ml by Bradford method using BSA as the standard;	Identification du gène (NCBI): 3133	Dilutions recommandées: WB 1:500-1:1000
Hôte: Lapin	Nom complet: major histocompatibility complex, class I, E	
Isotype: IgG	MW calculé 40 kDa	
Immunogen Catalog Number: AG6703	MW observés: 40 kDa	

Applications

Applications testées: WB, ELISA	Contrôles positifs: WB : cellules THP-1, cellules HUVEC, tissu hépatique humain, tissu rénal humain
Spécificité de l'espèce: Humain	

Informations générales

Human major histocompatibility complex (MHC) antigens, also referred to as human leukocyte antigens (HLA), are encoded by genes located on the short arm of chromosome 6 (6p21.3). There are two classes of HLA antigens: class I and class II. This class I molecules are membrane glycoproteins composed of a heavy (alpha) chain which is encoded by a HLA class I gene, and β 2-microglobulin light (beta) chain. The most extensively characterized members of the HLA class I gene family are the genes encoding the major transplantation antigens, HLA-A, B and C. HLA-E is a non-classical MHC class I molecule. HLA-E is frequently overexpressed in tumor diseases, transplants and virus-infected cells and represents an immunomodulatory molecule by binding to the receptors CD94/NKG2A, -B and -C on NK and T cells. Due to its immune suppressive features HLA-E expression might represent an important mechanism of tumors to escape immune surveillance. (PMID: 667938; 3375250; 2249951; 27589686)

Stockage

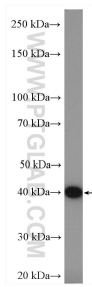
Stockage:
Stocker à -20°C. Stable pendant un an après l'expédition.
Tampon de stockage:
PBS avec azoture de sodium à 0,02 % et glycérol à 50 % pH 7,3
L'aliquotage n'est pas nécessaire pour le stockage à -20C

*** Les 20ul contiennent 0,1% de BSA.

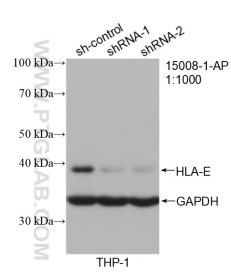
For technical support and original validation data for this product please contact:
T: 1 (888) 4PTGLAB (1-888-478-4522) (toll free in USA), or 1(312) 455-8498 (outside USA)
E: proteintech@ptglab.com
W: ptglab.com

This product is exclusively available under Proteintech Group brand and is not available to purchase from any other manufacturer.

Données de validation sélectionnées



THP-1 cells were subjected to SDS PAGE followed by western blot with 15008-1-AP (HLA-E antibody) at dilution of 1:600 incubated at room temperature for 1.5 hours.



WB result of HLA-E antibody (15008-1-AP; 1:1000; incubated at room temperature for 1.5 hours) with sh-Control and sh-HLA-E transfected THP-1 cells.