

À des fins de recherche uniquement

# Anticorps Polyclonal de lapin anti-SKP2



Numéro de catalogue: 15010-1-AP

Phare

45 Publications

## Informations de base

Numéro de catalogue:

15010-1-AP

Taille:

150ul, Concentration: 600 µg/ml by Nanodrop and 333 µg/ml by Bradford method using BSA as the standard;

Hôte:

Lapin

Isotype:

IgG

Immunogen Catalog Number:

AG6826

Numéro d'acquisition GenBank:

BC001441

Identification du gène (NCBI):

6502

Nom complet:

S-phase kinase-associated protein 2 (p45)

MW calculé

48 kDa

MW observés:

46-48 kDa

Méthode de purification:

Purification par affinité contre l'antigène

Dilutions recommandées:

WB 1:1000-1:5000

IP 0.5-4.0 ug for IP and 1:200-1:1000 for WB

IHC 1:50-1:500

IF 1:200-1:800

## Applications

Applications testées:

IF, IHC, IP, WB, ELISA

Demandes citées:

IF, IHC, IP, WB

Spécificité de l'espèce:

Humain

Espèces citées:

Humain, rat, souris

**Remarque-IHC: il est suggéré de démasquer l'antigène avec un tampon de TE buffer pH 9,0; (\*) A défaut, 'le démasquage de l'antigène peut être 'effectué avec un tampon citrate pH 6,0.**

Contrôles positifs:

WB : cellules HEK-293, cellules Jurkat

IP : cellules HEK-293,

IHC : tissu de cancer du poumon humain, tissu de cancer du sein humain

IF : cellules HepG2,

## Informations générales

SKP2(S-phase kinase-associated protein 2) is also named as FBXL1 and belongs to the F-box family. It regulates cellular proliferation by targeting several cell cycle-regulated proteins for ubiquitination and degradation, including cyclin-dependent kinase inhibitor CDKN1B(PMID:22200179). The acetylation of SKP2 in the nuclear localization signal (NLS) can promote its cytoplasmic retention, and cytoplasmic SKP2 enhances cellular migration through ubiquitination and destruction of CDH. This protein has 3 isoforms produced by alternative splicing (PMID:26497688, PMID:16902410).

## Publications notables

Autrice	Pubmed ID	Journal	Application
Yong-Li Zhang	34679694	Antioxidants (Basel)	WB
Xiaohong Xia	34599966	J Biol Chem	IF
Dian Bao	34803506	Int J Biol Sci	WB,IF

## Stockage

Stockage:

Stocker à -20°C. Stable pendant un an après l'expédition.

Tampon de stockage:

PBS avec azoture de sodium à 0,02 % et glycérol à 50 % pH 7,3

L'aliquotage n'est pas nécessaire pour le stockage à -20C

\*\*\* Les 20ul contiennent 0,1% de BSA.

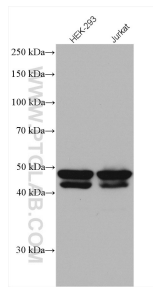
For technical support and original validation data for this product please contact:

T: 1 (888) 4PTGLAB (1-888-478-4522) (toll free in USA), or 1(312) 455-8498 (outside USA)

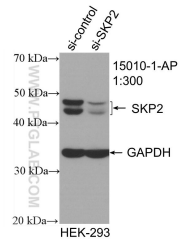
E: proteintech@ptglab.com  
W: ptglab.com

This product is exclusively available under Proteintech Group brand and is not available to purchase from any other manufacturer.

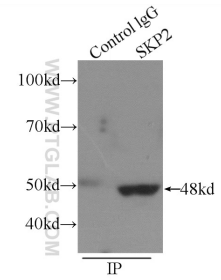
## Données de validation sélectionnées



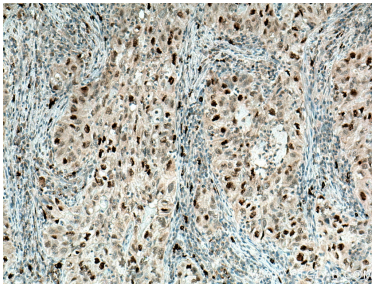
Various lysates were subjected to SDS PAGE followed by western blot with 15010-1-AP (SKP2 antibody) at dilution of 1:2500 incubated at room temperature for 1.5 hours.



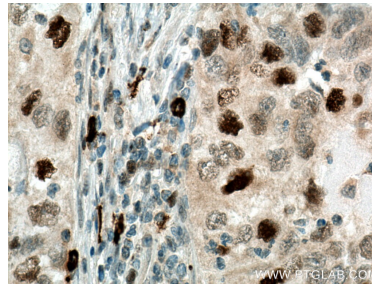
WB result of SKP2 antibody (15010-1-AP; 1:300; incubated at room temperature for 1.5 hours) with sh-Control and sh-SKP2 transfected HEK-293 cells.



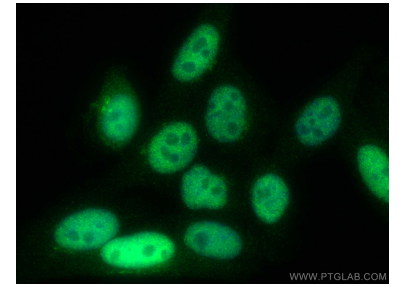
IP Result of anti-SKP2 (IP:15010-1-AP, 4ug; Detection:15010-1-AP 1:300) with HEK-293 cells lysate 2440ug.



Immunohistochemical analysis of paraffin-embedded human lung cancer tissue slide using 15010-1-AP (SKP2 antibody) at dilution of 1:200 (under 10x lens). Heat mediated antigen retrieval with Tris-EDTA buffer (pH 9.0).



Immunohistochemical analysis of paraffin-embedded human lung cancer tissue slide using 15010-1-AP (SKP2 antibody) at dilution of 1:200 (under 40x lens). Heat mediated antigen retrieval with Tris-EDTA buffer (pH 9.0).



Immunofluorescent analysis of (4% PFA) fixed HepG2 cells using SKP2 antibody (15010-1-AP) at dilution of 1:400 and CoraLite®488-Conjugated AffiniPure Goat Anti-Rabbit IgG(H+L).