

À des fins de recherche uniquement

Anticorps Polyclonal de lapin anti-DNPEP



Numéro de catalogue: 15016-1-AP

Phare

1 Publications

Informations de base

Numéro de catalogue:

15016-1-AP

Taille:

150ul, Concentration: 450 µg/ml by Nanodrop and 267 µg/ml by Bradford method using BSA as the standard;

Hôte:

Lapin

Isotype:

IgG

Immunogen Catalog Number:

AG6966

Numéro d'acquisition GenBank:

BC000653

Identification du gène (NCBI):

23549

Nom complet:

aspartyl aminopeptidase

MW calculé

52 kDa

MW observés:

55 kDa

Méthode de purification:

Purification par affinité contre l'antigène

Dilutions recommandées:

WB 1:1000-1:6000

IP 0.5-4.0 ug for IP and 1:500-1:1000 for WB

IF 1:20-1:200

Applications

Applications testées:

IF, IP, WB, ELISA

Demandes citées:

WB

Spécificité de l'espèce:

Humain

Espèces citées:

souris

Contrôles positifs:

WB : cellules HepG2, cellules K-562, cellules MCF-7

IP : cellules HEK-293,

IF : cellules MCF-7,

Informations générales

DNPEP, also named as ASPEP and DAP, plays an important role in intracellular protein and peptide metabolism. It catalyzes the hydrolysis of N-terminal aspartyl and glutamyl residues.

Publications notables

Autrice	Pubmed ID	Journal	Application
Nakamura Yukio Y	21576357	Mol Cell Biol	WB

Stockage

Stockage:

Stocker à -20°C. Stable pendant un an après l'expédition.

Tampon de stockage:

PBS avec azoture de sodium à 0,02 % et glycérol à 50 % pH 7,3

L'aliquotage n'est pas nécessaire pour le stockage à -20C

*** Les 20ul contiennent 0,1% de BSA.

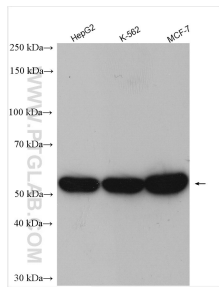
For technical support and original validation data for this product please contact:

T: 1 (888) 4PTGLAB (1-888-478-4522) (toll free in USA), or 1(312) 455-8498 (outside USA)

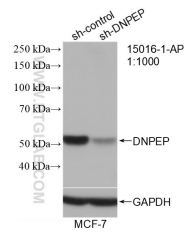
E: proteintech@ptglab.com
W: ptglab.com

This product is exclusively available under Proteintech Group brand and is not available to purchase from any other manufacturer.

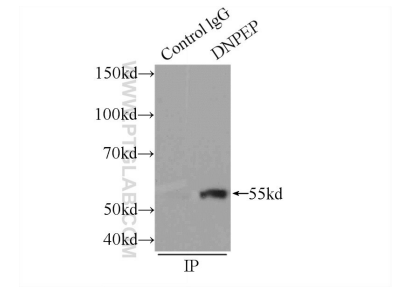
Données de validation sélectionnées



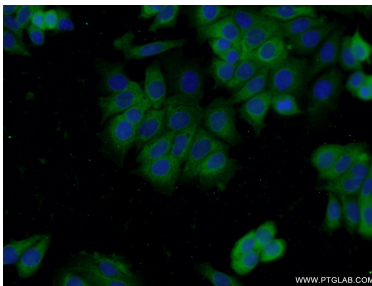
Various lysates were subjected to SDS PAGE followed by western blot with 15016-1-AP (DNPEP antibody) at dilution of 1:3000 incubated at room temperature for 1.5 hours.



WB result of DNPEP antibody (15016-1-AP; 1:1000; incubated at room temperature for 1.5 hours) with sh-Control and sh-DNPEP transfected MCF-7 cells.



IP Result of anti-DNPEP (IP:15016-1-AP, 3ug; Detection:15016-1-AP 1:500) with HEK-293 cells lysate 1760ug.



Immunofluorescent analysis of MCF-7 cells using 15016-1-AP (DNPEP antibody) at dilution of 1:50 and Alexa Fluor 488-conjugated AffiniPure Goat Anti-Rabbit IgG(H+L).