

À des fins de recherche uniquement

# Anticorps Polyclonal de lapin anti-CITED2



Numéro de catalogue: 15021-1-AP

1 Publications

## Informations de base

Numéro de catalogue:

15021-1-AP

Taille:

150ul, Concentration: 173 µg/ml by Nanodrop and 173 µg/ml by Bradford method using BSA as the standard;

Hôte:

Lapin

Isotype:

IgG

Immunogen Catalog Number:

AG7078

Numéro d'acquisition GenBank:

BC004377

Identification du gène (NCBI):

10370

Nom complet:

Cbp/p300-interacting transactivator, with Glu/Asp-rich carboxy-terminal domain, 2

MW calculé

28 kDa

MW observés:

36 kDa, 27 kDa

Méthode de purification:

Purification par affinité contre l'antigène

Dilutions recommandées:

WB 1:500-1:1000

IF 1:50-1:500

## Applications

Applications testées:

IF, WB, ELISA

Demandes citées:

WB

Spécificité de l'espèce:

Humain, rat, souris

Espèces citées:

souris

Contrôles positifs:

WB : cellules SH-SY5Y, tissu cérébral de souris

IF : cellules SH-SY5Y,

## Informations générales

CITED2, also named as P35srj, is a cAMP-responsive element-binding protein (CBP)/p300-transactivator, with an ED(Glu/Asp)-rich C-terminal domain that acts as an important modulator in the development of the heart [PMID:10552932]. There are two isoforms of CITED2 protein and the calculated molecular weight of them are 24kDa and 28 kDa. The 28 kDa isoform having modification site may migrate to 35 kDa and 24 kDa isoform having modification site may migrate to 27 kDa (PMID: 23082118). It is proposed to be a negative regulator of HIF-1α through its competitive binding to the CH1 domain of CBP/p300, which mediated signaling and to a decrease in HIF-1-responsive genes such as VEGF [PMID:9887100]. In addition, it is also a co-activator of the transcriptional activity of the TFAP2 isoform, which is an extensively expressed nuclear protein with functions in embryogenesis, inflammation, and stress responses[PMID:22735262].

## Publications notables

Autrice	Pubmed ID	Journal	Application
Yan Jiang	28013219	Toxicol Sci	WB

## Stockage

Stockage:

Stocker à -20°C. Stable pendant un an après l'expédition.

Tampon de stockage:

PBS avec azoture de sodium à 0,02 % et glycérol à 50 % pH 7,3

L'aliquotage n'est pas nécessaire pour le stockage à -20C

\*\*\* Les 20ul contiennent 0,1% de BSA.

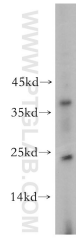
For technical support and original validation data for this product please contact:

T: 1 (888) 4PTGLAB (1-888-478-4522) (toll free in USA), or 1(312) 455-8498 (outside USA)

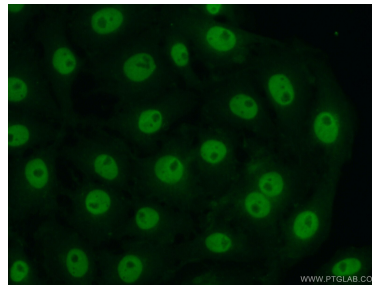
E: proteintech@ptglab.com  
W: ptglab.com

This product is exclusively available under Proteintech Group brand and is not available to purchase from any other manufacturer.

## Données de validation sélectionnées



SH-SY5Y cells were subjected to SDS PAGE followed by western blot with 15021-1-AP (CITED2 antibody) at dilution of 1:400 incubated at room temperature for 1.5 hours.



Immunofluorescent analysis of (10% Formaldehyde) fixed SH-SY5Y cells using 15021-1-AP (CITED2 antibody) at dilution of 1:50 and Alexa Fluor 488-conjugated AffiniPure Goat Anti-Rabbit IgG(H+L).