

À des fins de recherche uniquement

# Anticorps Polyclonal de lapin anti-Thymidylate synthase



Numéro de catalogue: 15047-1-AP

Phare

26 Publications

## Informations de base

Numéro de catalogue:  
15047-1-AP

Taille:  
150ul, Concentration: 850 µg/ml by Nanodrop and 307 µg/ml by Bradford method using BSA as the standard;

Hôte:  
Lapin

Isotype:  
IgG

Immunogen Catalog Number:  
AG7027

Numéro d'acquisition GenBank:  
BC002567

Identification du gène (NCBI):  
7298

Nom complet:  
thymidylate synthetase

MW calculé  
36 kDa

MW observés:  
32-36 kDa

Méthode de purification:  
Purification par affinité contre l'antigène

Dilutions recommandées:  
WB 1:500-1:5000  
IP 0.5-4.0 ug for IP and 1:500-1:1000 for WB  
IHC 1:50-1:500  
IF 1:50-1:500

## Applications

Applications testées:  
FC, IF, IHC, IP, WB, ELISA

Demandes citées:  
IHC, WB

Spécificité de l'espèce:  
Humain, rat, souris

Espèces citées:  
Humain, souris

**Remarque-IHC: il est suggéré de démasquer l'antigène avec un tampon de TE buffer pH 9,0; (\*) À défaut, 'le démasquage de l'antigène peut être 'effectué avec un tampon citrate pH 6,0.**

Contrôles positifs:

WB : cellules HeLa, cellules HEK-293, cellules HEK-293T, cellules MCF-7, cellules NIH/3T3

IP : cellules HeLa,

IHC : tissu de cancer de l'endomètre humain, tissu de cancer du côlon humain

IF : cellules HepG2,

## Informations générales

Thymidylate synthase gene (TYMS) encodes thymidylate synthase (TS) which is an important factor in the growth of tumor cells. TS can catalyze the transformation of intracellular uridine monophosphate (UMP) into dTMP which is required for DNA replication and repairing. TS is a key enzyme in the process of cell proliferation, also is the important target enzymes of 5-FU and other chemotherapy drugs. The expression of TYMS is negatively correlated with the efficacy of chemotherapy and the prognosis of patients who suffer from rectal cancer, breast cancer, colorectal cancer, gastric cancer, head and neck cancer, esophageal cancer, pancreatic cancer and so on.

## Publications notables

Autrice	Pubmed ID	Journal	Application
Stephen Hsien-Chi Yuan	36139323	Animals (Basel)	WB
Li Cui	34533844	J Pineal Res	WB
Yiqing Zhao	32907836	Cancer Res	WB

## Stockage

Stockage:

Stocker à -20°C. Stable pendant un an après l'expédition.

Tampon de stockage:

PBS avec azoture de sodium à 0,02 % et glycérol à 50 % pH 7,3

L'aliquotage n'est pas nécessaire pour le stockage à -20C

\*\*\* Les 20ul contiennent 0,1% de BSA.

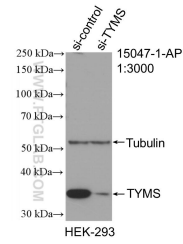
For technical support and original validation data for this product please contact:

T: 1 (888) 4PTGLAB (1-888-478-4522) (toll free in USA), or 1(312) 455-8498 (outside USA)

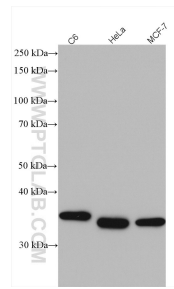
E: proteintech@ptglab.com  
W: ptglab.com

This product is exclusively available under Proteintech Group brand and is not available to purchase from any other manufacturer.

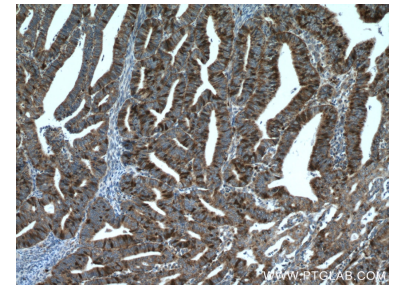
## Données de validation sélectionnées



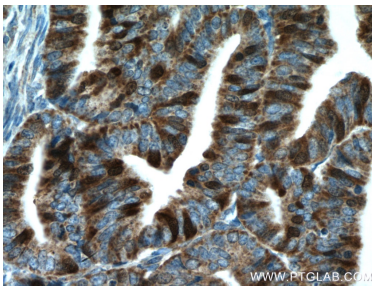
WB result of Thymidylate synthase antibody (15047-1-AP; 1:3000; incubated at room temperature for 1.5 hours) with sh-Control and sh-Thymidylate synthase transfected HEK-293 cells.



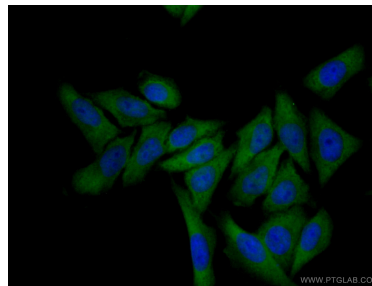
Various lysates were subjected to SDS PAGE followed by western blot with 15047-1-AP (Thymidylate synthase antibody) at dilution of 1:3000 incubated at room temperature for 1.5 hours.



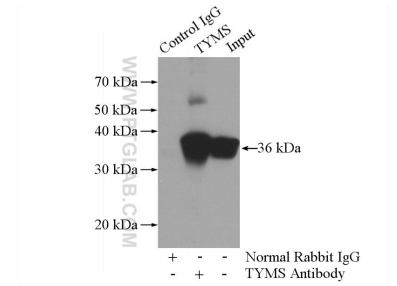
Immunohistochemical analysis of paraffin-embedded human endometrial cancer tissue slide using 15047-1-AP (Thymidylate synthase antibody) at dilution of 1:200 (under 10x lens. Heat mediated antigen retrieval with Tris-EDTA buffer (pH 9.0).



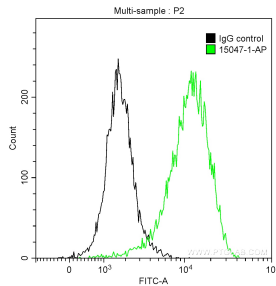
Immunohistochemical analysis of paraffin-embedded human endometrial cancer tissue slide using 15047-1-AP (Thymidylate synthase antibody) at dilution of 1:200 (under 40x lens. Heat mediated antigen retrieval with Tris-EDTA buffer (pH 9.0).



Immunofluorescent analysis of (-20°C Ethanol) fixed HepG2 cells using 15047-1-AP (Thymidylate synthase antibody) at dilution of 1:50 and CoraLite488-Conjugated AffiniPure Goat Anti-Rabbit IgG(H+L).



IP Result of anti-Thymidylate synthase (IP:15047-1-AP, 3ug; Detection:15047-1-AP 1:600) with HeLa cells lysate 3200ug.



1X10<sup>6</sup> HeLa cells were intracellularly stained with 0.2 ug Anti-Human Thymidylate synthase (15047-1-AP) and CoraLite<sup>®</sup>488-Conjugated AffiniPure Goat Anti-Rabbit IgG(H+L) at dilution 1:1000 (green), and 0.2 ug Control Antibody. Cells were fixed with 90% MeOH.