

À des fins de recherche uniquement

# Anticorps Polyclonal de lapin anti-SMOX



Numéro de catalogue: 15052-1-AP

Phare

25 Publications

## Informations de base

Numéro de catalogue:	15052-1-AP	Numéro d'acquisition GenBank:	BC000669	Méthode de purification:	Purification par affinité contre l'antigène
Taille:	150ul , Concentration: 750 µg/ml by Nanodrop;	Identification du gène (NCBI):	54498	Dilutions recommandées:	WB 1:2000-1:10000 IHC 1:50-1:500
Hôte:	Lapin	Nom complet:	spermine oxidase		
Isotype:	IgG	MW calculé	62 kDa		
Immunogen Catalog Number:	AG7035	MW observés:	56-65 kDa		

## Applications

### Applications testées:

IHC, WB, ELISA

### Demandes citées:

IF, IHC, WB

### Spécificité de l'espèce:

Humain, rat, souris

### Espèces citées:

Humain, rat, souris

### Contrôles positifs:

WB : cellules A549, cellules HeLa, cellules MCF-7, cellules PC-13, cellules PC-3

IHC : tissu de cancer de la prostate humain, tissu de cancer de l'estomac humain, tissu de gliome humain

**Remarque-IHC: il est suggéré de démasquer l'antigène avec un tampon de TE buffer pH 9,0; (\*) À défaut, le démasquage de l'antigène peut être effectué avec un tampon citrate pH 6,0.**

## Informations générales

SMOX(Spermine oxidase) is also named as SMO, PAO-1 and PAOh1. It belongs to the class of polyamine oxidases (PAOs).The flavoprotein SMO, which specifically oxidizes Spm, is one of the key regulatory enzymes involved in polyamine homeostasis in animal cells (PMID:14764092). It has 6 isoforms produced by alternative splicing with the MW of 61 kDa, 56 kDa, 21 kDa, 60 kDa, 43 kDa and 65 kDa, respectively.

## Publications notables

Autrice	Pubmed ID	Journal	Application
Takeshi Uemura	32995657	Heliyon	WB
Anna Bianchi-Smiraglia	30198908	J Clin Invest	WB
Bin Xiang	36353478	Front Pharmacol	IHC

## Stockage

### Stockage:

Stocker à -20°C. Stable pendant un an après l'expédition.

### Tampon de stockage:

PBS avec azoture de sodium à 0,02 % et glycérol à 50 % pH 7,3

L'aliquotage n'est pas nécessaire pour le stockage à -20C

\*\*\* Les 20ul contiennent 0,1% de BSA.

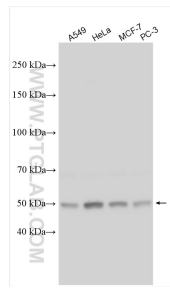
For technical support and original validation data for this product please contact:

T: 1 (888) 4PTGLAB (1-888-478-4522) (toll free in USA), or 1(312) 455-8498 (outside USA)

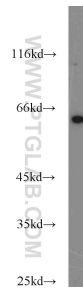
E: proteintech@ptglab.com  
W: ptglab.com

This product is exclusively available under Proteintech Group brand and is not available to purchase from any other manufacturer.

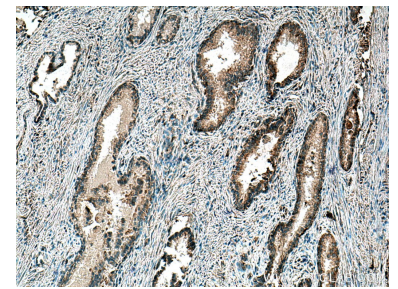
## Données de validation sélectionnées



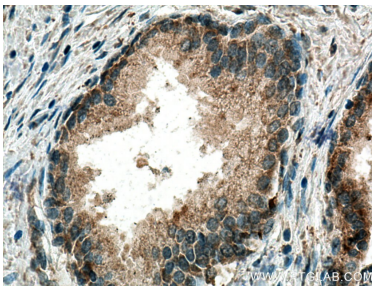
Various lysates were subjected to SDS PAGE followed by western blot with 15052-1-AP (SMOX antibody) at dilution of 1:5000 incubated at room temperature for 1.5 hours.



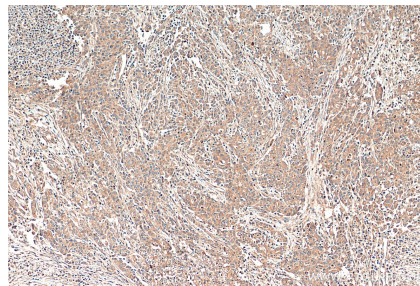
PC-13 cells were subjected to SDS PAGE followed by western blot with 15052-1-AP (SMOX antibody) at dilution of 1:500 incubated at room temperature for 1.5 hours.



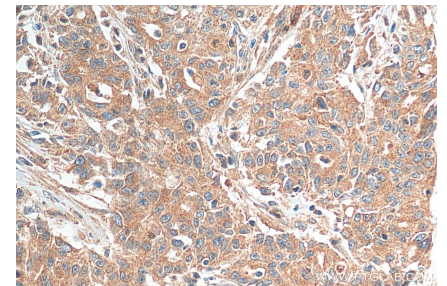
Immunohistochemical analysis of paraffin-embedded human prostate cancer tissue slide using 15052-1-AP (SMOX antibody) at dilution of 1:200 (under 10x lens). Heat mediated antigen retrieval with Tris-EDTA buffer (pH 9.0).



Immunohistochemical analysis of paraffin-embedded human prostate cancer tissue slide using 15052-1-AP (SMOX antibody) at dilution of 1:200 (under 40x lens). Heat mediated antigen retrieval with Tris-EDTA buffer (pH 9.0).



Immunohistochemical analysis of paraffin-embedded human stomach cancer tissue slide using 15052-1-AP (SMOX antibody) at dilution of 1:200 (under 10x lens). Heat mediated antigen retrieval with Tris-EDTA buffer (pH 9.0).



Immunohistochemical analysis of paraffin-embedded human stomach cancer tissue slide using 15052-1-AP (SMOX antibody) at dilution of 1:200 (under 40x lens). Heat mediated antigen retrieval with Tris-EDTA buffer (pH 9.0).