

À des fins de recherche uniquement

# Anticorps Polyclonal de lapin anti-SUOX



Numéro de catalogue: 15075-1-AP

4 Publications

## Informations de base

Numéro de catalogue:  
15075-1-AP

Taille:  
150ul, Concentration: 1000 µg/ml by  
Nanodrop and 753 µg/ml by Bradford  
method using BSA as the standard;

Hôte:  
Lapin

Isotype:  
IgG

Immunogen Catalog Number:  
AG7146

Numéro d'acquisition GenBank:  
BC065193

Identification du gène (NCBI):  
6821

Nom complet:  
sulfite oxidase

MW calculé  
60 kDa

MW observés:  
52 kDa, 60 kDa

Méthode de purification:  
Purification par affinité contre  
l'antigène

Dilutions recommandées:  
WB 1:500-1:3000  
IP 0.5-4.0 ug for IP and 1:500-1:2400  
for WB  
IHC 1:50-1:500  
IF 1:10-1:100

## Applications

Applications testées:  
FC, IF, IHC, IP, WB, ELISA

Demandes citées:  
WB

Spécificité de l'espèce:  
Humain, rat, souris

Espèces citées:  
Humain, souris

**Remarque-IHC: il est suggéré de démasquer  
l'antigène avec un tampon de TE buffer pH  
9,0; (\*) A défaut, 'le démasquage de  
l'antigène peut être 'effectué avec un  
tampon citrate pH 6,0.**

Contrôles positifs:

WB : tissu hépatique humain, cellules LO2, tissu  
hépatique de souris

IP : tissu hépatique de souris,

IHC : tissu hépatique humain,

IF : cellules HeLa,

## Informations générales

SUOX(sulfite oxidase) catalyzes the oxidation of sulfite to sulfate, the terminal reaction in the oxidative degradation pathway of the sulfur-containing amino acids cysteine and methionine. The enzyme is a dimer of identical subunits and is located in the intermembrane space of mitochondria(PMID:9600976). Defects in SUOX are the cause of isolated sulfite oxidase deficiency (ISOD).

## Publications notables

Autrice	Pubmed ID	Journal	Application
Pilar González-García	32975579	Hum Mol Genet	WB
Marta Luna-Sánchez	27856619	EMBO Mol Med	WB
Roman Heather B HB	23350603	Antioxid Redox Signal	WB

## Stockage

Stockage:

Stocker à -20°C. Stable pendant un an après l'expédition.

Tampon de stockage:

PBS avec azoture de sodium à 0,02 % et glycérol à 50 % pH 7,3

L'aliquotage n'est pas nécessaire pour le stockage à -20C

\*\*\* Les 20ul contiennent 0,1% de BSA.

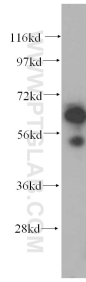
For technical support and original validation data for this product please contact:

T: 1 (888) 4PTGLAB (1-888-478-4522) (toll free  
in USA), or 1(312) 455-8498 (outside USA)

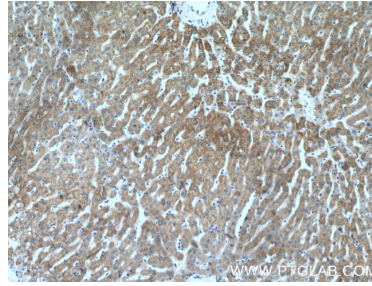
E: proteintech@ptglab.com  
W: ptglab.com

This product is exclusively available under Proteintech Group brand and is not available to purchase from any other manufacturer.

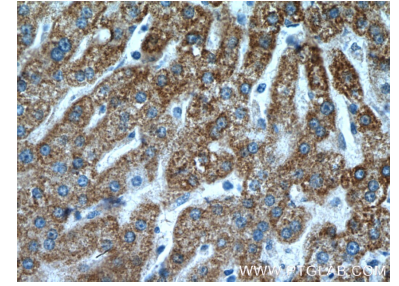
## Données de validation sélectionnées



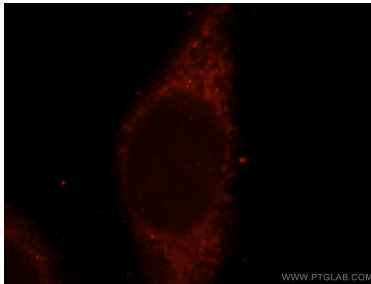
human liver tissue were subjected to SDS PAGE followed by western blot with 15075-1-AP (SUOX antibody) at dilution of 1:1000 incubated at room temperature for 1.5 hours.



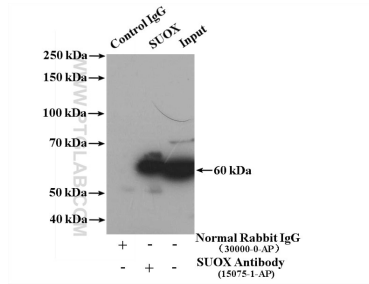
Immunohistochemical analysis of paraffin-embedded human liver tissue slide using 15075-1-AP (SUOX antibody) at dilution of 1:200 (under 10x lens).



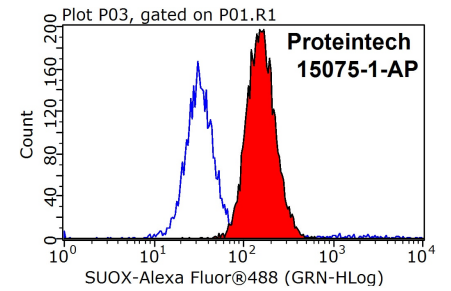
Immunohistochemical analysis of paraffin-embedded human liver tissue slide using 15075-1-AP (SUOX antibody) at dilution of 1:200 (under 40x lens).



Immunofluorescent analysis of HeLa cells, using SUOX antibody 15075-1-AP at 1:25 dilution and Rhodamine-labeled goat anti-rabbit IgG (red).



IP result of anti-SUOX (IP:15075-1-AP, 4ug; Detection:15075-1-AP 1:1200) with mouse liver tissue lysate 6000 ug.



1X10<sup>6</sup> HeLa cells were stained with 0.2ug SUOX antibody (15075-1-AP, red) and control antibody (blue). Fixed with 90% MeOH blocked with 3% BSA (30 min). Alexa Fluor 488-conjugated AffiniPure Goat Anti-Rabbit IgG(H+L) with dilution 1:1000.