

À des fins de recherche uniquement

Anticorps Polyclonal de lapin anti-POLDIP2



Numéro de catalogue: 15080-1-AP

3 Publications

Informations de base

Numéro de catalogue:

15080-1-AP

Taille:

150ul, Concentration: 273 µg/ml by Nanodrop and 273 µg/ml by Bradford method using BSA as the standard;

Hôte:

Lapin

Isotype:

IgG

Immunogen Catalog Number:

AG7154

Numéro d'acquisition GenBank:

BC000655

Identification du gène (NCBI):

26073

Nom complet:

polymerase (DNA-directed), delta interacting protein 2

MW calculé

42 kDa

MW observés:

38 kDa

Méthode de purification:

Purification par affinité contre l'antigène

Dilutions recommandées:

WB 1:500-1:3000

IP 0.5-4.0 ug for IP and 1:500-1:2000 for WB

IF 1:10-1:100

Applications

Applications testées:

IF, IP, WB, ELISA

Demandes citées:

IF, WB

Spécificité de l'espèce:

Humain, rat, souris

Espèces citées:

Humain, souris

Contrôles positifs:

WB : cellules HeLa, cellules HepG2, cellules Jurkat, cellules K-562

IP : cellules HeLa,

IF : cellules HeLa,

Informations générales

POLDIP2 (Polymerase delta-interacting protein 2) is also named as PDIP38, POLD4. It is as a unique positive regulator of Nox4 via its association with p22phox and together with Nox4, has profound effects on Rhoddependent cytoskeletal remodeling. It is also as a regulator of cell division. It consists of 368 amino acids and has a predicted molecular mass of 42 kDa, with a potential signal peptide cleavage site after the first N-terminal 48 residues, which would result in a protein of 37 kDa (PMID:19574552). Endogenous human and rat POLDIP2 localized to the nucleus, plasma membrane, and cytoplasm (PMID:17623671).

Publications notables

Autrice	Pubmed ID	Journal	Application
Agnes Wong	23989611	Cell Cycle	IF
Jana Key	34943861	Cells	WB
Maga Giovanni G	24191025	Proc Natl Acad Sci U S A	WB

Stockage

Stockage:

Stocker à -20°C. Stable pendant un an après l'expédition.

Tampon de stockage:

PBS avec azoture de sodium à 0,02 % et glycérol à 50 % pH 7,3

L'aliquotage n'est pas nécessaire pour le stockage à -20C

*** Les 20ul contiennent 0,1% de BSA.

For technical support and original validation data for this product please contact:

T: 1 (888) 4PTGLAB (1-888-478-4522) (toll free in USA), or 1(312) 455-8498 (outside USA)

E: proteintech@ptglab.com
W: ptglab.com

This product is exclusively available under Proteintech Group brand and is not available to purchase from any other manufacturer.

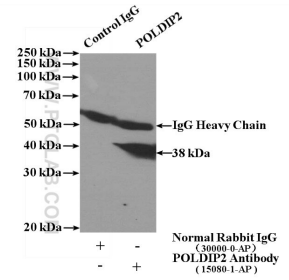
Données de validation sélectionnées



HeLa cells were subjected to SDS PAGE followed by western blot with 15080-1-AP (POLDIP2 antibody) at dilution of 1:500 incubated at room temperature for 1.5 hours.



Immunofluorescent analysis of HeLa cells, using POLDIP2 antibody 15080-1-AP at 1:25 dilution and Rhodamine-labeled goat anti-rabbit IgG (red).



IP Result of anti-POLDIP2 (IP:15080-1-AP, 4ug; Detection:15080-1-AP 1:1.000) with HeLa cells lysate 1600ug.