

À des fins de recherche uniquement

# Anticorps Polyclonal de lapin anti-RPS19



Numéro de catalogue: 15085-1-AP

6 Publications

## Informations de base

Numéro de catalogue:

15085-1-AP

Taille:

150ul, Concentration: 350 µg/ml by Nanodrop and 307 µg/ml by Bradford method using BSA as the standard;

Hôte:

Lapin

Isotype:

IgG

Immunogen Catalog Number:

AG7164

Numéro d'acquisition GenBank:

BC000023

Identification du gène (NCBI):

6223

Nom complet:

ribosomal protein S19

MW calculé

16 kDa

MW observés:

16 kDa

Méthode de purification:

Purification par affinité contre l'antigène

Dilutions recommandées:

WB 1:1000-1:3000

IP 0.5-4.0 ug for IP and 1:500-1:1000 for WB

IHC 1:20-1:200

## Applications

Applications testées:

IHC, IP, WB, ELISA

Demandes citées:

IF, IHC, WB

Spécificité de l'espèce:

Humain, rat, souris

Espèces citées:

Humain, souris

**Remarque-IHC: il est suggéré de démasquer l'antigène avec un tampon de TE buffer pH 9.0; (\*) À défaut, 'le démasquage de l'antigène peut être 'effectué avec un tampon citrate pH 6,0.**

Contrôles positifs:

WB : cellules Caco-2, cellules HEK-293, cellules HeLa, cellules K-562, tissu de côlon de rat, tissu testiculaire de souris, tissu testiculaire humain

IP : cellules HEK-293,

IHC : tissu de cancer du côlon humain,

## Informations générales

The mammalian ribosome consists of 4 RNA species and approximately 80 different proteins. The ribosomal proteins are encoded by complex gene families that include at least 1 active intron-containing gene and multiple processed pseudogenes. The RPS19 protein is a component of the 40S ribosomal subunit [PMID: 17726054]. Diamond-Blackfan anemia (DBA) is a congenital erythroid hypoplasia caused by a functional haploinsufficiency of genes encoding for ribosomal proteins. Among these genes, ribosomal protein S19 (RPS19) is mutated most frequently [PMID:21989989]. It also a p53-related ribosomal protein that possibly involves cellular apoptosis through the BAX/p53 pathway [PMID:22272377].

## Publications notables

Autrice	Pubmed ID	Journal	Application
Dhaval Varshney	34815422	Sci Rep	WB
Zhiyuan Lu	34739188	Adv Sci (Weinh)	WB
Joy Armistead	26676230	BBA Clin	WB

## Stockage

Stockage:

Stocker à -20°C. Stable pendant un an après l'expédition.

Tampon de stockage:

PBS avec azoture de sodium à 0,02 % et glycérol à 50 % pH 7,3

L'aliquotage n'est pas nécessaire pour le stockage à -20C

\*\*\* Les 20ul contiennent 0,1% de BSA.

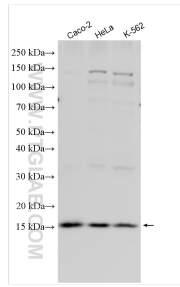
For technical support and original validation data for this product please contact:

T: 1 (888) 4PTGLAB (1-888-478-4522) (toll free in USA), or 1(312) 455-8498 (outside USA)

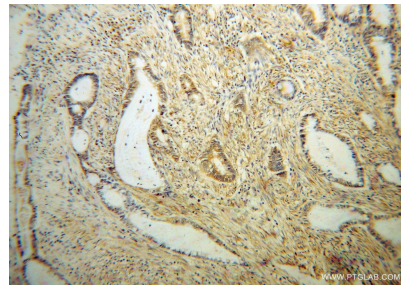
E: proteintech@ptglab.com  
W: ptglab.com

This product is exclusively available under Proteintech Group brand and is not available to purchase from any other manufacturer.

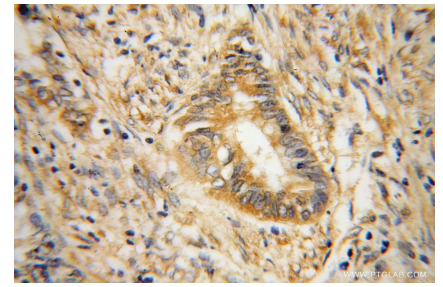
## Données de validation sélectionnées



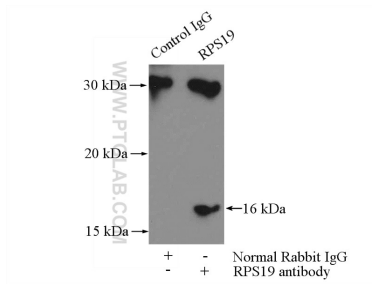
Various lysates were subjected to SDS PAGE followed by western blot with 15085-1-AP (RPS19 antibody) at dilution of 1:3000 incubated at room temperature for 1.5 hours.



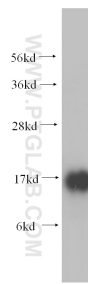
Immunohistochemical analysis of paraffin-embedded human colon cancer using 15085-1-AP (RPS19 antibody) at dilution of 1:100 (under 10x lens).



Immunohistochemical analysis of paraffin-embedded human colon cancer using 15085-1-AP (RPS19 antibody) at dilution of 1:100 (under 40x lens).



IP Result of anti-RPS19 (IP:15085-1-AP, 4ug; Detection:15085-1-AP 1:500) with HEK-293 cells lysate 880ug.



human testis tissue were subjected to SDS PAGE followed by western blot with 15085-1-AP (RPS19 antibody) at dilution of 1:400 incubated at room temperature for 1.5 hours.