

À des fins de recherche uniquement

Anticorps Polyclonal de lapin anti-ALDH3A2



Numéro de catalogue: 15090-1-AP

5 Publications

Informations de base

Numéro de catalogue:

15090-1-AP

Taille:

150ul, Concentration: 280 µg/ml by Nanodrop and 280 µg/ml by Bradford method using BSA as the standard;

Hôte:

Lapin

Isotype:

IgG

Immunogen Catalog Number:

AG1687

Numéro d'acquisition GenBank:

BC002430

Identification du gène (NCBI):

224

Nom complet:

aldehyde dehydrogenase 3 family, member A2

MW calculé

55 kDa

MW observés:

50-57 kDa

Méthode de purification:

Purification par affinité contre l'antigène

Dilutions recommandées:

WB 1:1000-1:4000

IP 0.5-4.0 ug for IP and 1:500-1:2000 for WB

IHC 1:50-1:500

IF 1:10-1:100

Applications

Applications testées:

FC, IF, IHC, IP, WB, ELISA

Demandes citées:

IHC, WB

Spécificité de l'espèce:

Humain, rat, souris

Espèces citées:

Humain, rat, souris

Remarque-IHC: il est suggéré de démasquer l'antigène avec un tampon de TE buffer pH 9.0; (*) A défaut, le démasquage de l'antigène peut être effectué avec un tampon citrate pH 6,0.

Contrôles positifs:

WB : cellules HEK-293T, tissu hépatique de rat, tissu hépatique de souris

IP : cellules HEK-293,

IHC : tissu de cancer du foie humain,

IF : cellules HeLa,

Informations générales

Publications notables

Autrice	Pubmed ID	Journal	Application
Wei Chen	31565850	J Cell Mol Med	IHC
Pamela A Young	30190326	J Biol Chem	WB
Kristian Nzogang Fomo	36313990	Front Med (Lausanne)	

Stockage

Stockage:

Stocker à -20°C. Stable pendant un an après l'expédition.

Tampon de stockage:

PBS avec azoture de sodium à 0,02 % et glycérol à 50 % pH 7,3

L'aliquotage n'est pas nécessaire pour le stockage à -20C

*** Les 20ul contiennent 0,1% de BSA.

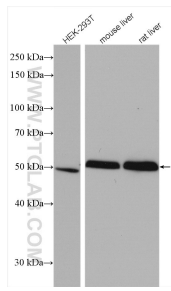
For technical support and original validation data for this product please contact:

T: 1 (888) 4PTGLAB (1-888-478-4522) (toll free in USA), or 1(312) 455-8498 (outside USA)

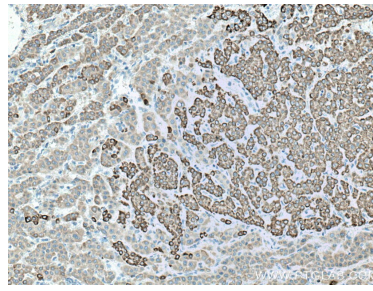
E: proteintech@ptglab.com
W: ptglab.com

This product is exclusively available under Proteintech Group brand and is not available to purchase from any other manufacturer.

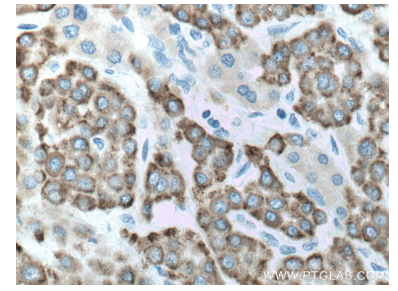
Données de validation sélectionnées



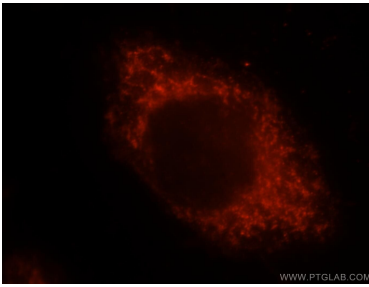
Various lysates were subjected to SDS PAGE followed by western blot with 15090-1-AP (ALDH3A2 antibody) at dilution of 1:2000 incubated at room temperature for 1.5 hours.



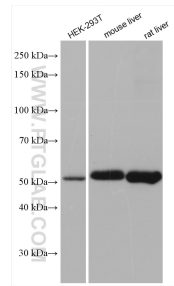
Immunohistochemical analysis of paraffin-embedded human liver cancer tissue slide using 15090-1-AP (ALDH3A2 antibody) at dilution of 1:200 (under 10x lens). Heat mediated antigen retrieval with Tris-EDTA buffer (pH 9.0).



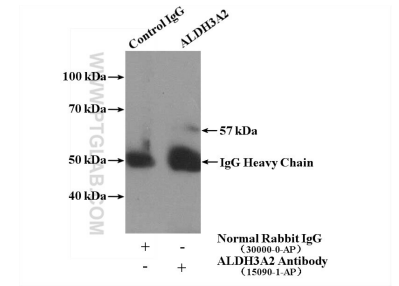
Immunohistochemical analysis of paraffin-embedded human liver cancer tissue slide using 15090-1-AP (ALDH3A2 antibody) at dilution of 1:200 (under 40x lens). Heat mediated antigen retrieval with Tris-EDTA buffer (pH 9.0).



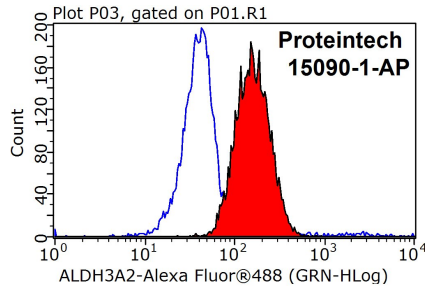
Immunofluorescent analysis of HeLa cells, using ALDH3A2 antibody 15090-1-AP at 1:25 dilution and Rhodamine-labeled goat anti-rabbit IgG (red).



Various lysates were subjected to SDS PAGE followed by western blot with 15090-1-AP (ALDH3A2 antibody) at dilution of 1:5000 incubated at room temperature for 1.5 hours.



IP Result of anti-ALDH3A2 (IP:15090-1-AP, 4ug; Detection:15090-1-AP 1:1000) with HEK-293 cells lysate 3000ug.



1x10⁶ HeLa cells were stained with 0.2ug ALDH3A2 antibody (15090-1-AP, red) and control antibody (blue). Fixed with 90% MeOH blocked with 3% BSA (30 min). Alexa Fluor 488-conjugated AffiniPure Goat Anti-Rabbit IgG(H+L) with dilution 1:1000.