

À des fins de recherche uniquement

# Anticorps Polyclonal de lapin anti-SCML1



Numéro de catalogue: 15093-1-AP

## Informations de base

Numéro de catalogue:  
15093-1-AP

Taille:  
150ul, Concentration: 160 µg/ml by  
Bradford method using BSA as the  
standard;

Hôte:  
Lapin

Isotype:  
IgG

Immunogen Catalog Number:  
AG5107

Numéro d'acquisition GenBank:  
BC026159

Identification du gène (NCBI):  
6322

Nom complet:  
sex comb on midleg-like 1  
(Drosophila)

MW calculé  
37 kDa

MW observés:  
23 kDa 34kDa

Méthode de purification:  
Purification par affinité contre  
l'antigène

Dilutions recommandées:  
WB 1:500-1:1000  
IF 1:10-1:100

## Applications

Applications testées:  
IF, WB, ELISA

Spécificité de l'espèce:  
Humain, souris

Contrôles positifs:

WB : cellules A549, cellules HepG2, tissu hépatique de  
souris

IF : cellules HepG2,

## Informations générales

Sex comb on midleg-like 1 (SCML1) is a meiosis-specific protein and is an essential component of the meiotic dense body. SCML1 is preferentially expressed in germ stem cells of testis, therefore likely involved in spermatogenesis.

## Stockage

Stockage:

Stocker à -20°C. Stable pendant un an après l'expédition.

Tampon de stockage:

PBS avec azoture de sodium à 0,02 % et glycérol à 50 % pH 7,3

L'aliquotage n'est pas nécessaire pour le stockage à -20C

\*\*\* Les 20ul contiennent 0,1% de BSA.

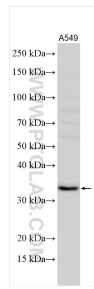
For technical support and original validation data for this product please contact:

T: 1 (888) 4PTGLAB (1-888-478-4522) (toll free  
in USA), or 1(312) 455-8498 (outside USA)

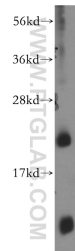
E: [proteintech@ptglab.com](mailto:proteintech@ptglab.com)  
W: [ptglab.com](http://ptglab.com)

This product is exclusively available under Proteintech Group brand and is not available to purchase from any other manufacturer.

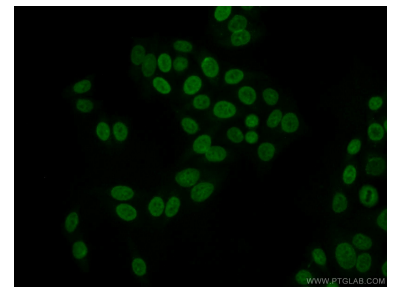
## Données de validation sélectionnées



A549 cells were subjected to SDS PAGE followed by western blot with 15093-1-AP (SCML1 antibody) at dilution of 1:500 incubated at room temperature for 1.5 hours.



HepG2 cells were subjected to SDS PAGE followed by western blot with 15093-1-AP (SCML1 antibody) at dilution of 1:400 incubated at room temperature for 1.5 hours.



Immunofluorescent analysis of HepG2 cells using 15093-1-AP (SCML1 antibody) at dilution of 1:25 and Alexa Fluor 488-conjugated AffiniPure Goat Anti-Rabbit IgG(H+L).