

À des fins de recherche uniquement

Anticorps Polyclonal de lapin anti-NAGA



Numéro de catalogue: 15096-1-AP

1 Publications

Informations de base

Numéro de catalogue: 15096-1-AP	Numéro d'acquisition GenBank: BC000095	Méthode de purification: Purification par affinité contre l'antigène
Taille: 150ul, Concentration: 133 µg/ml by Nanodrop and 133 µg/ml by Bradford method using BSA as the standard;	Identification du gène (NCBI): 4668	Dilutions recommandées: WB 1:1000-1:4000 IHC 1:20-1:200 IF 1:20-1:200
Hôte: Lapin	Nom complet: N-acetylgalactosaminidase, alpha-	
Isotype: IgG	MW calculé 47 kDa	
Immunogen Catalog Number: AG7172	MW observés: 48 kDa, 60-70 kDa	

Applications

Applications testées: IF, IHC, WB, ELISA	Contrôles positifs: WB : cellules HeLa, cellules U2OS IHC : tissu placentaire humain, IF : cellules HeLa,
Demandes citées: WB	
Spécificité de l'espèce: Humain, rat, souris	
Espèces citées: Humain	
Remarque-IHC: il est suggéré de démasquer l'antigène avec un tampon de TE buffer pH 9,0; (*) A défaut, 'le démasquage de l'antigène peut être 'effectué avec un tampon citrate pH 6,0.	

Informations générales

NAGA belongs to the glycosyl hydrolase 27 family. It removes terminal alpha-N-acetylgalactosamine residues from glycolipids and glycopeptides. It is required for the breakdown of glycolipids. Biosynthetic studies performed with cultured fibroblasts indicated that the human enzyme was synthesized as a 65 kDa glycosylated precursor which was processed to a mature 48-kDa lysosomal form; both the precursor and mature forms had high mannose type oligosaccharide chains, but only the precursor's mannose residues were phosphorylated. 90-117 kDa is a homodimer of NAGA.

Publications notables

Autrice	Pubmed ID	Journal	Application
Yong Huang	32938225	Am J Physiol Cell Physiol	WB

Stockage

Stockage:
Stocker à -20°C. Stable pendant un an après l'expédition.
Tampon de stockage:
PBS avec azoture de sodium à 0,02 % et glycérol à 50 % pH 7,3
L'aliquotage n'est pas nécessaire pour le stockage à -20C

*** Les 20ul contiennent 0,1% de BSA.

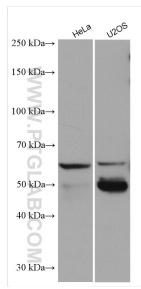
For technical support and original validation data for this product please contact:

T: 1 (888) 4PTGLAB (1-888-478-4522) (toll free in USA), or 1(312) 455-8498 (outside USA)

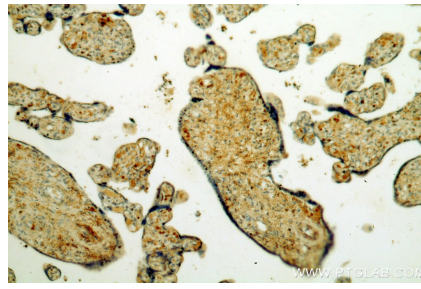
E: proteintech@ptglab.com
W: ptglab.com

This product is exclusively available under Proteintech Group brand and is not available to purchase from any other manufacturer.

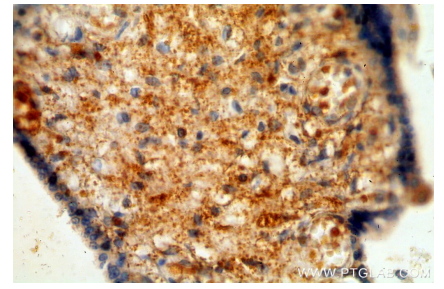
Données de validation sélectionnées



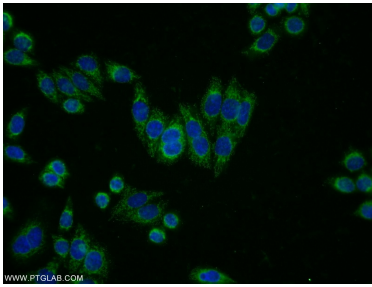
Various lysates were subjected to SDS PAGE followed by western blot with 15096-1-AP (NAGA antibody) at dilution of 1:2000 incubated at room temperature for 1.5 hours.



Immunohistochemical analysis of paraffin-embedded human placenta using 15096-1-AP (NAGA antibody) at dilution of 1:100 (under 10x lens).



Immunohistochemical analysis of paraffin-embedded human placenta using 15096-1-AP (NAGA antibody) at dilution of 1:100 (under 40x lens).



Immunofluorescent analysis of HeLa cells using 15096-1-AP (NAGA antibody) at dilution of 1:50 and Alexa Fluor 488-conjugated AffiniPure Goat Anti-Rabbit IgG(H+L).