

À des fins de recherche uniquement

Anticorps Polyclonal de lapin anti-IL-10RB



Numéro de catalogue: 15102-1-AP

3 Publications

Informations de base

Numéro de catalogue:

15102-1-AP

Taille:

150ul , Concentration: 450 µg/ml by Nanodrop and 267 µg/ml by Bradford method using BSA as the standard;

Hôte:

Lapin

Isotype:

IgG

Immunogen Catalog Number:

AG7445

Numéro d'acquisition GenBank:

BC001903

Identification du gène (NCBI):

3588

Nom complet:

interleukin 10 receptor, beta

MW calculé

37 kDa

MW observés:

42-45 kDa

Méthode de purification:

Purification par affinité contre l'antigène

Dilutions recommandées:

WB 1:300-1:1000

Applications

Applications testées:

WB, ELISA

Demandes citées:

WB

Spécificité de l'espèce:

Humain, rat, souris

Espèces citées:

Humain, souris

Contrôles positifs:

WB : tissu de muscle squelettique de rat, cellules

Jurkat, tissu de muscle squelettique de souris

Informations générales

Interleukin-10 (IL-10) is an anti-inflammatory cytokine that plays a critical role in maintaining immune system balance. IL-10 signals through a receptor complex consisting of two molecules of the IL-10R alpha-chain (IL-10RA) and two molecules of the accessory IL-10R beta-chain (IL-10RB) (PMID: 22236434). IL-10RA and IL-10RB are members of the type II cytokine receptor family. IL-10RB, also known as IL-10R2 or CDw210b, is the signaling subunit of the IL-10R complex and is constitutively expressed in a variety of cell types (PMID: 24507158). Binding of IL-10 to the IL-10R complex leads to JAK1- and TYK2-mediated phosphorylation of STAT3 (PMID: 11244051; 10433356). IL-10RB is also shared by several other cytokines, including IL22, IL-26, IFN-γ, IL-28A/B and IL29 (PMID: 22236434).

Publications notables

Autrice	Pubmed ID	Journal	Application
Yang Che	34015450	Biochim Biophys Acta Mol Basis Dis	WB
Shuyue Luo	35811529	J Alzheimers Dis	WB
Mai Yamamoto	37319277	PLoS One	WB

Stockage

Stockage:

Stocker à -20°C. Stable pendant un an après l'expédition.

Tampon de stockage:

PBS avec azoture de sodium à 0,02 % et glycérol à 50 % pH 7,3

L'aliquotage n'est pas nécessaire pour le stockage à -20C

*** Les 20ul contiennent 0,1% de BSA.

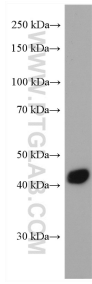
For technical support and original validation data for this product please contact:

T: 1 (888) 4PTGLAB (1-888-478-4522) (toll free in USA), or 1(312) 455-8498 (outside USA)

E: proteintech@ptglab.com
W: ptglab.com

This product is exclusively available under Proteintech Group brand and is not available to purchase from any other manufacturer.

Données de validation sélectionnées



rat skeletal muscle tissue were subjected to SDS PAGE followed by western blot with 15102-1-AP (IL10RB antibody) at dilution of 1:600 incubated at room temperature for 1.5 hours.