

À des fins de recherche uniquement

Anticorps Polyclonal de lapin anti-CAPRIN1



Numéro de catalogue: 15112-1-AP

Phare

56 Publications

Informations de base

Numéro de catalogue:

15112-1-AP

Taille:

150ul, Concentration: 600 µg/ml by Nanodrop;

Hôte:

Lapin

Isotype:

IgG

Immunogen Catalog Number:

AG7099

Numéro d'acquisition GenBank:

BC001731

Identification du gène (NCBI):

4076

Nom complet:

cell cycle associated protein 1

MW calculé

78 kDa

MW observés:

116 kDa

Méthode de purification:

Purification par affinité contre l'antigène

Dilutions recommandées:

WB 1:5000-1:50000

IP 0.5-4.0 µg for IP and 1:2000-1:10000 for WB

IHC 1:50-1:500

IF 1:200-1:800

Applications

Applications testées:

FC, IF, IHC, IP, WB, ELISA

Demandes citées:

IF, IHC, IP, RIP, WB

Spécificité de l'espèce:

Humain, rat, souris

Espèces citées:

Humain, porc, rat, souris

Remarque-IHC: il est suggéré de démasquer l'antigène avec un tampon de TE buffer pH 9,0; (*) À défaut, le démasquage de l'antigène peut être effectué avec un tampon citrate pH 6,0.

Contrôles positifs:

WB : cellules HEK-293, cellules HEK-293T, cellules HeLa, cellules Jurkat, cellules NIH/3T3, tissu cérébral de rat, tissu cérébral de souris

IP : cellules HeLa,

IHC : tissu de cancer du sein humain, tissu de cancer de la prostate humaine, tissu testiculaire humaine

IF : cellules HeLa, cellules HepG2, cellules OC2, cryosections de cochlée

Informations générales

CAPRIN1 (Caprin-1) is a cytoplasmic phosphoprotein which may regulate the transport and translation of mRNAs of proteins involved in synaptic plasticity in neurons and cell proliferation and migration in multiple cell types. Its levels, except in the brain, are tightly correlated with cellular proliferation. Suppression of expression of human Caprin-1 resulted in slowing of the proliferation rate, which suggests its essential for normal cellular proliferation.

Publications notables

Autrice	Pubmed ID	Journal	Application
Colin T Sheehan	36183834	J Biol Chem	WB
Silvia De Rubeis	24050404	Neuron	WB, IP
Brian D Freibaum	33502444	J Cell Biol	IF

Stockage

Stockage:

Stocker à -20°C. Stable pendant un an après l'expédition.

Tampon de stockage:

PBS avec azoture de sodium à 0,02 % et glycérol à 50 % pH 7,3

L'aliquotage n'est pas nécessaire pour le stockage à -20C

*** Les 20ul contiennent 0,1% de BSA.

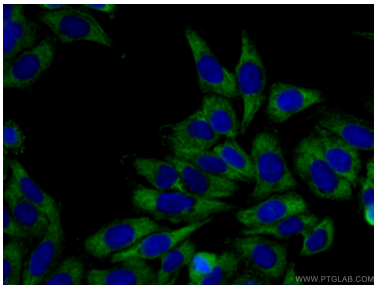
For technical support and original validation data for this product please contact:

T: 1 (888) 4PTGLAB (1-888-478-4522) (toll free in USA), or 1(312) 455-8498 (outside USA)

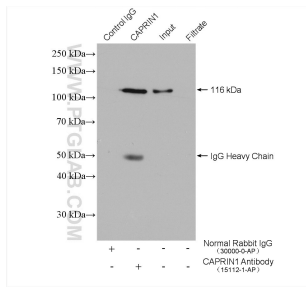
E: proteintech@ptglab.com
W: ptglab.com

This product is exclusively available under Proteintech Group brand and is not available to purchase from any other manufacturer.

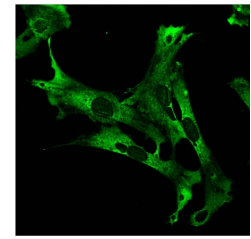
Données de validation sélectionnées



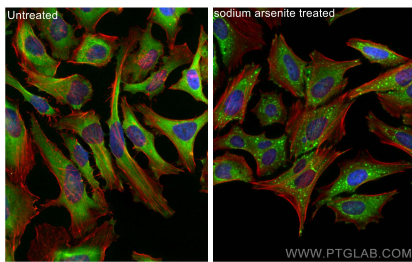
Immunofluorescent analysis of (-20°C Ethanol) fixed HepG2 cells using 15112-1-AP (CAPRIN1 antibody) at dilution of 1:50 and CoraLite488-Conjugated AffiniPure Goat Anti-Rabbit IgG(H+L).



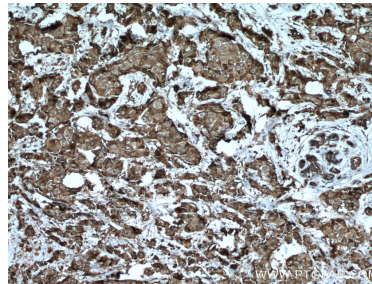
IP result of anti-CAPRIN1 (IP:15112-1-AP, 4ug; Detection:15112-1-AP 1:5000) with HeLa cells lysate 1600 ug.



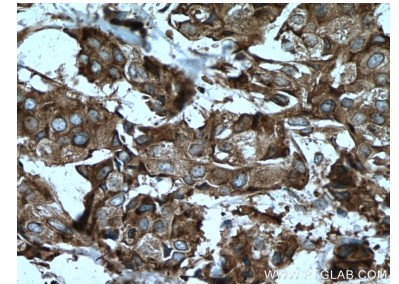
IF result of anti-CAPRIN1 (15112-1-AP, 1:200) with OC2 cells by Dr. Emily Towers.



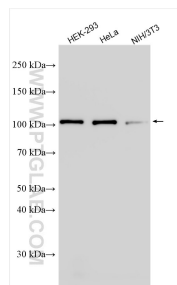
Immunofluorescent analysis of (4% PFA) fixed sodium arsenite treated HeLa cells using CAPRIN1 antibody (15112-1-AP) at dilution of 1:200 and CoraLite®488-Conjugated AffiniPure Goat Anti-Rabbit IgG(H+L), CL594-Phalloidin (red).



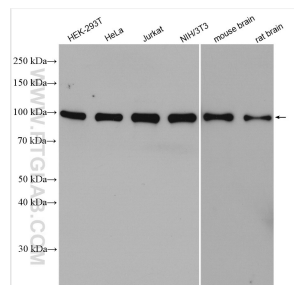
Immunohistochemical analysis of paraffin-embedded human breast cancer tissue slide using 15112-1-AP (CAPRIN1 antibody) at dilution of 1:200 (under 10x lens. Heat mediated antigen retrieval with Tris-EDTA buffer (pH 9.0).



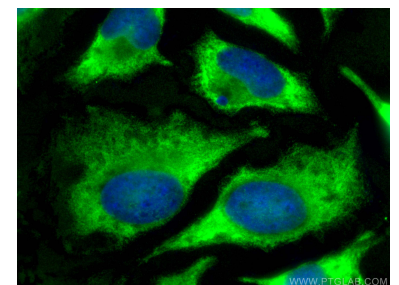
Immunohistochemical analysis of paraffin-embedded human breast cancer tissue slide using 15112-1-AP (CAPRIN1 antibody) at dilution of 1:200 (under 40x lens. Heat mediated antigen retrieval with Tris-EDTA buffer (pH 9.0).



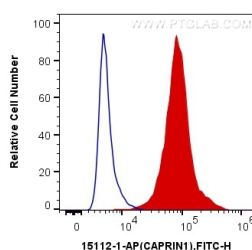
Various lysates were subjected to SDS PAGE followed by western blot with 15112-1-AP (CAPRIN1 antibody) at dilution of 1:25000 incubated at room temperature for 1.5 hours.



Various lysates were subjected to SDS PAGE followed by western blot with 15112-1-AP (CAPRIN1 antibody) at dilution of 1:10000 incubated at room temperature for 1.5 hours.



Immunofluorescent analysis of (-20°C Methanol) fixed HeLa cells using CAPRIN1 antibody (15112-1-AP) at dilution of 1:400 and CoraLite®488-Conjugated AffiniPure Goat Anti-Rabbit IgG(H+L).



1X10⁶ NIH/3T3 cells were intracellularly stained with 0.2 ug Anti-Human CAPRN1 (15112-1-AP) and CoraLite®488-Conjugated AffiniPure Goat Anti-Rabbit IgG(H+L) at dilution 1:1000 (red), or 0.2 ug Control Antibody. Cells were fixed with 4% PFA and permeabilized with Flow Cytometry Perm Buffer (PF00011-C).