

À des fins de recherche uniquement

# Anticorps Polyclonal de lapin anti-GSK3B



Numéro de catalogue: 15113-1-AP

Phare

8 Publications

## Informations de base

Numéro de catalogue:

15113-1-AP

Taille:

150ul, Concentration: 200 µg/ml by Nanodrop and 200 µg/ml by Bradford method using BSA as the standard;

Hôte:

Lapin

Isotype:

IgG

Immunogen Catalog Number:

AG7101

Numéro d'acquisition GenBank:

BC000251

Identification du gène (NCBI):

2932

Nom complet:

glycogen synthase kinase 3 beta

MW calculé

433 aa, 48 kDa

MW observés:

55-60 kDa

Méthode de purification:

Purification par affinité contre l'antigène

Dilutions recommandées:

WB 1:500-1:2000

IP 0.5-4.0 ug for IP and 1:500-1:1000 for WB

IHC 1:20-1:200

## Applications

Applications testées:

IHC, IP, WB, ELISA

Demandes citées:

WB

Spécificité de l'espèce:

Humain, rat, souris

Espèces citées:

Humain, rat, souris

**Remarque-IHC: il est suggéré de démasquer l'antigène avec un tampon de TE buffer pH 9,0; (\*) À défaut, 'le démasquage de l'antigène peut être 'effectué avec un tampon citrate pH 6,0.**

Contrôles positifs:

WB : tissu ovarien de souris, cellules A549, cellules HEK-293, cellules HeLa

IP : tissu cardiaque de souris,

IHC : tissu testiculaire humain,

## Informations générales

Glycogen synthase kinase-3 (GSK3) is a proline-directed serine-threonine kinase that was initially identified as a phosphorylating and inactivating glycogen synthase. GSK3B is involved in energy metabolism, neuronal cell development, and body pattern formation. In skeletal muscle, it contributes to INS regulation of glycogen synthesis by phosphorylating and inhibiting GYS1 activity and hence glycogen synthesis. Researches showed that the crystal structure of human GSK3B, expressed in insect cells, at 2.8-angstrom resolution. This antibody recognize the 2 isoforms of GSK3B.

## Publications notables

Autrice	Pubmed ID	Journal	Application
Meizhong Peng	36237833	Int J Endocrinol	WB
Xichun Qin	34688627	Microvasc Res	WB
Jun-Liang Pu	34024736	Hepatobiliary Pancreat Dis Int	WB

## Stockage

Stockage:

Stocker à -20°C. Stable pendant un an après l'expédition.

Tampon de stockage:

PBS avec azoture de sodium à 0,02 % et glycérol à 50 % pH 7,3

L'aliquotage n'est pas nécessaire pour le stockage à -20C

\*\*\* Les 20ul contiennent 0,1% de BSA.

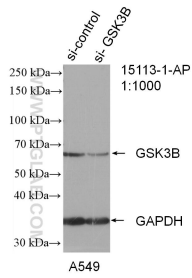
For technical support and original validation data for this product please contact:

T: 1 (888) 4PTGLAB (1-888-478-4522) (toll free in USA), or 1(312) 455-8498 (outside USA)

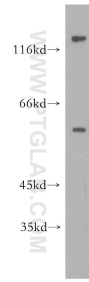
E: proteintech@ptglab.com  
W: ptglab.com

This product is exclusively available under Proteintech Group brand and is not available to purchase from any other manufacturer.

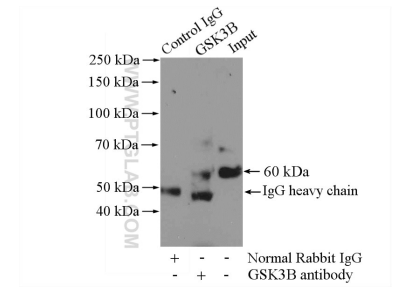
## Données de validation sélectionnées



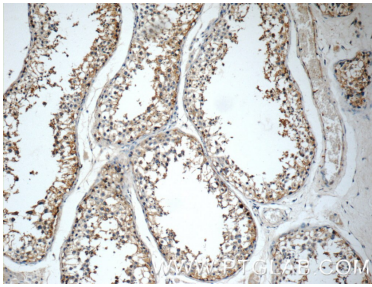
WB result of GSK3B antibody (15113-1-AP; 1:1000; incubated at room temperature for 1.5 hours) with sh-Control and sh-GSK3B transfected A549 cells.



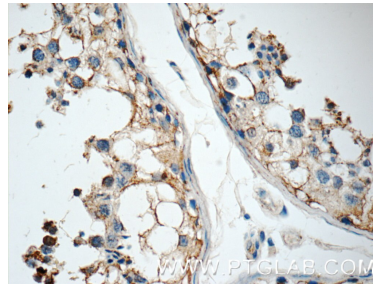
mouse ovary tissue were subjected to SDS PAGE followed by western blot with 15113-1-AP (GSK3B antibody) at dilution of 1:300 incubated at room temperature for 1.5 hours.



IP Result of anti-GSK3B (IP:15113-1-AP, 4ug; Detection:15113-1-AP 1:500) with mouse heart tissue lysate 4000ug.



Immunohistochemical analysis of paraffin-embedded human testis tissue slide using 15113-1-AP (GSK3B Antibody) at dilution of 1:50 (under 10x lens).



Immunohistochemical analysis of paraffin-embedded human testis tissue slide using 15113-1-AP (GSK3B Antibody) at dilution of 1:50 (under 40x lens).