

À des fins de recherche uniquement

Anticorps Polyclonal de lapin anti-SCAMP2



Numéro de catalogue: 15119-1-AP

1 Publications

Informations de base

Numéro de catalogue:

15119-1-AP

Taille:

150ul, Concentration: 600 µg/ml by Nanodrop and 253 µg/ml by Bradford method using BSA as the standard;

Hôte:

Lapin

Isotype:

IgG

Immunogen Catalog Number:

AG7190

Numéro d'acquisition GenBank:

BC001376

Identification du gène (NCBI):

10066

Nom complet:

secretory carrier membrane protein 2

MW calculé

37 kDa

MW observés:

39 kDa

Méthode de purification:

Purification par affinité contre l'antigène

Dilutions recommandées:

WB 1:500-1:3000

IP 0.5-4.0 ug for IP and 1:500-1:1000 for WB

IHC 1:20-1:200

IF 1:10-1:100

Applications

Applications testées:

FC, IF, IHC, IP, WB, ELISA

Demandes citées:

WB

Spécificité de l'espèce:

Humain, rat, souris

Espèces citées:

Humain

Remarque-IHC: il est suggéré de démasquer l'antigène avec un tampon de TE buffer pH 9,0; (*) A défaut, le démasquage de l'antigène peut être effectué avec un tampon citrate pH 6,0.

Contrôles positifs:

WB : cellules HepG2, cellules HeLa, tissu hépatique humain, tissu pulmonaire de souris

IP : cellules HepG2,

IHC : tissu de cancer du pancréas humain,

IF : cellules HEK-293,

Informations générales

SCAMP2 functions in post-Golgi recycling pathways. It acts as a recycling carrier to the cell surface. It couples Arf6-stimulated PLD activity to exocytosis and links this process to formation of fusion pores. SCAMP2 is marker for secretory vesicles and tobacco BY-2 cells as a model system. The MW of SCAMP2 is 36-39 kDa with modification.

Publications notables

Autrice	Pubmed ID	Journal	Application
Feiyu Mao	33493138	Aging (Albany NY)	WB

Stockage

Stockage:

Stocker à -20°C. Stable pendant un an après l'expédition.

Tampon de stockage:

PBS avec azoture de sodium à 0,02 % et glycérol à 50 % pH 7,3

L'aliquotage n'est pas nécessaire pour le stockage à -20C

*** Les 20ul contiennent 0,1% de BSA.

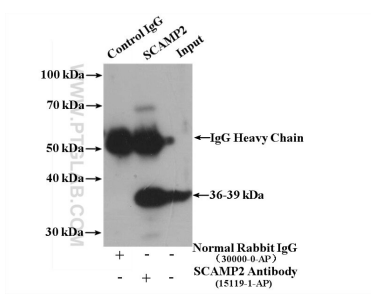
For technical support and original validation data for this product please contact:

T: 1 (888) 4PTGLAB (1-888-478-4522) (toll free in USA), or 1(312) 455-8498 (outside USA)

E: proteintech@ptglab.com
W: ptglab.com

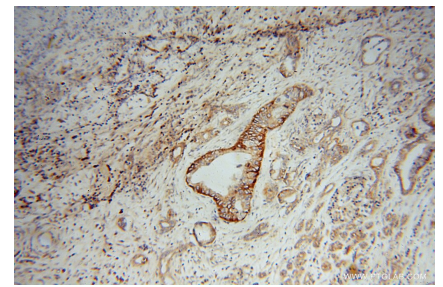
This product is exclusively available under Proteintech Group brand and is not available to purchase from any other manufacturer.

Données de validation sélectionnées

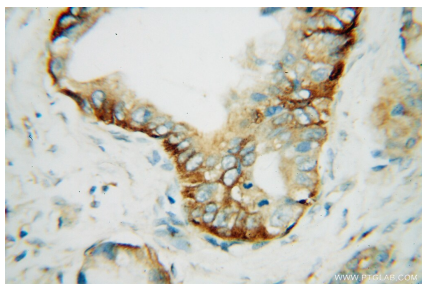


IP result of anti-SCAMP2 (IP:15119-1-AP, 4 μ g; Detection:15119-1-AP 1:500) with HepG2 cells lysate 3300 μ g.

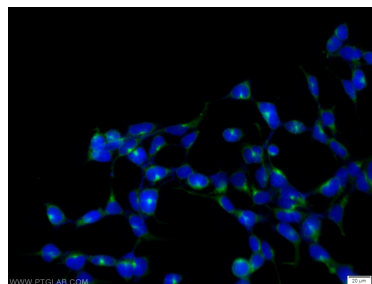
HepG2 cells were subjected to SDS PAGE followed by western blot with 15119-1-AP (SCAMP2 antibody) at dilution of 1:500 incubated at room temperature for 1.5 hours.



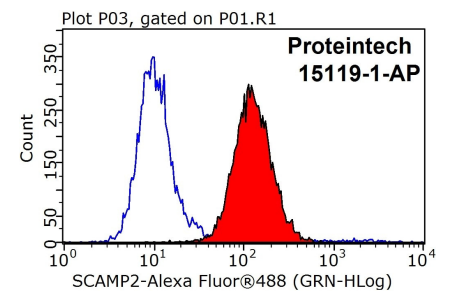
Immunohistochemical analysis of paraffin-embedded human pancreas cancer using 15119-1-AP (SCAMP2 antibody) at dilution of 1:100 (under 10x lens).



Immunohistochemical analysis of paraffin-embedded human pancreas cancer using 15119-1-AP (SCAMP2 antibody) at dilution of 1:100 (under 40x lens).



Immunofluorescent analysis of HEK-293 cells using 15119-1-AP (SCAMP2 antibody) at dilution of 1:25 and Alexa Fluor 488-conjugated AffiniPure Goat Anti-Rabbit IgG(H+L).



1X10⁶ HEK-293 cells were stained with 0.2 μ g SCAMP2 antibody (15119-1-AP, red) and control antibody (blue). Fixed with 90% MeOH blocked with 3% BSA (30 min). Alexa Fluor 488-conjugated AffiniPure Goat Anti-Rabbit IgG(H+L) with dilution 1:1000.