

À des fins de recherche uniquement

Anticorps Polyclonal de lapin anti-GSTO1



Numéro de catalogue: 15124-1-AP

Phare

10 Publications

Informations de base

Numéro de catalogue:

15124-1-AP

Taille:

150ul, Concentration: 450 µg/ml by Nanodrop and 300 µg/ml by Bradford method using BSA as the standard;

Hôte:

Lapin

Isotype:

IgG

Immunogen Catalog Number:

AG7199

Numéro d'acquisition GenBank:

BC000127

Identification du gène (NCBI):

9446

Nom complet:

glutathione S-transferase omega 1

MW calculé

28 kDa

MW observés:

27-30 kDa

Méthode de purification:

Purification par affinité contre l'antigène

Dilutions recommandées:

WB 1:1000-1:4000

IP 0.5-4.0 ug for IP and 1:500-1:1000 for WB

IHC 1:50-1:500

IF 1:50-1:500

Applications

Applications testées:

IF, IHC, IP, WB, ELISA

Demandes citées:

IF, WB

Spécificité de l'espèce:

Humain, rat

Espèces citées:

Humain, porc, rat, souris

Remarque-IHC: il est suggéré de démasquer l'antigène avec un tampon de TE buffer pH 9,0; (*) A défaut, 'le démasquage de l'antigène peut être effectué avec un tampon citrate pH 6,0.

Contrôles positifs:

WB : cellules HeLa, cellules Jurkat, cellules PC-3, cellules U-937, tissu cardiaque humain, tissu cérébral de rat, tissu hépatique de souris

IP : cellules Jurkat,

IHC : tissu de cancer du pancréas humain,

IF : cellules PC-3,

Informations générales

Glutathione-S-transferase omega 1 (GSTO1) belongs to a new subfamily of GSTs and is the rate limiting enzyme for biotransformation of inorganic arsenic, environmental carcinogen. Expression of GSTO1-1 was abundant in a wide range of normal tissues, particularly liver, macrophages, glial cells, and endocrine cells. Human GSTO1 assembles as a dimer. This antibody detects both monomer (27-30 kDa) and dimer forms of GSTO1 (54-64 kDa). (PMID: 21495794)

Publications notables

Autrice	Pubmed ID	Journal	Application
Dan Liu	30267739	Neurotoxicology	WB
Yuan-Chang Dai	29016672	PLoS One	WB
Xinhua Hou	32480263	Food Chem	WB

Stockage

Stockage:

Stocker à -20°C. Stable pendant un an après l'expédition.

Tampon de stockage:

PBS avec azoture de sodium à 0,02 % et glycérol à 50 % pH 7,3

L'aliquotage n'est pas nécessaire pour le stockage à -20C

*** Les 20ul contiennent 0,1% de BSA.

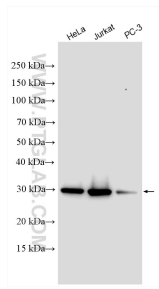
For technical support and original validation data for this product please contact:

T: 1 (888) 4PTGLAB (1-888-478-4522) (toll free in USA), or 1(312) 455-8498 (outside USA)

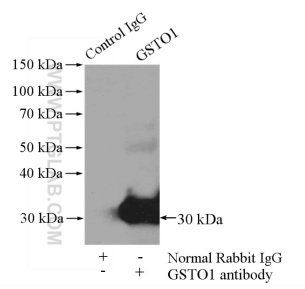
E: proteintech@ptglab.com
W: ptglab.com

This product is exclusively available under Proteintech Group brand and is not available to purchase from any other manufacturer.

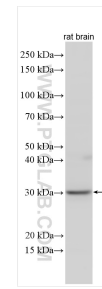
Données de validation sélectionnées



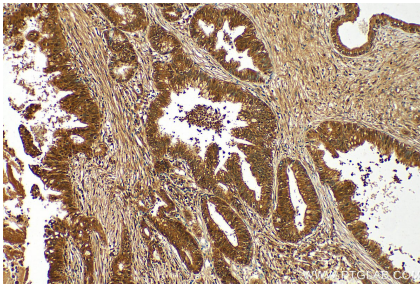
Various lysates were subjected to SDS PAGE followed by western blot with 15124-1-AP (GSTO1 antibody) at dilution of 1:2000 incubated at room temperature for 1.5 hours.



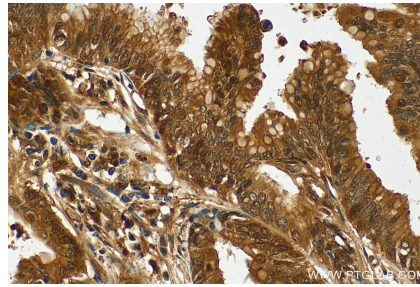
IP Result of anti-GSTO1 (IP:15124-1-AP, 4ug; Detection:15124-1-AP 1:500) with Jurkat cells lysate 4000ug.



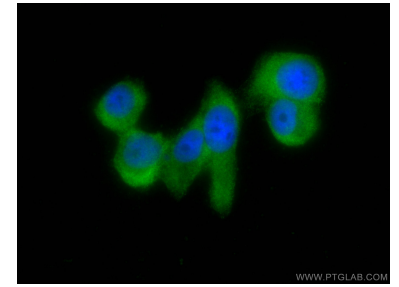
rat brain tissue were subjected to SDS PAGE followed by western blot with 15124-1-AP (GSTO1 antibody) at dilution of 1:1000 incubated at room temperature for 1.5 hours.



Immunohistochemical analysis of paraffin-embedded human pancreas cancer tissue slide using 15124-1-AP (GSTO1 antibody) at dilution of 1:200 (under 10x lens). Heat mediated antigen retrieval with Tris-EDTA buffer (pH 9.0).



Immunohistochemical analysis of paraffin-embedded human pancreas cancer tissue slide using 15124-1-AP (GSTO1 antibody) at dilution of 1:200 (under 40x lens). Heat mediated antigen retrieval with Tris-EDTA buffer (pH 9.0).



Immunofluorescent analysis of (-20°C Ethanol) fixed PC-3 cells using GSTO1 antibody (15124-1-AP) at dilution of 1:200 and CoraLite®488-Conjugated AffiniPure Goat Anti-Rabbit IgG(H+L).