

À des fins de recherche uniquement

Anticorps Polyclonal de lapin anti-GP73/GOLPH2



Numéro de catalogue: 15126-1-AP

Phare

10 Publications

Informations de base

Numéro de catalogue:

15126-1-AP

Numéro d'acquisition GenBank:

BC001740

Méthode de purification:

Purification par affinité contre l'antigène

Taille:

150ul, Concentration: 1000 µg/ml by Nanodrop;

Identification du gène (NCBI):

51280

Dilutions recommandées:

WB 1:1000-1:6000

Hôte:

Lapin

Nom complet:

golgi membrane protein 1

IP 0.5-4.0 ug for IP and 1:500-1:2000 for WB

Isotype:

IgG

MW calculé

45 kDa

IF 1:200-1:800

Immunogen Catalog Number:

AG7207

MW observés:

70-75 kDa

Applications

Applications testées:

FC, IF, IP, WB, ELISA

Contrôles positifs:

WB : cellules LNCaP, cellules HepG2, cellules HuH-7, cellules MDA-MB-231

Demandes citées:

IF, IHC, WB

IP : cellules HeLa,

Spécificité de l'espèce:

Humain

IF : cellules HeLa,

Espèces citées:

Humain, souris

Informations générales

Golgi phosphoprotein 2 (GOLPH2, also known as GP73 or GOLM1) is a resident Golgi type-II membrane protein. It is predominantly expressed in the epithelial cells of many human tissues. GOLPH2 traffics through endosomes and can be secreted into the circulation. Its expression is upregulated in a number of tumors and GOLPH2 could be a promising serum marker for hepatocellular carcinoma. We got 70-75 kDa in western blotting due to phosphorylation.

Publications notables

Autrice	Pubmed ID	Journal	Application
Yan Lin	36211823	Oxid Med Cell Longev	IHC
Xuewu Zhang	27697522	Biochem Biophys Res Commun	WB,IF
T Wang	24720891	Curr Alzheimer Res	

Stockage

Stockage:

Stocker à -20°C. Stable pendant un an après l'expédition.

Tampon de stockage:

PBS avec azoture de sodium à 0,02 % et glycérol à 50 % pH 7,3

L'aliquotage n'est pas nécessaire pour le stockage à -20C

*** Les 20ul contiennent 0,1% de BSA.

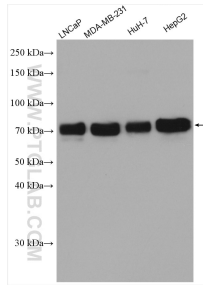
For technical support and original validation data for this product please contact:

T: 1 (888) 4PTGLAB (1-888-478-4522) (toll free in USA), or 1(312) 455-8498 (outside USA)

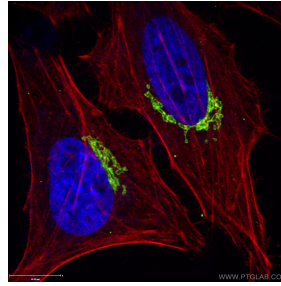
E: proteintech@ptglab.com
W: ptglab.com

This product is exclusively available under Proteintech Group brand and is not available to purchase from any other manufacturer.

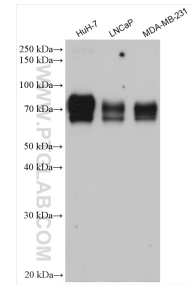
Données de validation sélectionnées



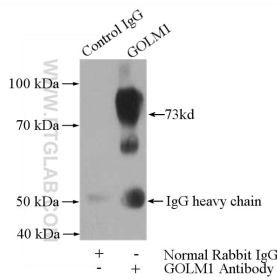
Various lysates were subjected to SDS PAGE followed by western blot with 15126-1-AP (GP73/GOLPH2 antibody) at dilution of 1:4000 incubated at room temperature for 1.5 hours.



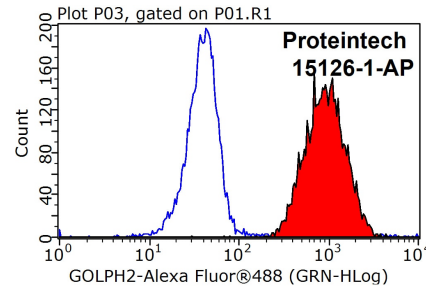
Immunofluorescent analysis of (4% PFA) fixed HeLa cells using 15126-1-AP (GP73/GOLPH2 antibody), at dilution of 1:400 and CoraLite@488-Conjugated AffiniPure Goat Anti-Rabbit IgG(H+L). The cytoskeleton and nuclei were stained with CL594-phalloidin and DAPI, respectively.



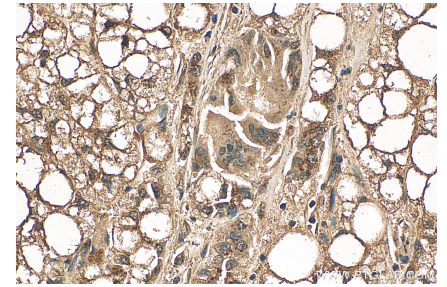
Various lysates were subjected to SDS PAGE followed by western blot with 15126-1-AP (GP73/GOLPH2 antibody) at dilution of 1:20000 incubated at room temperature for 1.5 hours.



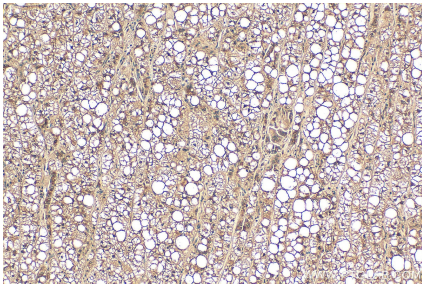
IP Result of anti-GP73/GOLPH2 (IP:15126-1-AP, 4ug; Detection:15126-1-AP 1:1000) with HeLa cells lysate 2800ug.



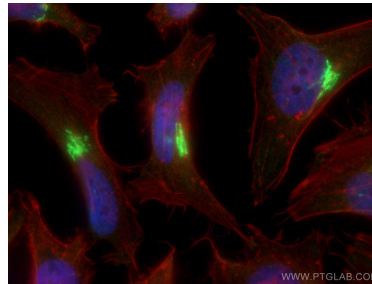
1X10⁶ HeLa cells were stained with 0.2ug GP73/GOLPH2 antibody (15126-1-AP, red) and control antibody (blue). Fixed with 90% MeOH blocked with 3% BSA (30 min). Alexa Fluor 488-conjugated AffiniPure Goat Anti-Rabbit IgG(H+L) with dilution 1:1000.



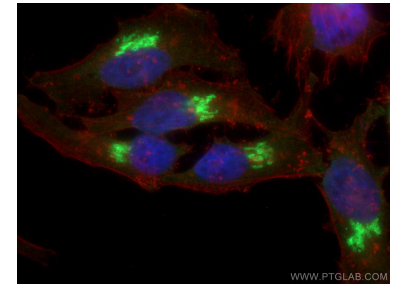
Immunohistochemical analysis of paraffin-embedded human liver cancer tissue slide using 15126-1-AP (GP73/GOLPH2 antibody) at dilution of 1:200 (under 40x lens). Heat mediated antigen retrieval with Tris-EDTA buffer (pH 9.0).



Immunohistochemical analysis of paraffin-embedded human liver cancer tissue slide using 15126-1-AP (GP73/GOLPH2 antibody) at dilution of 1:200 (under 10x lens). Heat mediated antigen retrieval with Tris-EDTA buffer (pH 9.0).



Immunofluorescent analysis of (4% PFA) fixed HeLa cells using GP73/GOLPH2 antibody (15126-1-AP) at dilution of 1:1800 and CoraLite@488-Conjugated AffiniPure Goat Anti-Rabbit IgG(H+L), CL594-Phalloidin (red).



Immunofluorescent analysis of (4% PFA) fixed HeLa cells using GP73/GOLPH2 antibody (15126-1-AP) at dilution of 1:2000 and CoraLite@488-Conjugated AffiniPure Goat Anti-Rabbit IgG(H+L), CL594-Phalloidin (red).