

À des fins de recherche uniquement

# Anticorps Polyclonal de lapin anti-ALADIN



Numéro de catalogue: 15127-1-AP

Phare

1 Publications

## Informations de base

<b>Numéro de catalogue:</b> 15127-1-AP	<b>Numéro d'acquisition GenBank:</b> BC000659	<b>Méthode de purification:</b> Purification par affinité contre l'antigène
<b>Taille:</b> 150ul, Concentration: 650 µg/ml by Nanodrop and 487 µg/ml by Bradford method using BSA as the standard;	<b>Identification du gène (NCBI):</b> 8086	<b>Dilutions recommandées:</b> WB 1:1000-1:6000 IHC 1:50-1:500
<b>Hôte:</b> Lapin	<b>Nom complet:</b> achalasia, adrenocortical insufficiency, alacrimia (Allgrove, triple-A)	
<b>Isotype:</b> IgG	<b>MW calculé</b> 60 kDa	
<b>Immunogen Catalog Number:</b> AG7211	<b>MW observés:</b> 56-60 kDa	

## Applications

### Applications testées:

IHC, WB, ELISA

### Demandes citées:

IF, WB

### Spécificité de l'espèce:

Humain, singe, souris

### Espèces citées:

Humain

**Remarque-IHC: il est suggéré de démasquer l'antigène avec un tampon de TE buffer pH 9,0; (\*) A défaut, 'le démasquage de l'antigène peut être 'effectué avec un tampon citrate pH 6,0.**

### Contrôles positifs:

WB : cellules HeLa, cellules NIH/3T3, cellules SH-SY5Y

IHC : tissu de cancer de l'estomac humain,

## Informations générales

The AAAS gene product is the 60 kDa nuclear pore complex (NPC) protein alacrima-achalasia-adrenal insufficiency neurological disorder (ALADIN). AAAS mRNA and the ALADIN protein are ubiquitously expressed with predominance in the adrenal and central nervous system structures in human and rat. ALADIN, a Tryptophan-Aspartic acid (WD) repeat containing protein, was the first nuclear pore complex protein to be associated with hereditary neurodegenerative disease and the only nuclear pore complex protein to be associated with hereditary adrenal disease. ALADIN's precise function at the nuclear pore complex is unknown. Most naturally occurring AAAS mutations result in mislocalization of the abnormal ALADIN protein (mainly into the cytoplasm), implying that correct NPC targeting is vital for its function. (PMID: 23825130)

## Publications notables

Autrice	Pubmed ID	Journal	Application
Sara Carvalhal	26246606	Mol Biol Cell	WB,IF

## Stockage

### Stockage:

Stocker à -20°C. Stable pendant un an après l'expédition.

### Tampon de stockage:

PBS avec azoture de sodium à 0,02 % et glycérol à 50 % pH 7,3

L'aliquotage n'est pas nécessaire pour le stockage à -20C

\*\*\* Les 20ul contiennent 0,1% de BSA.

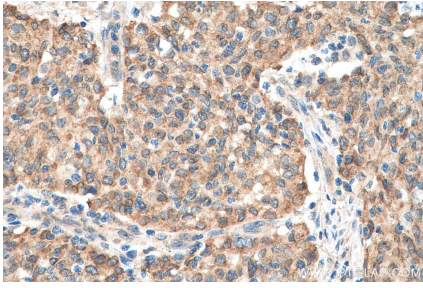
For technical support and original validation data for this product please contact:

T: 1 (888) 4PTGLAB (1-888-478-4522) (toll free in USA), or 1(312) 455-8498 (outside USA)

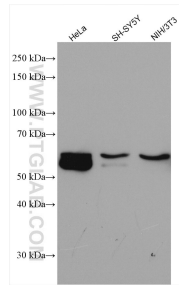
E: proteintech@ptglab.com  
W: ptglab.com

This product is exclusively available under Proteintech Group brand and is not available to purchase from any other manufacturer.

## Données de validation sélectionnées



Immunohistochemical analysis of paraffin-embedded human stomach cancer tissue slide using 15127-1-AP (ALADIN antibody) at dilution of 1:200 (under 40x lens). Heat mediated antigen retrieval with Tris-EDTA buffer (pH 9.0).



Various lysates were subjected to SDS PAGE followed by western blot with 15127-1-AP (ALADIN antibody) at dilution of 1:3000 incubated at room temperature for 1.5 hours.