

À des fins de recherche uniquement

Anticorps Polyclonal de lapin anti-ABLIM1



Numéro de catalogue: 15129-1-AP

Phare

5 Publications

Informations de base

Numéro de catalogue:

15129-1-AP

Taille:

150ul, Concentration: 600 µg/ml by Nanodrop and 440 µg/ml by Bradford method using BSA as the standard;

Hôte:

Lapin

Isotype:

IgG

Immunogen Catalog Number:

AG7258

Numéro d'acquisition GenBank:

BC002448

Identification du gène (NCBI):

3983

Nom complet:

actin binding LIM protein 1

MW calculé

88 kDa

MW observés:

48-52 kDa, 105-110 kDa

Méthode de purification:

Purification par affinité contre l'antigène

Dilutions recommandées:

WB 1:1000-1:4000

IHC 1:20-1:200

IF 1:50-1:500

Applications

Applications testées:

IF, IHC, WB, ELISA

Demandes citées:

IF, WB

Spécificité de l'espèce:

Humain, rat, souris

Espèces citées:

Humain, souris

Remarque-IHC: il est suggéré de démasquer l'antigène avec un tampon de TE buffer pH 9,0; (*) A défaut, 'le démasquage de l'antigène peut être effectué avec un tampon citrate pH 6,0.

Contrôles positifs:

WB : cellules HeLa, cellules HEK-293, cellules NCI-H1299

IHC : tissu hépatique humain,

IF : tissu de muscle squelettique de souris, cellules HEK-293

Informations générales

ABLIM1 (actin-binding LIM protein 1) is a member of the LIM-domain protein family, mediating interactions between actin filaments and cytoplasmic targets. ABLIM1 has been reported as a cell cortex protein specifically in non-erythrocytes, and is critical for the formation of dense interwoven cortical actin meshwork. Several isoforms of ABLIM1 exist due to the alternative splicing. This antibody recognized 110 kDa and 48 kDa forms of ABLIM1. The phosphorylation or binding with SUMO2 may result in higher MW (predicted MW 88 kDa).

Publications notables

Autrice	Pubmed ID	Journal	Application
Xin Dong	33061800	Int J Biol Sci	WB
Haruna Narahara	29904924	J Cell Physiol	WB
Cao Jingli J	22684256	Nat Cell Biol	WB

Stockage

Stockage:

Stocker à -20°C. Stable pendant un an après l'expédition.

Tampon de stockage:

PBS avec azoture de sodium à 0,02 % et glycérol à 50 % pH 7,3

L'aliquotage n'est pas nécessaire pour le stockage à -20C

*** Les 20ul contiennent 0,1% de BSA.

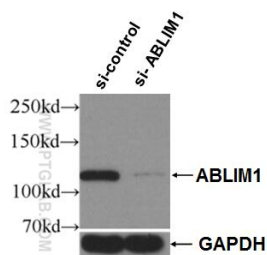
For technical support and original validation data for this product please contact:

T: 1 (888) 4PTGLAB (1-888-478-4522) (toll free in USA), or 1(312) 455-8498 (outside USA)

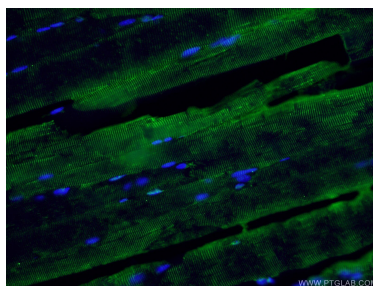
E: proteintech@ptglab.com
W: ptglab.com

This product is exclusively available under Proteintech Group brand and is not available to purchase from any other manufacturer.

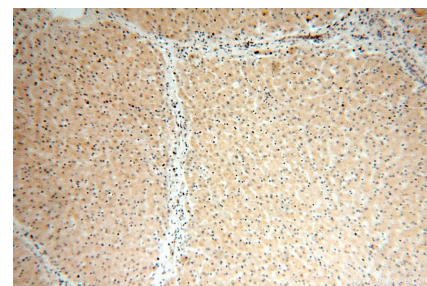
Données de validation sélectionnées



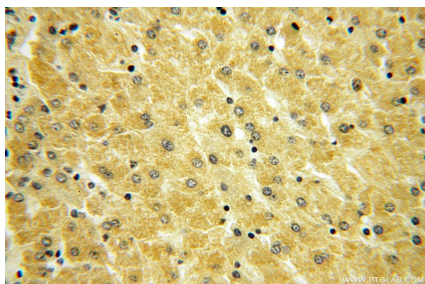
WB result of ABLIM1 antibody (15129-1-AP; 1:2000; incubated at room temperature for 1.5 hours) with sh-Control and sh-ABLIM1 transfected HeLa cells.



Immunofluorescent analysis of (4% PFA) fixed mouse skeletal muscle tissue using 15129-1-AP (ABLIM1 antibody) at dilution of 1:50 and Alexa Fluor 488-conjugated AffiniPure Goat Anti-Rabbit IgG(H+L).



Immunohistochemical analysis of paraffin-embedded human liver using 15129-1-AP (ABLIM1 antibody) at dilution of 1:100 (under 10x lens).



Immunohistochemical analysis of paraffin-embedded human liver using 15129-1-AP (ABLIM1 antibody) at dilution of 1:100 (under 40x lens).