

À des fins de recherche uniquement

Anticorps Polyclonal de lapin anti-ATG4B



Numéro de catalogue: 15131-1-AP

Phare

20 Publications

Informations de base

Numéro de catalogue:

15131-1-AP

Taille:

150ul, Concentration: 540 µg/ml by Nanodrop and 540 µg/ml by Bradford method using BSA as the standard;

Hôte:

Lapin

Isotype:

IgG

Immunogen Catalog Number:

AG7261

Numéro d'acquisition GenBank:

BC000719

Identification du gène (NCBI):

23192

Nom complet:

ATG4 autophagy related 4 homolog B (S. cerevisiae)

MW calculé

44 kDa

MW observés:

44 kDa

Méthode de purification:

Purification par affinité contre l'antigène

Dilutions recommandées:

WB 1:500-1:3000

IP 0.5-4.0 ug for IP and 1:500-1:1000 for WB

IHC 1:50-1:500

Applications

Applications testées:

IHC, IP, WB, ELISA

Demandes citées:

CoIP, IF, IHC, IP, WB

Spécificité de l'espèce:

Humain, rat, souris

Espèces citées:

Humain, rat, souris

Remarque-IHC: il est suggéré de démasquer l'antigène avec un tampon de TE buffer pH 9,0; (*) A défaut, 'le démasquage de l'antigène peut être effectué avec un tampon citrate pH 6,0.

Contrôles positifs:

WB : cellules HEK-293, cellules HeLa, cellules HepG2, cellules Jurkat

IP : tissu de muscle squelettique de souris,

IHC : tissu de cancer du pancréas humain, tissu cardiaque de souris

Informations générales

ATG4B (autophagy 4) is also named as APG4B, AUTL1, KIAA0943 and belongs to the peptidase C54 family. It is a homolog of yeast Apg4, a cysteine protease involved in autophagy and is a cytoplasmic enzyme. This protein is highly expressed in skeletal muscle, with lower expression in heart, liver, and pancreas and no expression is detected in fetal tissues by the northern blot. ATG4B is widely expressed in tumor cell lines (PMID:12446702). It has some isoforms produced by alternative splicing with molecular mass of 31-52 kDa.

Publications notables

| Autrice | Pubmed ID | Journal | Application |
|----------------------|-----------|-------------|-------------|
| Huandi Liu | 36163615 | J Med Virol | WB |
| Luis Muniz-Feliciano | 28933590 | Autophagy | WB |
| Nan Zhang | 28889000 | Cancer Lett | WB |

Stockage

Stockage:

Stocker à -20°C. Stable pendant un an après l'expédition.

Tampon de stockage:

PBS avec azoture de sodium à 0,02 % et glycérol à 50 % pH 7,3

L'aliquotage n'est pas nécessaire pour le stockage à -20°C

*** Les 20ul contiennent 0,1% de BSA.

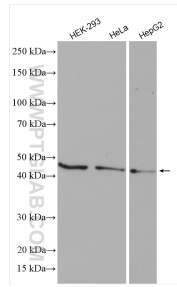
For technical support and original validation data for this product please contact:

T: 1 (888) 4PTGLAB (1-888-478-4522) (toll free in USA), or 1(312) 455-8498 (outside USA)

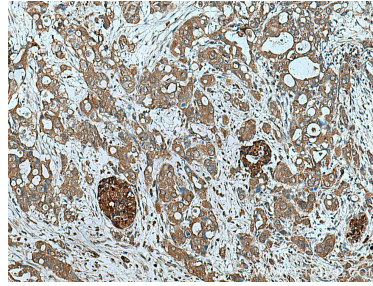
E: proteintech@ptglab.com
W: ptglab.com

This product is exclusively available under Proteintech Group brand and is not available to purchase from any other manufacturer.

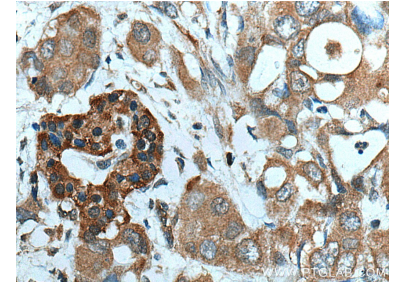
Données de validation sélectionnées



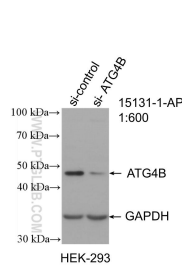
Various lysates were subjected to SDS PAGE followed by western blot with 15131-1-AP (ATG4B antibody) at dilution of 1:1500 incubated at room temperature for 1.5 hours.



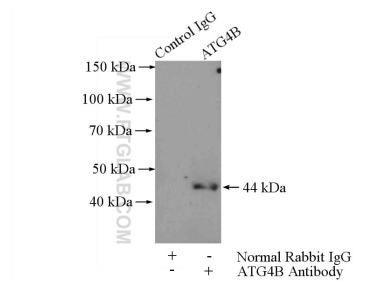
Immunohistochemical analysis of paraffin-embedded human pancreas cancer tissue slide using 15131-1-AP (ATG4B antibody) at dilution of 1:200 (under 10x lens). Heat mediated antigen retrieval with Tris-EDTA buffer (pH 9.0).



Immunohistochemical analysis of paraffin-embedded human pancreas cancer tissue slide using 15131-1-AP (ATG4B antibody) at dilution of 1:200 (under 40x lens). Heat mediated antigen retrieval with Tris-EDTA buffer (pH 9.0).



WB result of ATG4B antibody (15131-1-AP; 1:600; incubated at room temperature for 1.5 hours) with sh-Control and sh-ATG4B transfected HEK-293 cells.



IP Result of anti-ATG4B (IP:15131-1-AP, 4ug; Detection:15131-1-AP 1:500) with mouse skeletal muscle tissue lysate 3600ug.