

À des fins de recherche uniquement

Anticorps Polyclonal de lapin anti-RPAP1



Numéro de catalogue: 15138-1-AP

Phare

2 Publications

Informations de base

Numéro de catalogue:

15138-1-AP

Numéro d'acquisition GenBank:

BC000246

Méthode de purification:

Purification par affinité contre l'antigène

Taille:

150ul, Concentration: 450 µg/ml by Nanodrop and 667 µg/ml by Bradford method using BSA as the standard;

Identification du gène (NCBI):

26015

Dilutions recommandées:

WB 1:500-1:2000

Hôte:

Lapin

Nom complet:
RNA polymerase II associated protein 1

IP 0.5-4.0 ug for IP and 1:500-1:1000 for WB

Isotype:

IgG

MW calculé

153 kDa

Immunogen Catalog Number:

AG7286

MW observés:

153 kDa

Applications

Applications testées:

IP, WB, ELISA

Contrôles positifs:

WB : cellules HEK-293, cellules HeLa, tissu cérébral de souris

Demandes citées:

WB

IP : cellules HeLa,

Spécificité de l'espèce:

Humain, rat, souris

Espèces citées:

Humain, souris

Informations générales

RNA polymerase II-associated protein 1 (RPAP1) encodes a nuclear 153-kDa protein, and forms an interface between the RNA polymerase II (RNAPII) enzyme and chaperone/scaffolding protein, suggesting that it is required to connect RNA polymerase II to regulators of protein complex formation. RPAP1 is required for interaction of the RNA polymerase II complex with acetylated histone H3 and the subsequent DNA transcription.

Publications notables

Autrice	Pubmed ID	Journal	Application
Isabel Pablos	34672947	Cell Rep	WB
Cian J Lynch	29320736	Cell Rep	WB

Stockage

Stockage:

Stocker à -20°C. Stable pendant un an après l'expédition.

Tampon de stockage:

PBS avec azoture de sodium à 0,02 % et glycérol à 50 % pH 7,3

L'aliquotage n'est pas nécessaire pour le stockage à -20C

*** Les 20ul contiennent 0,1% de BSA.

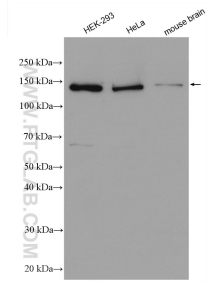
For technical support and original validation data for this product please contact:

T: 1 (888) 4PTGLAB (1-888-478-4522) (toll free in USA), or 1(312) 455-8498 (outside USA)

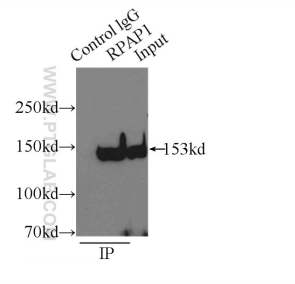
E: proteintech@ptglab.com
W: ptglab.com

This product is exclusively available under Proteintech Group brand and is not available to purchase from any other manufacturer.

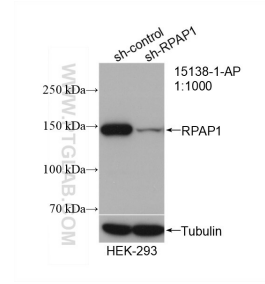
Données de validation sélectionnées



Various lysates were subjected to SDS PAGE followed by western blot with 15138-1-AP (RPAP1 antibody) at dilution of 1:1000 incubated at room temperature for 1.5 hours.



IP Result of anti-RPAP1 (IP:15138-1-AP, 3ug; Detection:15138-1-AP 1:800) with HeLa cells lysate 3000ug.



WB result of RPAP1 antibody (15138-1-AP; 1:1000; incubated at room temperature for 1.5 hours) with sh-Control and sh-RPAP1 transfected HEK-293 cells.