

À des fins de recherche uniquement

# Anticorps Polyclonal de lapin anti-S100 Beta



Numéro de catalogue: 15146-1-AP

69 Publications

## Informations de base

Numéro de catalogue: 15146-1-AP	Numéro d'acquisition GenBank: BC001766	Méthode de purification: Purification par affinité contre l'antigène
Taille: 150ul, Concentration: 1000 µg/ml by Nanodrop;	Identification du gène (NCBI): 6285	Dilutions recommandées: WB 1:500-1:1000 IHC 1:400-1:1600 IF 1:50-1:500
Hôte: Lapin	Nom complet: S100 calcium binding protein B	
Isotype: IgG	MW calculé: 11 kDa	
Immunogen Catalog Number: AG7440	MW observés: 11 kDa	

## Applications

Applications testées:  
IF, IHC, WB, ELISA

Demandes citées:  
FC, IF, IHC, WB

Spécificité de l'espèce:  
Humain, rat, souris

Espèces citées:  
Humain, rat, souris

**Remarque-IHC: il est suggéré de démasquer l'antigène avec un tampon de TE buffer pH 9,0; (\*) À défaut, le démasquage de l'antigène peut être effectué avec un tampon citrate pH 6,0.**

Contrôles positifs:

WB : cellules A375, cellules C6, cellules U-251, tissu cérébral de souris, tissu cérébral humain, tissu testiculaire humain

IHC : tissu de mélanome malin humain, tissu cérébral de souris, tissu de gliome humain

IF : tissu cérébral de souris, astrocytes humains, cellules A375, tissu de cervelet de souris, tissu de mélanome malin humain

## Informations générales

S100B is a member of the S100 family of proteins containing 2 EF-hand calcium-binding motifs and has been implicated in the regulation of cellular activities such as metabolism, motility, and proliferation. In the nervous system, S100B is constitutively released by astrocytes into the extracellular space, and at nanomolar concentrations, it can promote neurite outgrowth and protect neurons against oxidative stress. Within the central nervous system (CNS), S100B is thought to be a marker for astroglial activation, linking astrocyte dysfunction to schizophrenia. In addition to astrocytes, S100B is released from many cell types, such as adipocytes, chondrocytes, cardiomyocytes, and lymphocytes. Serum S100B represents a new biomarker for mood disorders.

## Publications notables

Autrice	Pubmed ID	Journal	Application
Yu-Pu Liu	30261232	Neurosci Lett	IF
Liang Yan	36144631	Molecules	
Dipro Bose	32927823	Nutrients	IF

## Stockage

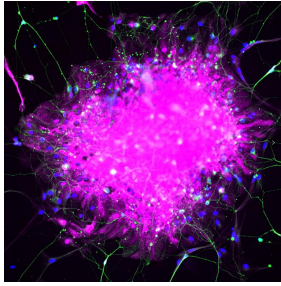
Stockage:  
Stocker à -20°C. Stable pendant un an après l'expédition.  
Tampon de stockage:  
PBS avec azoture de sodium à 0,02 % et glycérol à 50 % pH 7,3  
L'aliquotage n'est pas nécessaire pour le stockage à -20C

\*\*\* Les 20ul contiennent 0,1% de BSA.

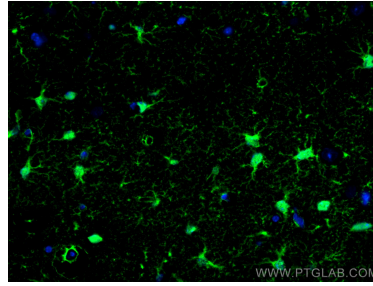
For technical support and original validation data for this product please contact:  
T: 1 (888) 4PTGLAB (1-888-478-4522) (toll free in USA), or 1(312) 455-8498 (outside USA)  
E: proteintech@ptglab.com  
W: ptglab.com

This product is exclusively available under Proteintech Group brand and is not available to purchase from any other manufacturer.

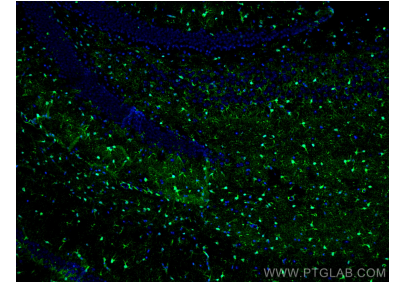
## Données de validation sélectionnées



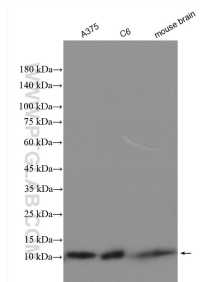
Immunofluorescence analysis of human pluripotent stem cell-derived astrocytes with S100 $\beta$  (15146-1-AP) at 1/200 (Magenta) and neurons with TUJ1 (66375-1-Ig) at 1:500 (Green). The sample was fixed with 4% Paraformaldehyde and permeabilized with 0.3% Triton X-100. Alexa Fluor 488-conjugated goat anti-mouse IgG (1/500) and Alexa Fluor 594-conjugated goat anti-rabbit IgG (1/500) were used as the secondary antibodies. Nuclei were counterstained with



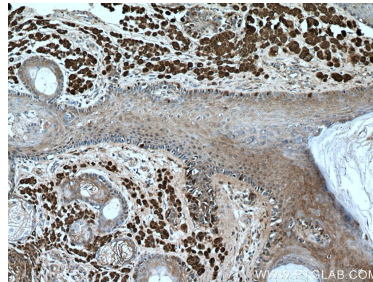
Immunofluorescent analysis of (4% PFA) fixed mouse brain tissue using S100 Beta antibody (15146-1-AP) at dilution of 1:200 and CoraLite@488-Conjugated AffiniPure Goat Anti-Rabbit IgG(H+L).



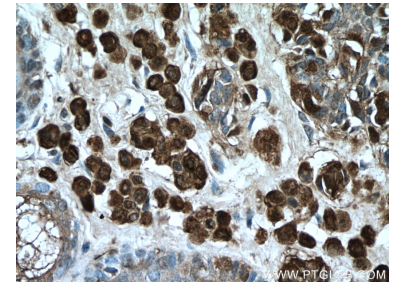
Immunofluorescent analysis of (4% PFA) fixed mouse brain tissue using S100 Beta antibody (15146-1-AP) at dilution of 1:200 and CoraLite@488-Conjugated AffiniPure Goat Anti-Rabbit IgG(H+L).



Various lysates were subjected to SDS PAGE followed by western blot with 15146-1-AP (S100 beta antibody) at dilution of 1:500 incubated at room temperature for 1.5 hours.



Immunohistochemical analysis of paraffin-embedded human malignant melanoma tissue slide using 15146-1-AP (S100 beta antibody) at dilution of 1:800 (under 10x lens).



Immunohistochemical analysis of paraffin-embedded human malignant melanoma tissue slide using 15146-1-AP (S100 beta antibody) at dilution of 1:800 (under 40x lens).