

À des fins de recherche uniquement

Anticorps Polyclonal de lapin anti-PSMB2



Numéro de catalogue: 15154-1-AP

Phare

5 Publications

Informations de base

Numéro de catalogue: 15154-1-AP	Numéro d'acquisition GenBank: BC000268	Méthode de purification: Purification par affinité contre l'antigène
Taille: 150ul , Concentration: 200 µg/ml by Nanodrop and 153 µg/ml by Bradford method using BSA as the standard;	Identification du gène (NCBI): 5690	Dilutions recommandées: WB 1:500-1:2000 IHC 1:20-1:200 IF 1:20-1:200
Hôte: Lapin	Nom complet: proteasome (prosome, macropain) subunit, beta type, 2	
Isotype: IgG	MW calculé: 23 kDa	
Immunogen Catalog Number: AG7198	MW observés: 23 kDa	

Applications

Applications testées:

IF, IHC, WB, ELISA

Demandes citées:

WB

Spécificité de l'espèce:

Humain

Espèces citées:

Humain, rat, souris

Remarque-IHC: il est suggéré de démasquer l'antigène avec un tampon de TE buffer pH 9,0; (*) À défaut, 'le démasquage de l'antigène peut être 'effectué avec un tampon citrate pH 6,0.

Contrôles positifs:

WB : cellules HEK-293T, cellules HEK-293, cellules HeLa, cellules Jurkat

IHC : tissu de tumeur ovarienne humain,

IF : cellules HepG2,

Informations générales

PSMB2, Proteasome subunit beta type-2, is also known as 20S proteasome subunit beta-4(PMID: 7918633). The proteasome is responsible for degradation of short lived and misfolded cytosolic and nuclear proteins in the cell and cleaves peptides in an ATP/ubiquitin-dependent process in a non-lysosomal pathway. PSMB2 is up-regulated in ovarian cancer cell lines. The up-regulation of PSMB2 may indicate the activated neuronal defensive mechanism in VAD (vitamin A depletion) brain regions (PMID: 21190828). Knockdown of PSMB2 suppresses hepatocellular carcinoma and gastric cancer cell proliferation and invasion (PMID: 29780166, PMID: 36110152).

Publications notables

Autrice	Pubmed ID	Journal	Application
Sheng Tan	29780166	Oncogene	WB
Chang-Xin Shi	32561655	Mol Cancer Res	WB
Xin Xie	32595507	Front Pharmacol	WB

Stockage

Stockage:

Stocker à -20°C. Stable pendant un an après l'expédition.

Tampon de stockage:

PBS avec azoture de sodium à 0,02 % et glycérol à 50 % pH 7,3

L'aliquotage n'est pas nécessaire pour le stockage à -20C

*** Les 20ul contiennent 0,1% de BSA.

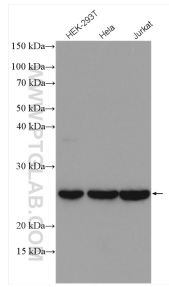
For technical support and original validation data for this product please contact:

T: 1 (888) 4PTGLAB (1-888-478-4522) (toll free in USA), or 1(312) 455-8498 (outside USA)

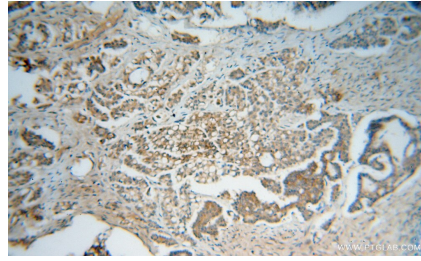
E: proteintech@ptglab.com
W: ptglab.com

This product is exclusively available under Proteintech Group brand and is not available to purchase from any other manufacturer.

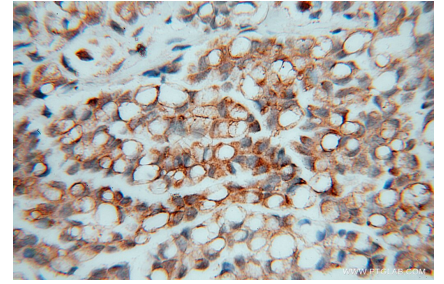
Données de validation sélectionnées



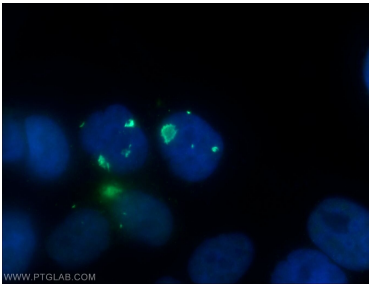
Various lysates were subjected to SDS PAGE followed by western blot with 15154-1-AP (PSMB2 antibody) at dilution of 1:1000 incubated at room temperature for 1.5 hours.



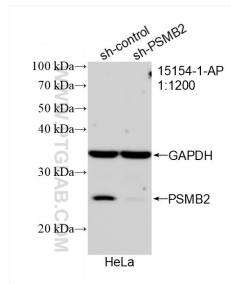
Immunohistochemical analysis of paraffin-embedded human ovary tumor using 15154-1-AP (PSMB2 antibody) at dilution of 1:50 (under 10x lens).



Immunohistochemical analysis of paraffin-embedded human ovary tumor using 15154-1-AP (PSMB2 antibody) at dilution of 1:50 (under 40x lens).



Immunofluorescent analysis of HepG2 cells using 15154-1-AP (PSMB2 antibody) at dilution of 1:50 and Alexa Fluor 488-conjugated AffiniPure Goat Anti-Rabbit IgG(H+L).



WB result of PSMB2 antibody (15154-1-AP; 1:1200; incubated at room temperature for 1.5 hours) with sh-Control and sh-PSMB2 transfected HeLa cells.