

À des fins de recherche uniquement

Anticorps Polyclonal de lapin anti-MEN1



Numéro de catalogue: 15159-1-AP

Informations de base

Numéro de catalogue:
15159-1-AP

Taille:
150ul, Concentration: 400 µg/ml by
Nanodrop and 440 µg/ml by Bradford
method using BSA as the standard;

Hôte:
Lapin

Isotype:
IgG

Immunogen Catalog Number:
AG7253

Numéro d'acquisition GenBank:
BC002544

Identification du gène (NCBI):
4221

Nom complet:
multiple endocrine neoplasia I

MW calculé
68 kDa

MW observés:
63-70 kDa

Méthode de purification:
Purification par affinité contre
l'antigène

Dilutions recommandées:
WB 1:500-1:2000
IP 0.5-4.0 ug for IP and 1:500-1:1000
for WB
IF 1:50-1:500

Applications

Applications testées:
IF, IP, WB, ELISA

Spécificité de l'espèce:
Humain, rat, souris

Contrôles positifs:

WB : cellules HepG2, cellules HeLa, cellules Jurkat

IP : cellules HEK-293,

IF : cellules HeLa,

Informations générales

MEN1, also named as Menin or MEAI, is a tumor suppressor protein encoded by the MEN1 gene. Its inactivation has been implicated in tumors of many endocrine tissues. Germline inactivating mutations of MEN1 gene are the main cause of multiple endocrine neoplasia type 1 (MEN1), a syndrome characterized by tumors in the pituitary gland, the parathyroid glands, and the enteropancreatic neuroendocrine tissues. Recent study shows astroglia menin deficiency leads to depressive-like behaviors in mice

Stockage

Stockage:

Stocker à -20°C. Stable pendant un an après l'expédition.

Tampon de stockage:

PBS avec azoture de sodium à 0,02 % et glycérol à 50 % pH 7,3

L'aliquotage n'est pas nécessaire pour le stockage à -20C

*** Les 20ul contiennent 0,1% de BSA.

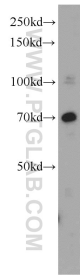
For technical support and original validation data for this product please contact:

T: 1 (888) 4PTGLAB (1-888-478-4522) (toll free
in USA), or 1(312) 455-8498 (outside USA)

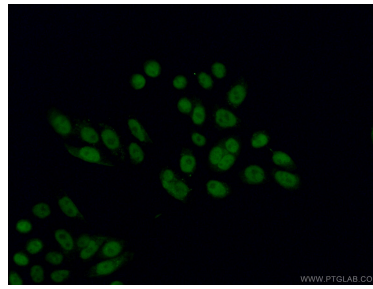
E: proteintech@ptglab.com
W: ptglab.com

This product is exclusively available under Proteintech Group brand and is not available to purchase from any other manufacturer.

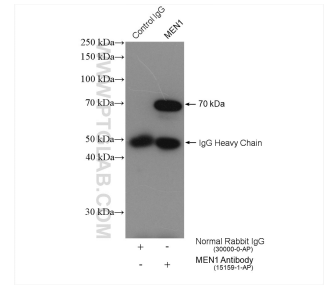
Données de validation sélectionnées



HepG2 cells were subjected to SDS PAGE followed by western blot with 15159-1-AP (MEN1 antibody) at dilution of 1:500 incubated at room temperature for 1.5 hours.



Immunofluorescent analysis of (4% PFA) fixed HeLa cells using 15159-1-AP (MEN1 antibody) at dilution of 1:50 and CoraLite488-Conjugated AffiniPure Goat Anti-Rabbit IgG(H+L).



IP result of anti-MEN1(IP:15159-1-AP, 4ug; Detection:15159-1-AP 1:500) with HEK-293 cells lysate 1320 ug.