

À des fins de recherche uniquement

Anticorps Polyclonal de lapin anti-WDR18



Numéro de catalogue: 15165-1-AP

Phare

3 Publications

Informations de base

Numéro de catalogue:

15165-1-AP

Taille:

150ul, Concentration: 350 µg/ml by Nanodrop and 227 µg/ml by Bradford method using BSA as the standard;

Hôte:

Lapin

Isotype:

IgG

Immunogen Catalog Number:

AG7282

Numéro d'acquisition GenBank:

BC001648

Identification du gène (NCBI):

57418

Nom complet:

WD repeat domain 18

MW calculé

47 kDa

MW observés:

47 kDa

Méthode de purification:

Purification par affinité contre l'antigène

Dilutions recommandées:

WB 1:500-1:1000

IHC 1:50-1:500

Applications

Applications testées:

IHC, WB, ELISA

Demandes citées:

WB

Spécificité de l'espèce:

Humain

Espèces citées:

Humain

Remarque-IHC: il est suggéré de démasquer l'antigène avec un tampon de TE buffer pH 9,0; (*) A défaut, le démasquage de l'antigène peut être effectué avec un tampon citrate pH 6,0.

Contrôles positifs:

WB : cellules Jurkat,

IHC : tissu pulmonaire humain, tissu de cancer du poumon humain, tissu de tumeur ovarienne humain

Informations générales

WDR18 is a member of the WD repeat protein family. WD repeats are minimally conserved regions of approximately 40 amino acids typically bracketed by gly-his and trp-asn (GH-WD), which may facilitate formation of heterotrimeric or multiprotein complexes. Members of this family are involved in a variety of cellular processes, including cell cycle progression, signal transduction, apoptosis, and gene regulation. WDR18 may play a role during development. The complex PELP1-TEX10-WDR18 is required for the maturation and nucleolar release of the large ribosomal subunit. This complex is a regulator of ribosome biogenesis and suggests that its SUMO-controlled distribution coordinates the rate of ribosome formation (PMID:21326211).

Publications notables

Autrice	Pubmed ID	Journal	Application
Yining Huang	27057756	PLoS One	WB
Fanis Pavlos P	22872859	Mol Cell Proteomics	WB
Finkbeiner Elisabeth E	21326211	EMBO J	WB

Stockage

Stockage:

Stocker à -20°C. Stable pendant un an après l'expédition.

Tampon de stockage:

PBS avec azoture de sodium à 0,02 % et glycérol à 50 % pH 7,3

L'aliquotage n'est pas nécessaire pour le stockage à -20C

*** Les 20ul contiennent 0,1% de BSA.

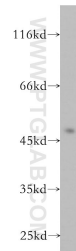
For technical support and original validation data for this product please contact:

T: 1 (888) 4PTGLAB (1-888-478-4522) (toll free in USA), or 1(312) 455-8498 (outside USA)

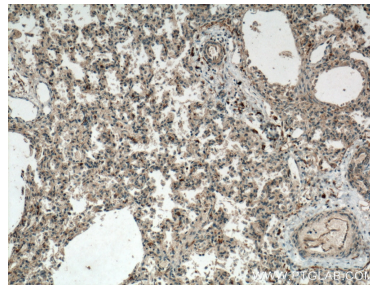
E: proteintech@ptglab.com
W: ptglab.com

This product is exclusively available under Proteintech Group brand and is not available to purchase from any other manufacturer.

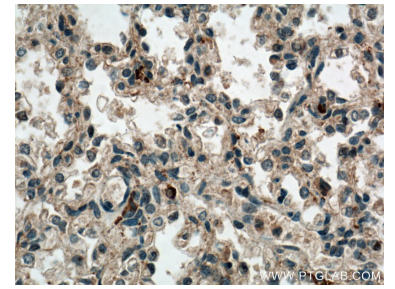
Données de validation sélectionnées



Jurkat cells were subjected to SDS PAGE followed by western blot with 15165-1-AP (WDR18 antibody) at dilution of 1:500 incubated at room temperature for 1.5 hours.



Immunohistochemical analysis of paraffin-embedded human lung tissue slide using 15165-1-AP (WDR18 Antibody) at dilution of 1:200 (under 10x lens). Heat mediated antigen retrieval with Tris-EDTA buffer (pH 9.0).



Immunohistochemical analysis of paraffin-embedded human lung tissue slide using 15165-1-AP (WDR18 Antibody) at dilution of 1:200 (under 40x lens). Heat mediated antigen retrieval with Tris-EDTA buffer (pH 9.0).