

À des fins de recherche uniquement

# Anticorps Polyclonal de lapin anti-FEM1A



Numéro de catalogue: 15169-1-AP

## Informations de base

<b>Numéro de catalogue:</b> 15169-1-AP	<b>Numéro d'acquisition GenBank:</b> BC004988	<b>Méthode de purification:</b> Purification par affinité contre l'antigène
<b>Taille:</b> 150ul , Concentration: 133 µg/ml by Bradford method using BSA as the standard;	<b>Identification du gène (NCBI):</b> 55527	<b>Dilutions recommandées:</b> WB 1:200-1:1000 IHC 1:20-1:200
<b>Hôte:</b> Lapin	<b>Nom complet:</b> fem-1 homolog a (C. elegans)	
<b>Isotype:</b> IgG	<b>MW calculé:</b> 74 kDa	
<b>Immunogen Catalog Number:</b> AG7357	<b>MW observés:</b> 74 kDa	

## Applications

<b>Applications testées:</b> IHC, WB, ELISA	<b>Contrôles positifs:</b> WB : cellules U-937, IHC : tissu de muscle squelettique humain,
<b>Spécificité de l'espèce:</b> Humain	
<b>Remarque-IHC: il est suggéré de démasquer l'antigène avec un tampon de TE buffer pH 9,0; (*) À défaut, le démasquage de l'antigène peut être effectué avec un tampon citrate pH 6,0.</b>	

## Informations générales

FEM1A, also named as Protein fem-1 homolog A-A, is a 654 amino acid protein, which belongs to the fem-1 family. FEM1A is highly expressed in adult heart and skeletal muscle. FEM1A is a Probable component of an E3 ubiquitin-protein ligase complex, in which it may act as a substrate recognition subunit. FEM1A may participate in anti-inflammatory signaling via its interaction with PTGER4. Furthermore, Fem1a expression is down-regulated in rhabdomyosarcoma cells suggesting that the FEM1A gene may be involved in muscle differentiation or be at least a marker of abnormal differentiation in rhabdomyosarcoma. Knowing that a molecular weight of 76 kDa is predicted for human FEM1A, but phosphorylated FEM1A is 95-100 kDa (PMID: 19406122).

## Stockage

**Stockage:**  
Stocker à -20°C. Stable pendant un an après l'expédition.  
**Tampon de stockage:**  
PBS avec azoture de sodium à 0,02 % et glycérol à 50 % pH 7,3  
L'aliquotage n'est pas nécessaire pour le stockage à -20C

\*\*\* Les 20ul contiennent 0,1% de BSA.

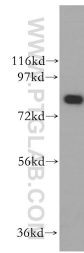
For technical support and original validation data for this product please contact:

T: 1 (888) 4PTGLAB (1-888-478-4522) (toll free in USA), or 1(312) 455-8498 (outside USA)

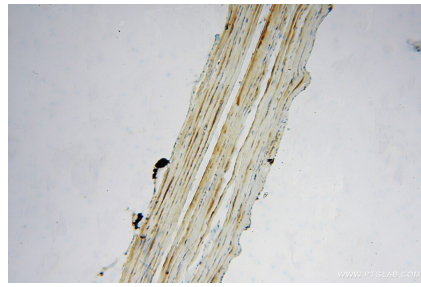
E: proteintech@ptglab.com  
W: ptglab.com

This product is exclusively available under Proteintech Group brand and is not available to purchase from any other manufacturer.

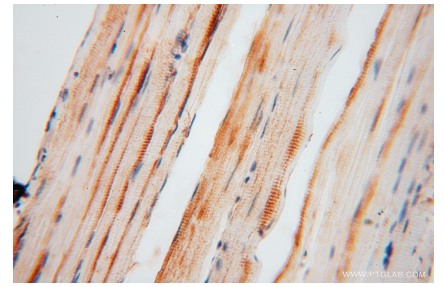
## Données de validation sélectionnées



U-937 cells were subjected to SDS PAGE followed by western blot with 15169-1-AP (FEM1A antibody) at dilution of 1:300 incubated at room temperature for 1.5 hours.



Immunohistochemical analysis of paraffin-embedded human skeletal muscle using 15169-1-AP (FEM1A antibody) at dilution of 1:50 (under 10x lens).



Immunohistochemical analysis of paraffin-embedded human skeletal muscle using 15169-1-AP (FEM1A antibody) at dilution of 1:50 (under 40x lens).