

À des fins de recherche uniquement

Anticorps Polyclonal de lapin anti-CRAT



Numéro de catalogue: 15170-1-AP

Phare

8 Publications

Informations de base

Numéro de catalogue:

15170-1-AP

Taille:

150ul, Concentration: 350 µg/ml by Nanodrop;

Hôte:

Lapin

Isotype:

IgG

Immunogen Catalog Number:

AG7422

Numéro d'acquisition GenBank:

BC000723

Identification du gène (NCBI):

1384

Nom complet:

carnitine acetyltransferase

MW calculé

71 kDa

MW observés:

55-68 kDa

Méthode de purification:

Purification par affinité contre l'antigène

Dilutions recommandées:

WB 1:500-1:1000

IP 0.5-4.0 ug for IP and 1:200-1:1000 for WB

Applications

Applications testées:

IP, WB, ELISA

Demandes citées:

WB

Spécificité de l'espèce:

Humain, rat, souris

Espèces citées:

Chèvre, rat, souris

Contrôles positifs:

WB : tissu cardiaque de souris, cœur de rat, cœur de souris, muscle squelettique de rat, tissu de muscle squelettique de souris

IP : tissu de muscle squelettique de souris,

Informations générales

CRAT, also named as CAT1, belongs to the carnitine/choline acetyltransferase family. It is specific for short chain fatty acids. CRAT seems to affect the flux through the pyruvate dehydrogenase complex. It may be involved as well in the transport of acetyl-CoA into mitochondria. Carnitine palmitoyltransferase (CPT) deficiencies are common disorders of mitochondrial fatty acid oxidation. The CPT system is made up of two separate proteins located in the outer (CPT1) and inner (CPT2) mitochondrial membranes. CRAT is an active forms for carnitine acetyltransferase. This antibody can bind the close sequences genes.

Publications notables

Autrice	Pubmed ID	Journal	Application
Joongyu D Song	33035493	Cell Metab	WB
Xutong Sun	32554303	Redox Biol	WB
Guoyu Yu	29535221	Cancer Res	

Stockage

Stockage:

Stocker à -20°C. Stable pendant un an après l'expédition.

Tampon de stockage:

PBS avec azoture de sodium à 0,02 % et glycérol à 50 % pH 7,3

L'aliquotage n'est pas nécessaire pour le stockage à -20C

*** Les 20ul contiennent 0,1% de BSA.

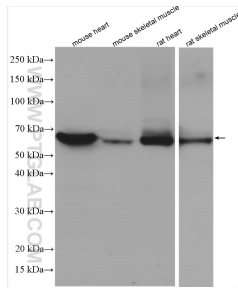
For technical support and original validation data for this product please contact:

T: 1 (888) 4PTGLAB (1-888-478-4522) (toll free in USA), or 1(312) 455-8498 (outside USA)

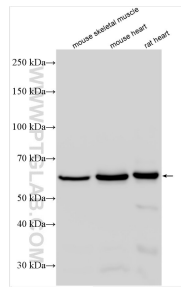
E: proteintech@ptglab.com
W: ptglab.com

This product is exclusively available under Proteintech Group brand and is not available to purchase from any other manufacturer.

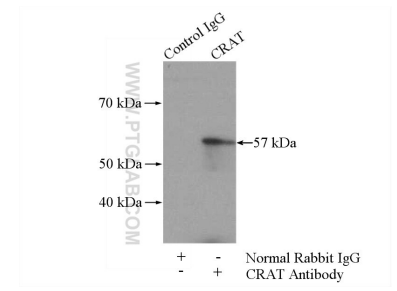
Données de validation sélectionnées



Various lysates were subjected to SDS PAGE followed by western blot with 15170-1-AP (CRAT antibody) at dilution of 1:800 incubated at room temperature for 1.5 hours.



Various lysates were subjected to SDS PAGE followed by western blot with 15170-1-AP (CRAT antibody) at dilution of 1:8000 incubated at room temperature for 1.5 hours.



IP Result of anti-CRAT (IP:15170-1-AP, 4ug; Detection:15170-1-AP 1:300) with mouse skeletal muscle tissue lysate 3600ug.