

À des fins de recherche uniquement

Anticorps Polyclonal de lapin anti-Gamma Tubulin



Numéro de catalogue: 15176-1-AP

16 Publications

Informations de base

Numéro de catalogue:

15176-1-AP

Taille:

150ul, Concentration: 700 µg/ml by Nanodrop;

Hôte:

Lapin

Isotype:

IgG

Immunogen Catalog Number:

AG7070

Numéro d'acquisition GenBank:

BC000619

Identification du gène (NCBI):

7283

Nom complet:

tubulin, gamma 1

MW calculé

51 kDa

MW observés:

50-55 kDa

Méthode de purification:

Purification par affinité contre l'antigène

Dilutions recommandées:

WB 1:500-1:1000

IP 0.5-4.0 ug for IP and 1:1000-1:4000 for WB

IHC 1:50-1:500

IF 1:50-1:200

Applications

Applications testées:

FC, IF, IHC, IP, WB, ELISA

Demandes citées:

IF, IHC, WB

Spécificité de l'espèce:

canin, Humain, rat, souris

Espèces citées:

Humain, souris

Contrôles positifs:

WB : cellules HeLa, cellules HEK-293 transfectées

IP : cellules HeLa,

IHC : tissu de cancer de la prostate humain, tissu d'hyperplasie de la prostate humain

IF : cellules hTERT-RPE, cellules hTERT-RPE, cellules HUVEC, cellules MDCK

Remarque-IHC: il est suggéré de démasquer l'antigène avec un tampon de TE buffer pH 9,0; (*) À défaut, 'le démasquage de l'antigène peut être 'effectué avec un tampon citrate pH 6,0.

Informations générales

Gamma tubulin is a member of tubulin superfamily and is a key component required for microtubule nucleation and stabilization. It is concentrated at the pericentriolar material of centrosomes in interphase cells, predominantly on spindle poles in mitotic cells, while found in midbodies during cytokinesis. Overexpression of gamma tubulin has been found in various cancers including breast cancer and gliomas. This antibody can well label the centrosome structure.

Publications notables

Autrice	Pubmed ID	Journal	Application
Lauren G. Mascibroda	36229431	Nat Commun	IF, WB
Suchismita Panda	30296263	PLoS Biol	IF
Ramona Jühlen	33168876	Sci Rep	IF

Stockage

Stockage:

Stocker à -20°C. Stable pendant un an après l'expédition.

Tampon de stockage:

PBS avec azoture de sodium à 0,02 % et glycérol à 50 % pH 7,3

L'aliquotage n'est pas nécessaire pour le stockage à -20C

*** Les 20ul contiennent 0,1% de BSA.

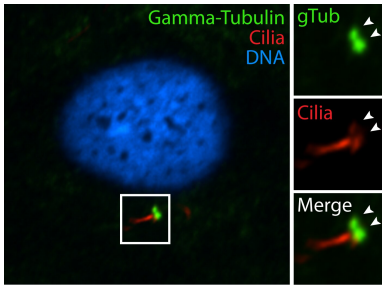
For technical support and original validation data for this product please contact:

T: 1 (888) 4PTGLAB (1-888-478-4522) (toll free in USA), or 1(312) 455-8498 (outside USA)

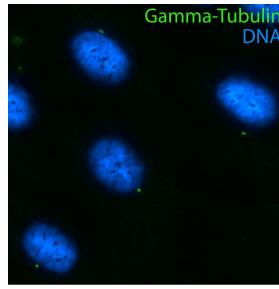
E: proteintech@ptglab.com
W: ptglab.com

This product is exclusively available under Proteintech Group brand and is not available to purchase from any other manufacturer.

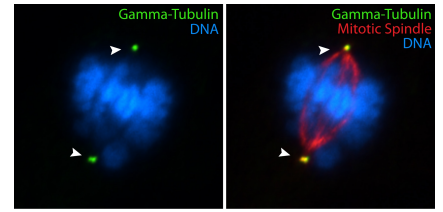
Données de validation sélectionnées



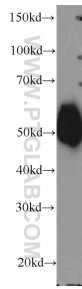
IF results of gamma tubulin antibody (15176-1-AP, 1:100) with hTERT-RPE cells by Moshe Kim (laboratory of Dr. William S Trimble, University of Toronto). Cells were fixed in ice-cold methanol.



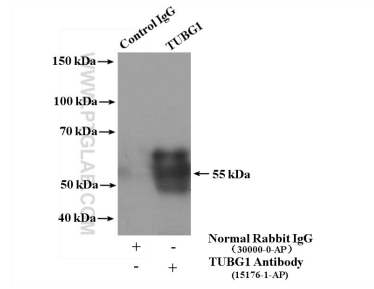
IF results of gamma tubulin antibody (15176-1-AP, 1:100) with hTERT-RPE cells by Moshe Kim (laboratory of Dr. William S Trimble, University of Toronto). Cells were fixed in ice-cold methanol.



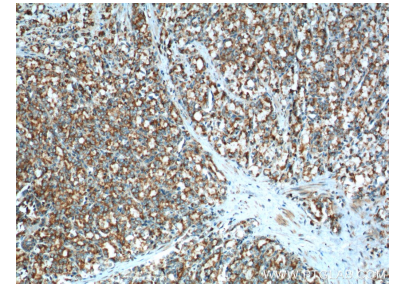
IF results of gamma tubulin antibody (15176-1-AP, 1:100) with hTERT-RPE cells by Moshe Kim (laboratory of Dr. William S Trimble, University of Toronto). Cells were fixed in ice-cold methanol.



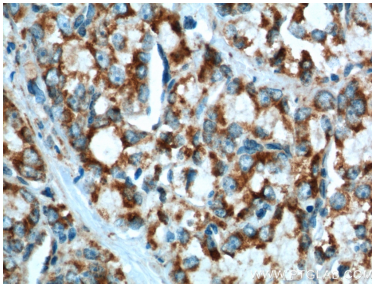
HeLa cells were subjected to SDS PAGE followed by western blot with 15176-1-AP (gamma Tubulin antibody at dilution of 1:600 incubated at room temperature for 1.5 hours.



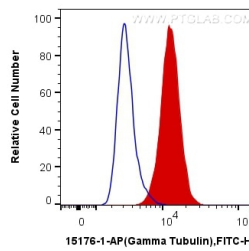
IP Result of anti-gamma Tubulin (IP:15176-1-AP, 4ug; Detection:15176-1-AP 1:2000) with HeLa cells lysate 1600ug.



Immunohistochemical analysis of paraffin-embedded human prostate cancer tissue slide using 15176-1-AP (gamma Tubulin antibody at dilution of 1:200 (under 10x lens). Heat mediated antigen retrieval with Tris-EDTA buffer (pH 9.0).



Immunohistochemical analysis of paraffin-embedded human prostate cancer tissue slide using 15176-1-AP (gamma Tubulin antibody at dilution of 1:200 (under 40x lens). Heat mediated antigen retrieval with Tris-EDTA buffer (pH 9.0).



1X10⁶ HeLa cells were intracellularly stained with 0.4 ug Anti-Human Gamma Tubulin (15176-1-AP) and CoraLite®488-Conjugated AffiniPure Goat Anti-Rabbit IgG(H+L) at dilution 1:1000 (red), or 0.4 ug Control Antibody. Cells were fixed with 4% PFA and permeabilized with Flow Cytometry Perm Buffer (PF00011-C).