

À des fins de recherche uniquement

# Anticorps Polyclonal de lapin anti-CA12



Numéro de catalogue: 15180-1-AP

Phare

16 Publications

## Informations de base

Numéro de catalogue:

15180-1-AP

Taille:

150ul, Concentration: 700 µg/ml by Nanodrop and 427 µg/ml by Bradford method using BSA as the standard;

Hôte:

Lapin

Isotype:

IgG

Immunogen Catalog Number:

AG7107

Numéro d'acquisition GenBank:

BC000278

Identification du gène (NCBI):

771

Nom complet:

carbonic anhydrase XII

MW calculé

39 kDa

MW observés:

44 kDa, 75-80 kDa

Méthode de purification:

Purification par affinité contre l'antigène

Dilutions recommandées:

WB 1:2000-1:10000

IHC 1:250-1:1000

## Applications

Applications testées:

FC, IHC, WB, ELISA

Demandes citées:

IF, IHC, IP, WB

Spécificité de l'espèce:

Humain, rat, souris

Espèces citées:

Humain, rat, souris

**Remarque-IHC: il est suggéré de démasquer l'antigène avec un tampon de TE buffer pH 9,0; (\*) A défaut, le démasquage de l'antigène peut être effectué avec un tampon citrate pH 6,0.**

Contrôles positifs:

WB : cellules A549, cellules BxPC-3, cellules MCF-7

IHC : tissu pancréatique humain, tissu rénal humain

## Informations générales

CA12 belongs to the alpha-carbonic anhydrase family. It reversible hydration of carbon dioxide. Overexpression of the zinc enzyme CA12 is observed in certain human cancers. The structure reveals a prototypical CA fold; however, two CA12 domains associate to form an isologous dimer, an observation that is confirmed by studies of the enzyme in solution.

## Publications notables

Autrice	Pubmed ID	Journal	Application
Pan-Ling Xu	34597654	J Ethnopharmacol	WB
Soyoung Hwang	31546841	Molecules	WB,IF
Sang-Woo Kim	28901294	Nanotechnology	WB

## Stockage

Stockage:

Stocker à -20°C. Stable pendant un an après l'expédition.

Tampon de stockage:

PBS avec azoture de sodium à 0,02 % et glycérol à 50 % pH 7,3

L'aliquotage n'est pas nécessaire pour le stockage à -20C

\*\*\* Les 20ul contiennent 0,1% de BSA.

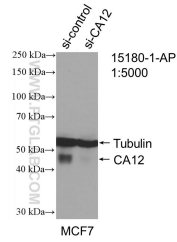
For technical support and original validation data for this product please contact:

T: 1 (888) 4PTGLAB (1-888-478-4522) (toll free in USA), or 1(312) 455-8498 (outside USA)

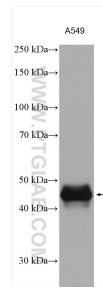
E: proteintech@ptglab.com  
W: ptglab.com

This product is exclusively available under Proteintech Group brand and is not available to purchase from any other manufacturer.

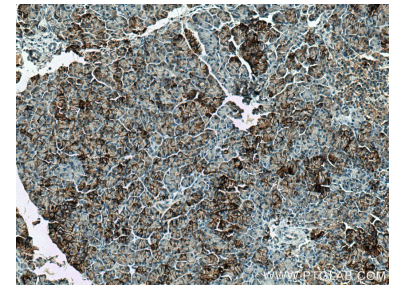
## Données de validation sélectionnées



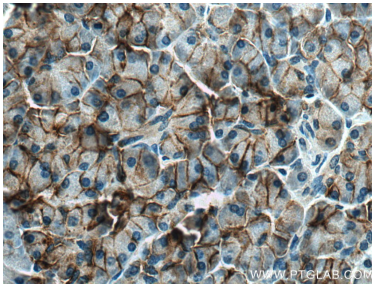
WB result of CA12 antibody (15180-1-AP; 1:5000; incubated at room temperature for 1.5 hours) with sh-Control and sh-CA12 transfected MCF-7 cells.



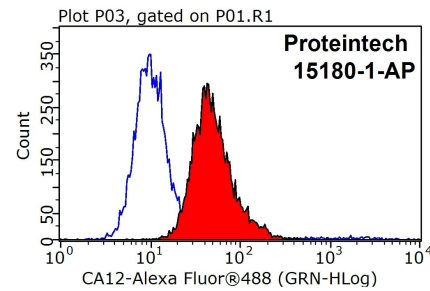
A549 cells were subjected to SDS PAGE followed by western blot with 15180-1-AP (CA12 antibody) at dilution of 1:5000 incubated at room temperature for 1.5 hours.



Immunohistochemical analysis of paraffin-embedded human pancreas tissue slide using 15180-1-AP (CA12 antibody) at dilution of 1:500 (under 10x lens). Heat mediated antigen retrieval with Tris-EDTA buffer (pH 9.0).



Immunohistochemical analysis of paraffin-embedded human pancreas tissue slide using 15180-1-AP (CA12 antibody) at dilution of 1:500 (under 40x lens). Heat mediated antigen retrieval with Tris-EDTA buffer (pH 9.0).



1x10<sup>6</sup> HEK-293 cells were stained with 0.2ug CA12 antibody (15180-1-AP, red) and control antibody (blue). Fixed with 90% MeOH blocked with 3% BSA (30 min). Alexa Fluor 488-conjugated AffiniPure Goat Anti-Rabbit IgG(H+L) with dilution 1:1000.