

À des fins de recherche uniquement

Anticorps Polyclonal de lapin anti-CPT1A



Numéro de catalogue: 15184-1-AP

Phare

265 Publications

Informations de base

Numéro de catalogue:

15184-1-AP

Taille:

150ul, Concentration: 900 µg/ml by Nanodrop;

Hôte:

Lapin

Isotype:

IgG

Immunogen Catalog Number:

AG7202

Numéro d'acquisition GenBank:

BC000185

Identification du gène (NCBI):

1374

Nom complet:

carnitine palmitoyltransferase 1A (liver)

MW calculé

88 kDa

MW observés:

86 kDa

Méthode de purification:

Purification par affinité contre l'antigène

Dilutions recommandées:

WB 1:5000-1:50000

IP 0.5-4.0 µg for IP and 1:500-1:2000 for WB

IHC 1:500-1:2000

IF 1:50-1:500

Applications

Applications testées:

FC, IF, IHC, IP, WB, ELISA

Demandes citées:

CoIP, FC, IF, IHC, IP, WB

Spécificité de l'espèce:

Humain, rat, souris

Espèces citées:

bovin, Humain, poisson-zèbre, porc, rat, souris, duck

Remarque-IHC: il est suggéré de démasquer l'antigène avec un tampon de TE buffer pH 9,0; (*) À défaut, le démasquage de l'antigène peut être effectué avec un tampon citrate pH 6,0.

Contrôles positifs:

WB : cellules HeLa, cellules A549, cellules HepG2, cellules MCF-7, cellules U-251, tissu hépatique de rat, tissu hépatique de souris

IP : cellules HepG2,

IHC : tissu de cancer du foie humain, tissu cérébral de souris

IF : cellules HepG2,

Informations générales

CPT1A, also named as CPT1, CPT1-L and L-CPTI, belongs to the carnitine/choline acetyltransferase family. It is localized Chromosome 11q13.1-2. Carnitine palmitoyltransferase (CPT) deficiencies are common disorders of mitochondrial fatty acid oxidation. The CPT system is made up of two separate proteins located in the outer (CPT1) and inner (CPT2) mitochondrial membranes. CPT1A is an active forms of related liver-type carnitine palmitoyltransferase I. (PMID: 11001805). CPT1A deficiency presents as recurrent attacks of fasting hypoketotic hypoglycemia. (PMID: 15363638). This antibody can bind the close sequences genes.

Publications notables

Autrice	Pubmed ID	Journal	Application
Katherine Labbé	34586346	J Cell Biol	WB
Dan Xu	28970281	Diabetes	WB
Binbin Zhou	36169888	Mol Neurobiol	WB

Stockage

Stockage:

Stocker à -20°C. Stable pendant un an après l'expédition.

Tampon de stockage:

PBS avec azoture de sodium à 0,02 % et glycérol à 50 % pH 7,3

L'aliquotage n'est pas nécessaire pour le stockage à -20C

*** Les 20ul contiennent 0,1% de BSA.

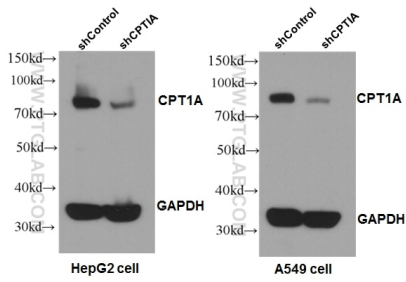
For technical support and original validation data for this product please contact:

T: 1 (888) 4PTGLAB (1-888-478-4522) (toll free in USA), or 1(312) 455-8498 (outside USA)

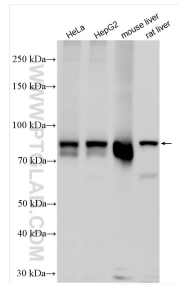
E: proteintech@ptglab.com
W: ptglab.com

This product is exclusively available under Proteintech Group brand and is not available to purchase from any other manufacturer.

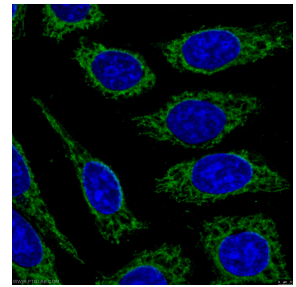
Données de validation sélectionnées



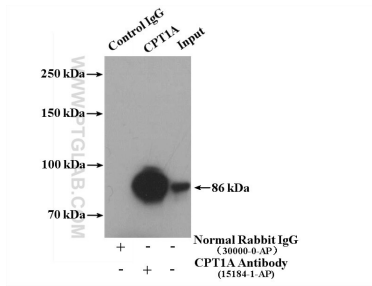
WB results of CPT1A antibody (1:1000) with shCPT1A-A549 and shCPT1A-HepG2 cells. shControl-A549 and shControl-HepG2 as positive control.



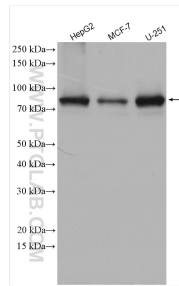
Various lysates were subjected to SDS PAGE followed by western blot with 15184-1-AP (CPT1A antibody) at dilution of 1:10000 incubated at room temperature for 1.5 hours.



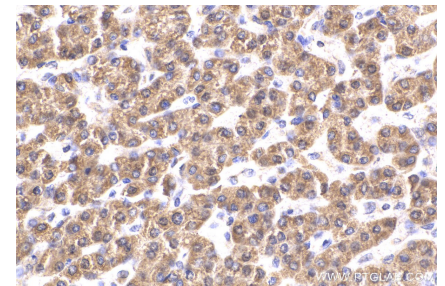
Immunofluorescent analysis of (-20°C Ethanol) fixed HepG2 cells using 15184-1-AP (CPT1A antibody) at dilution of 1:50 and Alexa Fluor 488-Conjugated AffiniPure Goat Anti-Rabbit IgG(H+L).



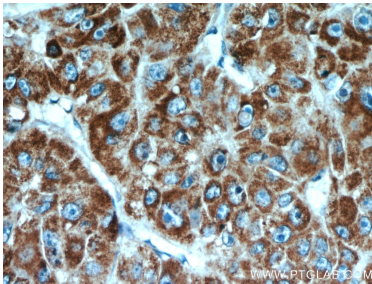
IP result of anti-CPT1A (IP:15184-1-AP, 4ug; Detection:15184-1-AP 1:1000) with HepG2 cells lysate 3000 ug.



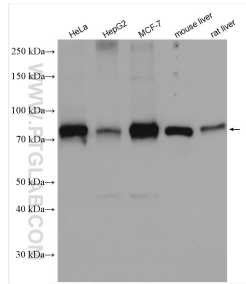
Various lysates were subjected to SDS PAGE followed by western blot with 15184-1-AP (CPT1A antibody) at dilution of 1:1000 incubated at room temperature for 1.5 hours.



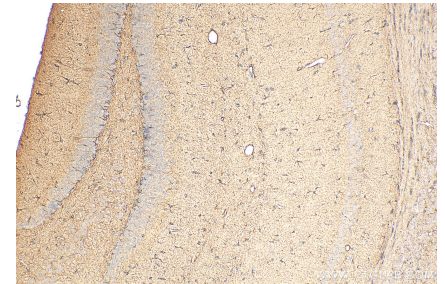
Immunohistochemical analysis of paraffin-embedded human liver cancer tissue slide using 15184-1-AP (CPT1A antibody) at dilution of 1:1000 (under 40x lens). Heat mediated antigen retrieval with Tris-EDTA buffer (pH 9.0).



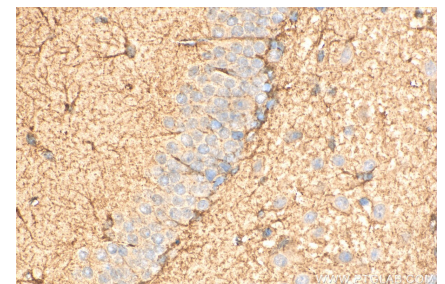
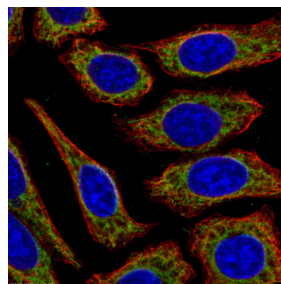
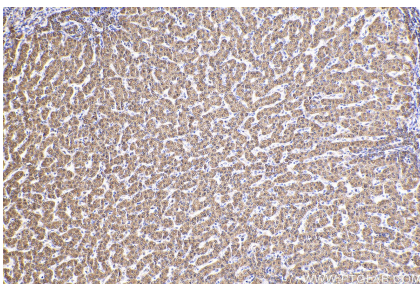
Immunohistochemical analysis of paraffin-embedded human liver cancer using 15184-1-AP (CPT1A antibody) at dilution of 1:100 (under 40x lens).



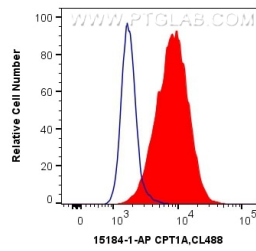
Various lysates were subjected to SDS PAGE followed by western blot with 15184-1-AP (CPT1A antibody) at dilution of 1:10000 incubated at room temperature for 1.5 hours.



Immunohistochemical analysis of paraffin-embedded mouse brain tissue slide using 15184-1-AP (CPT1A antibody) at dilution of 1:1000 (under 10x lens). Heat mediated antigen retrieval with Tris-EDTA buffer (pH 9.0).



Immunohistochemical analysis of paraffin-embedded human liver cancer tissue slide using 15184-1-AP (CPT1A antibody) at dilution of 1:1000 (under 10x lens). Heat mediated antigen retrieval with Tris-EDTA buffer (pH 9.0).



1X10⁶ HeLa cells were intracellularly stained with 0.4 ug Anti-Human CPT1A (15184-1-AP) and CoraLite®488-Conjugated AffiniPure Goat Anti-Rabbit IgG(H+L) at dilution 1:1000 (red), or 0.4 ug Control Antibody. Cells were fixed with 4% PFA and permeabilized with Flow Cytometry Perm Buffer (PF00011-C).

Immunofluorescent analysis of -20°C Ethanol fixed HepG2 cells stained for CPT1A rabbit pAb (15184-1-AP) and KRT18 mouse mAb (66187-1-Ig) at dilution of 1:50, further stained with Alexa Fluor 488-Conjugated AffiniPure Goat Anti-Rabbit IgG(H+L) for 15184-1-AP, and Alexa Fluor 594-conjugated AffiniPure Goat Anti-Mouse IgG (H+L) for 66187-1-Ig.

Immunohistochemical analysis of paraffin-embedded mouse brain tissue slide using 15184-1-AP (CPT1A antibody) at dilution of 1:1000 (under 40x lens). Heat mediated antigen retrieval with Tris-EDTA buffer (pH 9.0).