

À des fins de recherche uniquement

# Anticorps Polyclonal de lapin anti-PRL3



Numéro de catalogue: 15186-1-AP

2 Publications

## Informations de base

Numéro de catalogue: 15186-1-AP	Numéro d'acquisition GenBank: BC003105	Méthode de purification: Purification par affinité contre l'antigène
Taille: 150ul , Concentration: 450 µg/ml by Nanodrop;	Identification du gène (NCBI): 11156	Dilutions recommandées: WB 1:1000-1:4000 IHC 1:250-1:1000
Hôte: Lapin	Nom complet: protein tyrosine phosphatase type IVA, member 3	
Isotype: IgG	MW calculé: 20 kDa	
Immunogen Catalog Number: AG7249	MW observés: 25 kDa	

## Applications

Applications testées:  
IHC, WB, ELISA

Demandes citées:  
IF, IHC

Spécificité de l'espèce:  
Humain

Espèces citées:  
Humain

Contrôles positifs:

WB : tissu cardiaque de souris, tissu cardiaque de rat

IHC : tissu de cancer du côlon humain, tissu cardiaque humain, tissu de cancer de l'œsophage humain

**Remarque-IHC: il est suggéré de démasquer l'antigène avec un tampon de TE buffer pH 9,0; (\*) À défaut, le démasquage de l'antigène peut être effectué avec un tampon citrate pH 6,0.**

## Informations générales

Phosphatase of regenerating liver-3 (PRL-3; also known as PTP4A3), encodes a 22-kDa protein that represents a novel class of a superfamily of protein tyrosine phosphatases (PTPs) that are ubiquitously expressed in various tumors. PRL3 was associated with primary tumor growth, tumor reoccurrence, and therapy resistance in many human cancers. This protein was also suggested as a marker to predict the relapse of gastric cancer and invasive breast cancer. (PMID: 22469786, PMID: 30157875)

## Publications notables

Autrice	Pubmed ID	Journal	Application
Shifan Ren	27222233	Reprod Sci	WB,IHC
Jianbiao Zhou	37032358	Mol Cancer	IF

## Stockage

Stockage:

Stocker à -20°C. Stable pendant un an après l'expédition.

Tampon de stockage:

PBS avec azoture de sodium à 0,02 % et glycérol à 50 % pH 7,3

L'aliquotage n'est pas nécessaire pour le stockage à -20C

\*\*\* Les 20ul contiennent 0,1% de BSA.

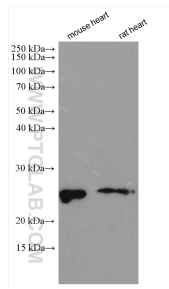
For technical support and original validation data for this product please contact:

T: 1 (888) 4PTGLAB (1-888-478-4522) (toll free in USA), or 1(312) 455-8498 (outside USA)

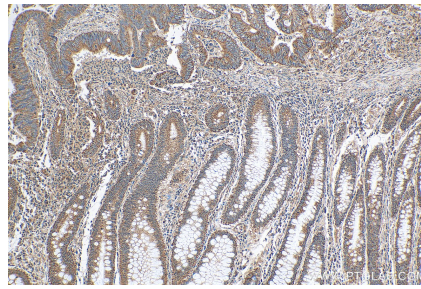
E: proteintech@ptglab.com  
W: ptglab.com

This product is exclusively available under Proteintech Group brand and is not available to purchase from any other manufacturer.

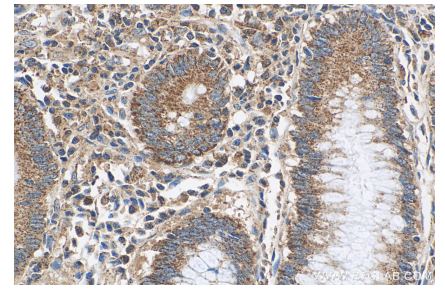
## Données de validation sélectionnées



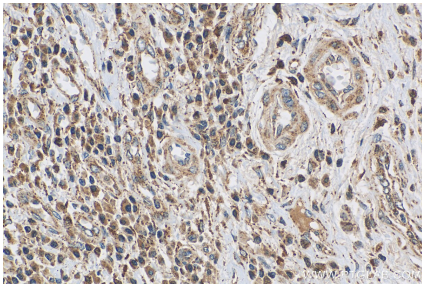
Various lysates were subjected to SDS PAGE followed by western blot with 15186-1-AP (PRL3 antibody) at dilution of 1:2000 incubated at room temperature for 1.5 hours.



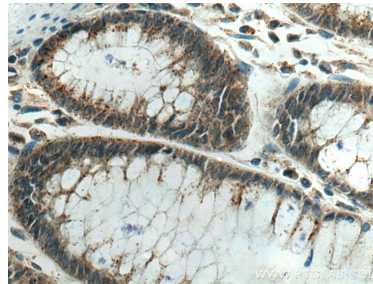
Immunohistochemical analysis of paraffin-embedded human colon cancer tissue slide using 15186-1-AP (PRL3 antibody) at dilution of 1:500 (under 10x lens). Heat mediated antigen retrieval with Tris-EDTA buffer (pH 9.0).



Immunohistochemical analysis of paraffin-embedded human colon cancer tissue slide using 15186-1-AP (PRL3 antibody) at dilution of 1:500 (under 40x lens). Heat mediated antigen retrieval with Tris-EDTA buffer (pH 9.0).



Immunohistochemical analysis of paraffin-embedded human oesophagus cancer tissue slide using 15186-1-AP (PRL3 antibody) at dilution of 1:500 (under 40x lens). Heat mediated antigen retrieval with Tris-EDTA buffer (pH 9.0).



Immunohistochemical analysis of paraffin-embedded human colon cancer tissue slide using 15186-1-AP (PRL3 antibody) at dilution of 1:200 (under 40x lens). Heat mediated antigen retrieval with Tris-EDTA buffer (pH 9.0).