

À des fins de recherche uniquement

Anticorps Polyclonal de lapin anti-CRACR2A



Numéro de catalogue: 15206-1-AP

Phare

5 Publications

Informations de base

Numéro de catalogue:

15206-1-AP

Taille:

150ul, Concentration: 700 µg/ml by Nanodrop and 400 µg/ml by Bradford method using BSA as the standard;

Hôte:

Lapin

Isotype:

IgG

Immunogen Catalog Number:

AG7358

Numéro d'acquisition GenBank:

BC004524

Identification du gène (NCBI):

84766

Nom complet:

EF-hand calcium binding domain 4B

MW calculé

46 kDa

MW observés:

46 kDa, 80-90 kDa

Méthode de purification:

Purification par affinité contre l'antigène

Dilutions recommandées:

WB 1:500-1:1000

IP 0.5-4.0 ug for IP and 1:500-1:1000 for WB

IHC 1:200-1:800

IF 1:50-1:500

Applications

Applications testées:

IF, IHC, IP, WB, ELISA

Demandes citées:

IF, IP, WB

Spécificité de l'espèce:

Humain

Espèces citées:

Humain, souris

Remarque-IHC: il est suggéré de démasquer l'antigène avec un tampon de TE buffer pH 9,0; (*) À défaut, 'le démasquage de l'antigène peut être 'effectué avec un tampon citrate pH 6,0.

Contrôles positifs:

WB : cellules Jurkat, cellules Daudi, cellules HeLa

IP : cellules Jurkat,

IHC : tissu d'amygdalite humain,

IF : cellules HEK-293,

Informations générales

CRACR2A (also called CRAC regulator 2A, EFCAB4B) is a cytoplasmic Ca²⁺ sensor predominantly expressed in lymphocytes. It has two isoforms: a long isoform of CRACR2A-a around 80-90 kDa and a short isoform of CRACR2A-c around 46 kDa. CRACR2A-c is involved in the regulation of Ca²⁺-NFAT signaling. CRACR2A-a exists in a GTP- and Golgi membrane-bound form in resting T cells, while it is present in subsynaptic vesicles that translocated from the Golgi region to the immunological synapse after ligation of TCRs. This antibody recognizes both of CRACR2A-c and CRACR2A-a.

Publications notables

| Autrice | Pubmed ID | Journal | Application |
|-------------------|-----------|-------------|-------------|
| Katarina T Miteva | 31092558 | J Cell Biol | WB,IF |
| Jin Seok Woo | 29987160 | J Immunol | WB |
| Lucia Pedicini | 33603063 | Sci Rep | IP,IF,WB |

Stockage

Stockage:

Stocker à -20°C. Stable pendant un an après l'expédition.

Tampon de stockage:

PBS avec azoture de sodium à 0,02 % et glycérol à 50 % pH 7,3

L'aliquotage n'est pas nécessaire pour le stockage à -20C

*** Les 20ul contiennent 0,1% de BSA.

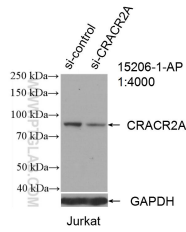
For technical support and original validation data for this product please contact:

T: 1 (888) 4PTGLAB (1-888-478-4522) (toll free in USA), or 1(312) 455-8498 (outside USA)

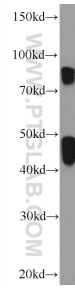
E: proteintech@ptglab.com
W: ptglab.com

This product is exclusively available under Proteintech Group brand and is not available to purchase from any other manufacturer.

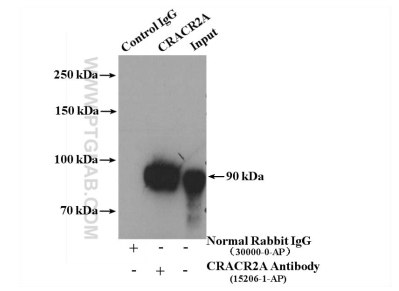
Données de validation sélectionnées



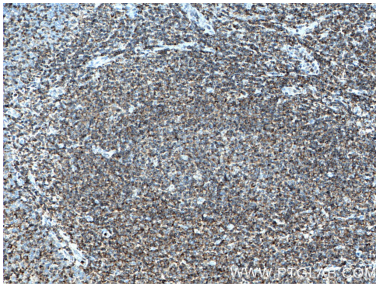
WB result of CRACR2A antibody (15206-1-AP; 1:4000; incubated at room temperature for 1.5 hours) with sh-Control and sh-CRACR2A transfected Jurkat cells.



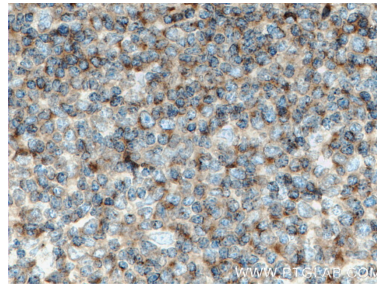
Jurkat cells were subjected to SDS PAGE followed by western blot with 15206-1-AP (CRACR2A) antibody at dilution of 1:600 incubated at room temperature for 1.5 hours.



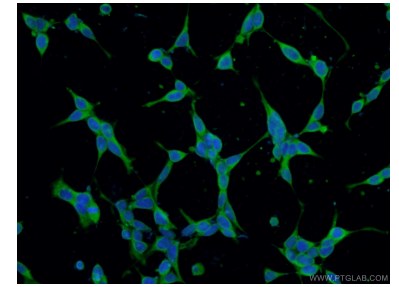
IP Result of anti-CRACR2A (IP:15206-1-AP, 4ug; Detection:15206-1-AP 1:500) with Jurkat cells lysate 3200ug.



Immunohistochemical analysis of paraffin-embedded human tonsillitis tissue slide using 15206-1-AP (CRACR2A antibody) at dilution of 1:400 (under 10x lens. Heat mediated antigen retrieval with Tris-EDTA buffer (pH 9.0).



Immunohistochemical analysis of paraffin-embedded human tonsillitis tissue slide using 15206-1-AP (CRACR2A antibody) at dilution of 1:400 (under 40x lens. Heat mediated antigen retrieval with Tris-EDTA buffer (pH 9.0).



Immunofluorescent analysis of (-20°C Ethanol) fixed HEK-293 cells using 15206-1-AP (CRACR2A antibody) at dilution of 1:50 and Alexa Fluor 488-Conjugated AffiniPure Goat Anti-Rabbit IgG(H+L).