

À des fins de recherche uniquement

Anticorps Polyclonal de lapin anti-CHAC1



Numéro de catalogue: 15207-1-AP

Phare

20 Publications

Informations de base

Numéro de catalogue: 15207-1-AP	Numéro d'acquisition GenBank: BC001847	Méthode de purification: Purification par affinité contre l'antigène
Taille: 150ul, Concentration: 300 µg/ml by Nanodrop;	Identification du gène (NCBI): 79094	Dilutions recommandées: WB 1:500-1:2000 IHC 1:50-1:500
Hôte: Lapin	Nom complet: ChaC, cation transport regulator homolog 1 (E. coli)	
Isotype: IgG	MW calculé: 24 kDa	
Immunogen Catalog Number: AG7360	MW observés: 38 kDa	

Applications

Applications testées:

IHC, WB, ELISA

Demandes citées:

IF, IHC, WB

Spécificité de l'espèce:

Humain, rat, souris, Hamster

Espèces citées:

Humain, souris

Contrôles positifs:

WB : cellules HeLa, cellules A549, cellules C6, cellules CHO, cellules RAW 264.7, cellules U-251

IHC : tissu d'estomac humain,

Remarque-IHC: il est suggéré de démasquer l'antigène avec un tampon de TE buffer pH 9,0; (*) À défaut, le démasquage de l'antigène peut être effectué avec un tampon citrate pH 6,0.

Informations générales

CHAC1 (Cation transport regulator-like protein 1) was identified in a co-regulated group of genes enriched for components of the ATF4 (activating transcription factor 4) arm of the unfolded protein response pathway. CHAC1 is a proapoptotic ER stress protein downstream of the pancreatic EIF2α kinase-ATF4 pathway that appears to be important for human physiology and disease (PMID: 19109178). In addition, the study found that high CHAC1 expression is associated with a bad prognosis hinting that CHAC1 may have a possible prognostic significance in breast cancer (PMID: 35930144). The predicted molecular weight of CHAC1 is 24 kDa, and the molecular weight detected by Proteintech is 38 kDa.

Publications notables

Autrice	Pubmed ID	Journal	Application
Xiong Yuyun	32910715	Innate Immun	WB
Xiaoli Zhang	34688836	Free Radic Biol Med	WB
Deng Li	33728749	J Cell Mol Med	WB, IHC

Stockage

Stockage:

Stocker à -20°C. Stable pendant un an après l'expédition.

Tampon de stockage:

PBS avec azoture de sodium à 0,02 % et glycérol à 50 % pH 7,3

L'aliquotage n'est pas nécessaire pour le stockage à -20C

*** Les 20ul contiennent 0,1% de BSA.

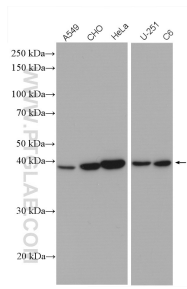
For technical support and original validation data for this product please contact:

T: 1 (888) 4PTGLAB (1-888-478-4522) (toll free in USA), or 1(312) 455-8498 (outside USA)

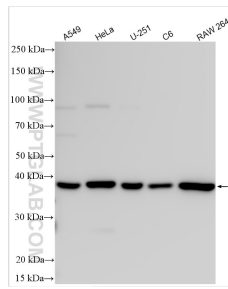
E: proteintech@ptglab.com
W: ptglab.com

This product is exclusively available under Proteintech Group brand and is not available to purchase from any other manufacturer.

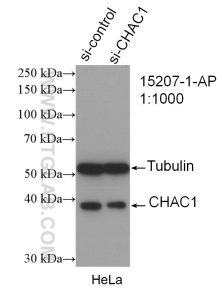
Données de validation sélectionnées



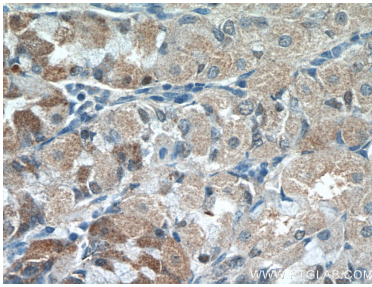
Various lysates were subjected to SDS PAGE followed by western blot with 15207-1-AP (CHAC1 antibody) at dilution of 1:600 incubated at room temperature for 1.5 hours.



Various lysates were subjected to SDS PAGE followed by western blot with 15207-1-AP (CHAC1 antibody) at dilution of 1:1000 incubated at room temperature for 1.5 hours.



WB result of CHAC1 antibody (15207-1-AP; 1:1000; incubated at room temperature for 1.5 hours) with sh-Control and sh-CHAC1 transfected HeLa cells.



Immunohistochemical analysis of paraffin-embedded human stomach tissue slide using 15207-1-AP (CHAC1 antibody) at dilution of 1:200 (under 10x lens).