

À des fins de recherche uniquement

Anticorps Polyclonal de lapin anti-OGDH



Numéro de catalogue: 15212-1-AP

Phare

49 Publications

Informations de base

Numéro de catalogue: 15212-1-AP	Numéro d'acquisition GenBank: BC004964	Méthode de purification: Purification par affinité contre l'antigène
Taille: 150ul, Concentration: 400 µg/ml by Nanodrop;	Identification du gène (NCBI): 4967	Dilutions recommandées: WB 1:5000-1:10000 IHC 1:50-1:500 IF 1:50-1:500
Hôte: Lapin	Nom complet: oxoglutarate (alpha-ketoglutarate) dehydrogenase (lipoamide)	
Isotype: IgG	MW calculé: 116 kDa	
Immunogen Catalog Number: AG7368	MW observés: 116 kDa	

Applications

Applications testées:

IF, IHC, WB, ELISA

Demandes citées:

IF, IHC, IP, WB

Spécificité de l'espèce:

Humain, rat, souris

Espèces citées:

Humain, Lapin, poulet, rat, souris

Remarque-IHC: il est suggéré de démasquer l'antigène avec un tampon de TE buffer pH 9,0; (*) À défaut, le démasquage de l'antigène peut être effectué avec un tampon citrate pH 6,0.

Contrôles positifs:

WB : tissu cardiaque de souris, cellules A549, cellules ROS1728, tissu cardiaque de rat, tissu hépatique de souris, tissu pancréatique de souris, tissu pulmonaire de souris

IHC : tissu de cancer du poumon humain,

IF : cellules HeLa,

Informations générales

OGDH(2-oxoglutarate dehydrogenase, mitochondrial) is also named as OGDC-E1 and belongs to the alpha-ketoglutarate dehydrogenase family. It is one of the three enzymatic components of 2-oxoglutarate dehydrogenase complex, which catalyzes the overall conversion of 2-oxoglutarate to succinyl-CoA and CO₂. This protein has 3 isoforms produced by alternative splicing. This antibody is immunized with the C-terminal and can recognize the isoform 1 and 2 with the MW of 116 kDa.

Publications notables

Autrice	Pubmed ID	Journal	Application
Mengyuan Li	34558014	Viol Sin	WB
Teresa W-M Fan	36150727	J Immunol	
Lifang Li	36230229	Animals (Basel)	WB

Stockage

Stockage:

Stocker à -20°C. Stable pendant un an après l'expédition.

Tampon de stockage:

PBS avec azoture de sodium à 0,02 % et glycérol à 50 % pH 7,3

L'aliquotage n'est pas nécessaire pour le stockage à -20C

*** Les 20ul contiennent 0,1% de BSA.

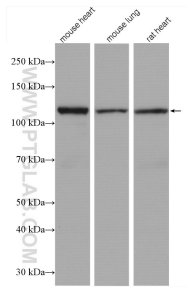
For technical support and original validation data for this product please contact:

T: 1 (888) 4PTGLAB (1-888-478-4522) (toll free in USA), or 1(312) 455-8498 (outside USA)

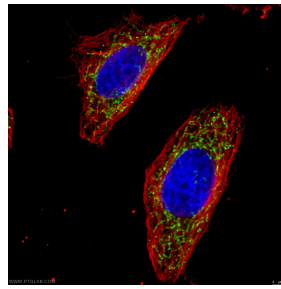
E: proteintech@ptglab.com
W: ptglab.com

This product is exclusively available under Proteintech Group brand and is not available to purchase from any other manufacturer.

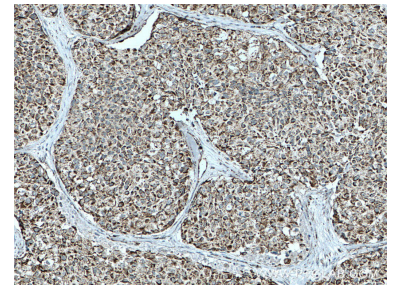
Données de validation sélectionnées



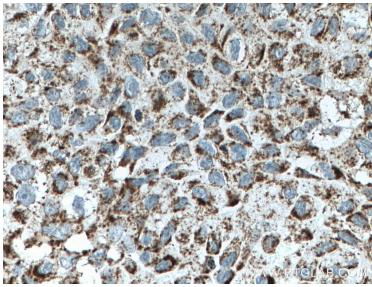
Various lysates were subjected to SDS PAGE followed by western blot with 15212-1-AP (OGDH antibody) at dilution of 1:8000 incubated at room temperature for 1.5 hours.



Immunofluorescent analysis of (4% PFA) fixed HeLa cells stained for OGDH rabbit pAb (15212-1-AP) at dilution of 1:50 and alpha Tubulin mouse mAb (66031-1-Ig) at dilution of 1:100, further stained with Alexa Fluor 488-conjugated AffiniPure Goat Anti-Rabbit IgG(H+L) for 15212-1-AP, and Alexa Fluor 594-conjugated AffiniPure Goat Anti-mouse IgG (H+L) for 66031-1-Ig. .



Immunohistochemical analysis of paraffin-embedded human lung cancer tissue slide using 15212-1-AP (OGDH antibody) at dilution of 1:200 (under 10x lens. Heat mediated antigen retrieval with Tris-EDTA buffer (pH 9.0).



Immunohistochemical analysis of paraffin-embedded human lung cancer tissue slide using 15212-1-AP (OGDH antibody) at dilution of 1:200 (under 40x lens. Heat mediated antigen retrieval with Tris-EDTA buffer (pH 9.0).